

Anti-Annexin A1 (ANXA1) Mouse Monoclonal Antibody [Clone ID: OTI3A8]

Catalog Number: M01451-2

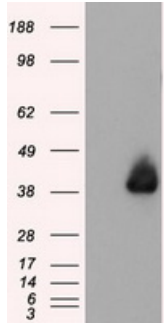
Overview

Product Name	Anti-Annexin A1 (ANXA1) Mouse Monoclonal Antibody [Clone ID: OTI3A8]
Reactive Species	Human, Mouse, Rat
Description	Boster Bio Anti-ANXA1 (Annexin A1) mouse monoclonal antibody, clone OTI3A8 (formerly 3A8). Catalog# M01451-2. Tested in IF, IHC, WB. This antibody reacts with Human, Mouse, Rat.
Application	IF, IHC, WB
Clonality	Monoclonal OTI3A8
Formulation	PBS (pH 7.3) containing 1% stabilizing protein, 50% glycerol and 0.02% sodium azide. This antibody is supplied in a stabilized formulation. Compatibility with conjugation reactions depends on the chemistry of the conjugation method used. For conjugation methods that are not compatible with the stabilizing components present in this formulation, a carrier-free antibody format is required.
Storage Instructions	Store at -20°C as received.
Host	Mouse
Uniprot ID	P04083

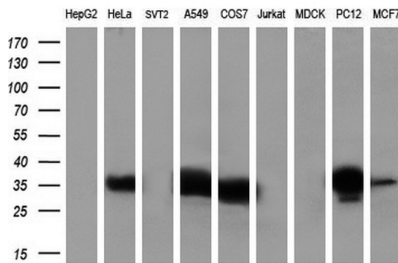
Technical Details

Immunogen	Full length human recombinant protein of human ANXA1 (NP_000691) produced in HEK293T cell.
Isotype	IgG1
Concentration	0.9 mg/ml
Purification	Purified from mouse ascites fluids or tissue culture supernatant by affinity chromatography (protein A/G)
Suggested Dilutions	WB: 1:2000 IHC: 1:50 IF: 1:100

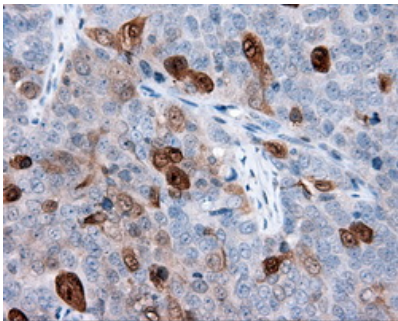
Anti-Annexin A1 (ANXA1) Mouse Monoclonal Antibody [Clone ID: OTI3A8] (M01451-2) Images



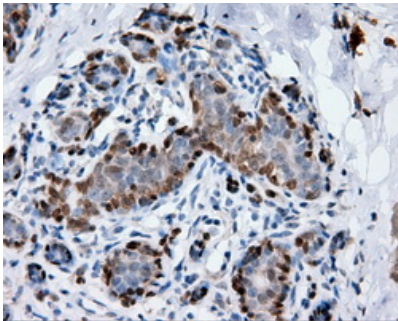
HEK293T cells were transfected with the pCMV6-ENTRY control (Left lane) or pCMV6-ENTRY ANXA1 (Right lane) cDNA for 48 hrs and lysed. Equivalent amounts of cell lysates (5 ug per lane) were separated by SDS-PAGE and immunoblotted with anti-ANXA1.



Western blot analysis of extracts (35ug) from 9 different cell lines by using anti-ANXA1 monoclonal antibody at 1:200 dilution. (HepG2: human; HeLa: human; SVT2: mouse; A549: human; COS7: monkey; Jurkat: human; MDCK: canine; PC12: rat; MCF7: human)

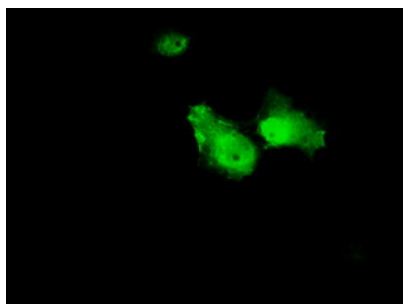
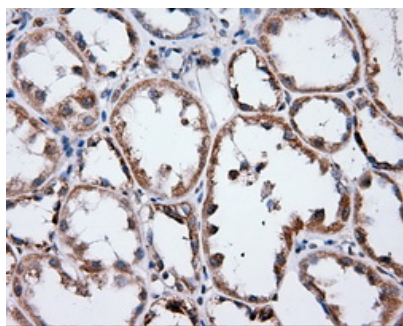


Immunohistochemical staining of paraffin-embedded Adenocarcinoma of ovary tissue using anti-ANXA1 mouse monoclonal antibody. (Heat-induced epitope retrieval by 10mM citric buffer)



Immunohistochemical staining of paraffin-embedded breast tissue within the normal limits using anti-ANXA1 mouse monoclonal antibody. (Heat-induced epitope retrieval by 10mM citric buffer)

Immunohistochemical staining of paraffin-embedded Kidney tissue within the normal limits using anti-ANXA1 mouse monoclonal antibody. (Heat-induced epitope retrieval by 10mM citric buffer)



Anti-ANXA1 mouse monoclonal antibody (M01451-2)
immunofluorescent staining of COS7 cells transiently
transfected by pCMV6-ENTRY ANXA1.

Submit a product review to [Biocompare.com](https://www.biocompare.com)

Submit a review of this product to [Biocompare.com](https://www.biocompare.com) to receive a \$20 Amazon.com giftcard! Your reviews help your fellow scientists make the right decisions. Thank you for your contribution.



Anti-Annexin A1 (ANXA1) Mouse Monoclonal Antibody [Clone ID: OT13A8]

For Research Use Only. Not for use in diagnostic procedures.