

Anti-p70 S6 Kinase RPS6KB1 Rabbit Monoclonal Antibody

Catalog Number: M01475

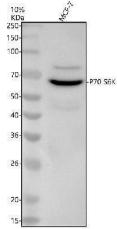
Overview

Product Name	Anti-p70 S6 Kinase RPS6KB1 Rabbit Monoclonal Antibody
Reactive Species	Human, Mouse, Rat
Description	Boster Bio Anti-p70 S6 Kinase RPS6KB1 Rabbit Monoclonal Antibody catalog # M01475. Tested in WB, IHC, ICC/IF, IP, Flow Cytometry applications. This antibody reacts with Human, Mouse, Rat.
Application	Flow Cytometry, IP, IF, IHC, ICC, WB
Clonality	Monoclonal CHB-18
Formulation	Rabbit IgG in stabilizing components, phosphate buffered saline, pH 7.4, 150mM NaCl, 0.02% sodium azide and 50% glycerol. *This antibody is supplied in a stabilized formulation. Compatibility with conjugation reactions depends on the chemistry of the conjugation method used. For conjugation methods that are not compatible with the stabilizing components present in this formulation, a carrier-free antibody format is required.
Storage Instructions	Store at -20°C for one year. For short term storage and frequent use, store at 4°C for up to one month. Avoid repeated freeze-thaw cycles.
Host	Rabbit
Uniprot ID	P23443

Technical Details

Immunogen	A synthesized peptide derived from human p70 S6 Kinase
Isotype	Rabbit IgG
Form	Liquid
Concentration	0.5mg/ml
Purification	Affinity-chromatography
Suggested Dilutions	WB 1:500-2000 IHC 1:50-200 ICC/IF 1:50-200 IP 1:50 FC 1:100

Anti-p70 S6 Kinase RPS6KB1 Rabbit Monoclonal Antibody (M01475) Images



Western blot analysis of p70 S6K/RPS6KB1 using anti-p70 S6K/RPS6KB1 antibody (M01475). Electrophoresis was performed on a 10% SDS-PAGE gel at 80V (Stacking gel) / 120V (Resolving gel) for 2 hours. The sample well of each lane was loaded with 30 ug of sample under reducing conditions. Lane 1: human MCF-7 whole cell lysates. After electrophoresis, proteins were transferred to a nitrocellulose membrane at 150 mA for 50-90 minutes. Blocked the membrane with 5% non-fat milk/TBS for 1.5 hour at RT. The membrane was incubated with rabbit anti-p70 S6K/RPS6KB1 antigen affinity purified monoclonal antibody (M01475) at 1:1000 overnight at 4°C, then washed with TBS-0.1% Tween 3 times with 5 minutes each and probed with a goat anti-rabbit IgG-HRP secondary antibody at a dilution of 1:5000 for 1.5 hour at RT. The signal is developed using an ECL Plus Western Blotting Substrate (Catalog # AR1196-200) with Tanon 5200 system. A specific band was detected for p70 S6K/RPS6KB1 at approximately 70 kDa. The expected band size for p70 S6K/RPS6KB1 is at 59 kDa.

1 Publications Citing This Product

1. PubMed ID: 33982772, Xu R, Zhang Y, Li A, Ma Y, Cai W, Song L, Xie Y, Zhou S, Cao W, Tang X. LY294002 enhances the chemosensitivity of liver cancer to oxaliplatin by blocking the PI3K/AKT/HIF1 α pathway. Mol Med Rep. 2021 Jul;24(1):508. doi:10.3892/mmr.2021.12147. Epub 2021 May 13. PMID: 33982772.

Visit bosterbio.com/anti-p70-s6-kinase-rabbit-monoclonal-antibody-m01475-boster.html to see all 1 publications.

Submit a product review to Biocompare.com

Submit a review of this product to Biocompare.com to receive a \$20 Amazon.com giftcard! Your reviews help your fellow scientists make the right decisions. Thank you for your contribution.



Anti-p70 S6 Kinase RPS6KB1 Rabbit Monoclonal Antibody

For Research Use Only. Not for use in diagnostic procedures.