

## Anti-S6K1 RPS6KB1 Rabbit Monoclonal Antibody

Catalog Number: M01475-1

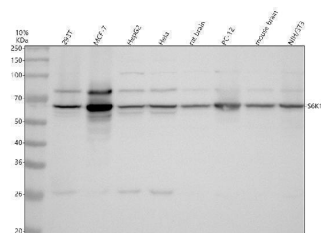
### Overview

|                      |  |
|----------------------|--|
| Product Name         | Anti-S6K1 RPS6KB1 Rabbit Monoclonal Antibody   |
| Reactive Species     | Human, Mouse, Rat  |
| Description          | Boster Bio Anti-S6K1 RPS6KB1 Rabbit Monoclonal Antibody catalog # M01475-1. Tested in WB, IHC, IP applications. This antibody reacts with Human, Mouse, Rat.   |
| Application          | IP, IHC, WB  |
| Clonality            | Monoclonal CDB-18  |
| Formulation          | Rabbit IgG in stabilizing components, phosphate buffered saline, pH 7.4, 150mM NaCl, 0.02% sodium azide and 50% glycerol.<br>*This antibody is supplied in a stabilized formulation.<br>Compatibility with conjugation reactions depends on the chemistry of the conjugation method used. For conjugation methods that are not compatible with the stabilizing components present in this formulation, a carrier-free antibody format is required. |
| Storage Instructions | Store at -20°C for one year. For short term storage and frequent use, store at 4°C for up to one month. Avoid repeated freeze-thaw cycles.   |
| Host                 | Rabbit   |
| Uniprot ID           | P23443   |

### Technical Details

|                     |   |
|---------------------|---|
| Immunogen           | A synthesized peptide derived from human S6K1 |
| Isotype             | Rabbit IgG                                    |
| Form                | Liquid  |
| Concentration       | 0.5mg/ml                                      |
| Purification        | Affinity-chromatography                       |
| Suggested Dilutions | WB 1:500-2000<br>IHC 1:50-200<br>IP 1:20      |

## Anti-S6K1 RPS6KB1 Rabbit Monoclonal Antibody (M01475-1) Images



Western blot analysis of p70 S6K/RPS6KB1 using anti-p70 S6K/RPS6KB1 antibody (M01475-1). Electrophoresis was performed on a 10% SDS-PAGE gel at 80V (Stacking gel) / 120V (Resolving gel) for 2 hours. The sample well of each lane was loaded with 30 ug of sample under reducing conditions. Lane 1: human 293T whole cell lysates, Lane 2: human MCF-7 whole cell lysates, Lane 3: human HepG2 whole cell lysates, Lane 4: human HeLa whole cell lysates, Lane 5: rat brain tissue lysates, Lane 6: rat PC-12 whole cell lysates, Lane 7: mouse brain tissue lysates, Lane 8: mouse NIH/3T3 whole cell lysates. After electrophoresis, proteins were transferred to a nitrocellulose membrane at 150 mA for 50-90 minutes. Blocked the membrane with 5% non-fat milk/TBS for 1.5 hour at RT. The membrane was incubated with rabbit anti-p70 S6K/RPS6KB1 antigen affinity purified monoclonal antibody (M01475-1) at 1:500 overnight at 4°C, then washed with TBS-0.1% Tween 3 times with 5 minutes each and probed with a goat anti-rabbit IgG-HRP secondary antibody at a dilution of 1:5000 for 1.5 hour at RT. The signal is developed using an ECL Plus Western Blotting Substrate (Catalog # AR1196-200) with Tanon 5200 system. A specific band was detected for p70 S6K/RPS6KB1 at approximately 59 kDa. The expected band size for p70 S6K/RPS6KB1 is at 59 kDa.

### Submit a product review to Biocompare.com

Submit a review of this product to Biocompare.com to receive a \$20 Amazon.com giftcard! Your reviews help your fellow scientists make the right decisions. Thank you for your contribution.



Anti-S6K1 RPS6KB1 Rabbit Monoclonal Antibody

For Research Use Only. Not for use in diagnostic procedures.