

Anti-S6K1 (RPS6KB1) Mouse Monoclonal Antibody [Clone ID: OTI6B2]

Catalog Number: M01475-3

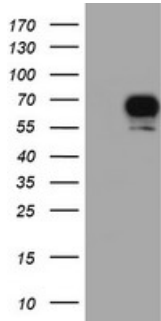
Overview

Product Name	Anti-S6K1 (RPS6KB1) Mouse Monoclonal Antibody [Clone ID: OTI6B2]
Reactive Species	Dog, Human, Monkey, Mouse, Rat
Description	Boster Bio RPS6KB1 (S6K) mouse monoclonal antibody, clone OTI6B2 (formerly 6B2). Catalog# M01475-3. Tested in IF, IHC, WB. This antibody reacts with Human, Monkey, Mouse, Rat, Dog.
Application	IF, IHC, WB
Clonality	Monoclonal OTI6B2
Formulation	PBS (pH 7.3) containing 1% stabilizing protein, 50% glycerol and 0.02% sodium azide. This antibody is supplied in a stabilized formulation. Compatibility with conjugation reactions depends on the chemistry of the conjugation method used. For conjugation methods that are not compatible with the stabilizing components present in this formulation, a carrier-free antibody format is required.
Storage Instructions	Store at -20°C as received.
Host	Mouse
Uniprot ID	P23443

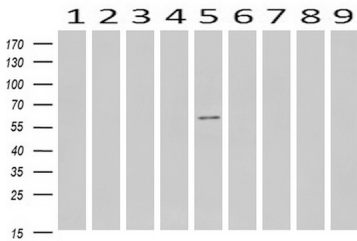
Technical Details

Immunogen	Full length human recombinant protein of human RPS6KB1 (NP_003152) produced in HEK293T cell.
Isotype	IgG1
Concentration	0.7 mg/ml
Purification	Purified from mouse ascites fluids or tissue culture supernatant by affinity chromatography (protein A/G)
Suggested Dilutions	WB 1:500~2000 IHC 1:150 IF 1:100

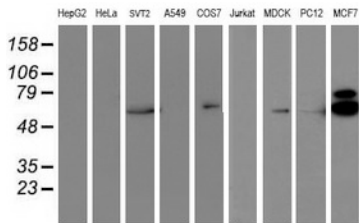
Anti-S6K1 (RPS6KB1) Mouse Monoclonal Antibody [Clone ID: OTI6B2] (M01475-3) Images



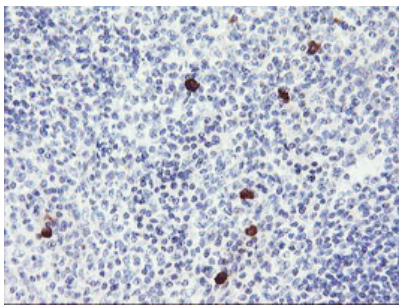
HEK293T cells were transfected with the pCMV6-ENTRY control (Left lane) or pCMV6-ENTRY RPS6KB1 (Right lane) cDNA for 48 hrs and lysed. Equivalent amounts of cell lysates (5 ug per lane) were separated by SDS-PAGE and immunoblotted with anti-RPS6KB1.



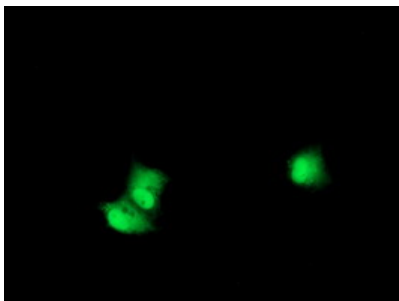
Western blot analysis of extracts (10ug) from 9 Human tissue by using anti-RPS6KB1 monoclonal antibody at 1:200 (1: Testis; 2: Omentum; 3: Uterus; 4: Breast; 5: Brain; 6: Liver; 7: Ovary; 8: Thyroid gland; 9: colon).



Western blot analysis of extracts (35ug) from 9 different cell lines by using anti-RPS6KB1 monoclonal antibody.



Immunohistochemical staining of paraffin-embedded Human tonsil within the normal limits using anti-RPS6KB1 mouse monoclonal antibody. (Heat-induced epitope retrieval by 10mM citric buffer)



Anti-RPS6KB1 mouse monoclonal antibody (M01475-3) immunofluorescent staining of COS7 cells transiently transfected by pCMV6-ENTRY RPS6KB1.

Submit a review of this product to Biocompare.com to receive a \$20 Amazon.com giftcard! Your reviews help your fellow scientists make the right decisions. Thank you for your contribution.



Anti-S6K1 (RPS6KB1) Mouse Monoclonal Antibody [Clone ID: OTI6B2]

For Research Use Only. Not for use in diagnostic procedures.