

Anti-P70 S6 Kinase alpha Rabbit Monoclonal Antibody

Catalog Number: M01475-4

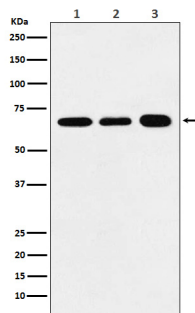
Overview

Product Name	Anti-P70 S6 Kinase alpha Rabbit Monoclonal Antibody
Reactive Species	Human, Mouse, Rat
Description	Boster Bio Anti-P70 S6 Kinase alpha Rabbit Monoclonal Antibody catalog # M01475-4. Tested in WB, IHC, ICC/IF, Flow Cytometry applications. This antibody reacts with Human, Mouse, Rat.
Application	Flow Cytometry, IF, IHC, ICC, WB
Clonality	Monoclonal 18R84
Formulation	Rabbit IgG in phosphate buffered saline, pH 7.4, 150mM NaCl, 0.02% sodium azide and 50% glycerol, 0.4-0.5mg/ml BSA.
Storage Instructions	Store at -20°C for one year. For short term storage and frequent use, store at 4°C for up to one month. Avoid repeated freeze-thaw cycles.
Host	Rabbit
Uniprot ID	P23443

Technical Details

Immunogen	A synthesized peptide derived from human P70 S6 Kinase alpha
Isotype	IgG
Form	Liquid
Concentration	Actual concentration vary by lot. Use suggested dilution ratio to decide dilution procedure.
Purification	Affinity-chromatography
Suggested Dilutions	WB 1:500-1:1000 IHC 1:50-1:200 ICC/IF 1:50-1:200 FC 1:200

Anti-P70 S6 Kinase alpha Rabbit Monoclonal Antibody (M01475-4) Images



Western blot analysis of P70 S6 Kinase alpha expression in (1) HeLa cell lysate; (2) Raw264.7 cell lysate; (3) PC12 cell lysate.

Submit a product review to Biocompare.com

Submit a review of this product to Biocompare.com to receive a \$20 Amazon.com giftcard! Your reviews help your fellow scientists make the right decisions. Thank you for your contribution.



Anti-P70 S6 Kinase alpha Rabbit Monoclonal Antibody