

## Anti-UBE2C Antibody (C-term)

Catalog Number: M01491

### About UBE2C

Accepts ubiquitin from the E1 complex and catalyzes its covalent attachment to other proteins. In vitro catalyzes 'Lys-11'- and 'Lys-48'-linked polyubiquitination. Acts as an essential factor of the anaphase promoting complex/cyclosome (APC/C), a cell cycle-regulated ubiquitin ligase that controls progression through mitosis. Acts by initiating 'Lys-11'-linked polyubiquitin chains on APC/C substrates, leading to the degradation of APC/C substrates by the proteasome and promoting mitotic exit.

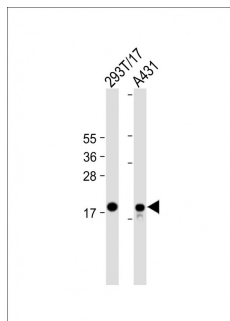
### Overview

Product Name	Anti-UBE2C Antibody (C-term)
Reactive Species	Human
Description	Boster Bio Anti-UBE2C Antibody (C-term) (Catalog # M01491). Tested in WB application(s). This antibody reacts with Human.
Application	WB
Clonality	Monoclonal 2001CT211.37.61
Formulation	Purified monoclonal antibody supplied in PBS with 0.09% (W/V) sodium azide.
Storage Instructions	Maintain refrigerated at 2-8°C for up to 2 weeks. For long-term storage, store at -20°C in small aliquots to prevent freeze-thaw cycles.
Host	Mouse
Uniprot ID	O00762

### Technical Details

Immunogen	This UBE2C antibody is generated from a mouse immunized with a KLH conjugated synthetic peptide between 137~172 amino acids from the C-terminal region of human UBE2C.
Predicted Reactive Species	Bovine, Monkey, Mouse
Isotype	IgG1,kappa
Purification	This antibody is purified through a protein G column, followed by dialysis against PBS.
Suggested Dilutions	WB: 1:2000

## Anti-UBE2C Antibody (C-term) (M01491) Images



All lanes : Anti-UBE2C Antibody (C-term) at 1:2000 dilution  
Lane 1: 293T/17 whole cell lysate  
Lane 2: A431 whole cell lysate  
Lysates/proteins at 20 µg per lane. Secondary Goat Anti-mouse IgG, (H+L), Peroxidase conjugated at 1/10000 dilution. Predicted band size : 20 kDa  
Blocking/Dilution buffer: 5% NFDM/TBST.

### Submit a product review to Biocompare.com

Submit a review of this product to Biocompare.com to receive a \$20 Amazon.com giftcard! Your reviews help your fellow scientists make the right decisions. Thank you for your contribution.



Anti-UBE2C Antibody (C-term)

For Research Use Only. Not for use in diagnostic procedures.