

## Anti-PSA (Prostate Specific Antigen) Rabbit Monoclonal Antibody, Clone#RM323

Catalog Number: M01505-2

### Overview

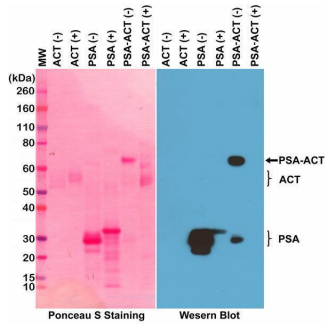
Product Name	Anti-PSA (Prostate Specific Antigen) Rabbit Monoclonal Antibody, Clone#RM323
Reactive Species	Human
Description	Boster Bio Anti-PSA (Prostate Specific Antigen) Rabbit Monoclonal Antibody, Clone#RM323 (Catalog # M01505-2). Tested in IHC, WB, ELISA applications. This antibody reacts with Human.
Application	ELISA, IHC, WB
Clonality	Monoclonal RM323
Formulation	50% Glycerol/PBS with 1% stabilizing protein and 0.09% sodium azide This antibody is supplied in a stabilized formulation. Compatibility with conjugation reactions depends on the chemistry of the conjugation method used. For conjugation methods that are not compatible with the stabilizing components present in this formulation, a carrier-free antibody format is required.
Storage Instructions	Store at -20°C for one year. Avoid repeated freeze-thaw cycles.
Host	Rabbit
Uniprot ID	P07288

### Technical Details

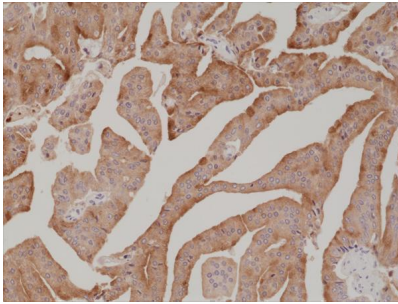
Immunogen	Native PSA protein purified from human seminal fluid.
Cross Reactivity	This antibody reacts to native human PSA (Prostate Specific Antigen), including both free (unbound) form and in a complex with ACT (alpha 1-antichymotrypsin). It may react to reduced PSA at a higher concentration.
Isotype	Rabbit IgG
Form	Liquid
Concentration	0.5-1mg/ml, actual concentration vary by lot. Use suggested dilution ratio to decide dilution procedure.
Purification	Protein A affinity purified from an animal origin-free culture supernatant
Suggested Dilutions	Immunohistochemistry (IHC): 1:500-1:1000 dilution WB (WB-Non-Reduced): 1:1000-1:2500 dilution ELISA: 1:100-1:5000 dilution



## Anti-PSA (Prostate Specific Antigen) Rabbit Monoclonal Antibody, Clone#RM323 (M01505-2) Images



Western Blotting result Western Blot of PSA (purified from human seminal fluid), ACT (alpha 1-antichymotrypsin, from human plasma), and PSA-ACT complex, under non-reduced (-) or reduced (+) conditions, using anti-PSA rabbit monoclonal antibody (Clone RM323) at a 1:2,500 dilution.



IHC result Immunohistochemical staining of formalin fixed and paraffin embedded human prostate cancer tissue section using anti-PSA rabbit monoclonal antibody (Clone RM323) at a 1:1,000 dilution.

### Submit a product review to Biocompare.com

Submit a review of this product to Biocompare.com to receive a \$20 Amazon.com giftcard! Your reviews help your fellow scientists make the right decisions. Thank you for your contribution.



Anti-PSA (Prostate Specific Antigen) Rabbit Monoclonal Antibody, Clone#RM323

For Research Use Only. Not for use in diagnostic procedures.