

Anti-Ephrin type-B receptor 2 EphB2 Monoclonal Antibody

Catalog Number: M01507

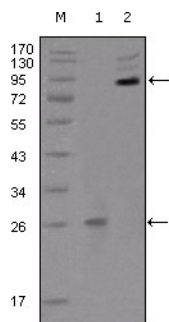
Overview

| | |
|----------------------|---|
| Product Name | Anti-Ephrin type-B receptor 2 EphB2 Monoclonal Antibody |
| Reactive Species | Human |
| Description | Boster Bio Anti-Ephrin type-B receptor 2 EphB2 Monoclonal Antibody catalog # M01507. Tested in ELISA, IF, WB applications. This antibody reacts with Human. |
| Application | ELISA, IF, WB |
| Clonality | Monoclonal 2D12C6 |
| Formulation | Ascitic fluid containing 0.03% sodium azide. |
| Storage Instructions | Store at -20°C for one year. For short term storage and frequent use, store at 4°C for up to one month. Avoid repeated freeze-thaw cycles. |
| Host | Mouse |
| Uniprot ID | P29323 |

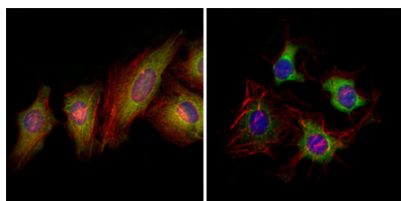
Technical Details

| | |
|---------------------|---|
| Immunogen | Purified recombinant fragment of EphB2 (aa17-200) expressed in E. Coli. |
| Cross Reactivity | No cross reactivity with other proteins. |
| Isotype | IgG |
| Form | Liquid |
| Concentration | 1 mg/ml |
| Purification | Affinity purification |
| Suggested Dilutions | WB 1:500-1:2000 IF 1:200-1:1000 ELISA 1:10000 |

Anti-Ephrin type-B receptor 2 EphB2 Monoclonal Antibody (M01507) Images



Western Blot analysis using EphB2 Monoclonal Antibody against truncated EphB2 recombinant protein (1) and extracellular EphB2 (aa19-476)-hlgGfc transfected CHO-K1 cell lysate (2).



Immunofluorescence analysis of HeLa (left) and HepG2 (right) cells using EphB2 Monoclonal Antibody (green). Red: Actin filaments have been labeled with DY-554 phalloidin. Blue: DRAQ5 fluorescent DNA dye.

Submit a product review to [Biocompare.com](https://www.biocompare.com)

Submit a review of this product to [Biocompare.com](https://www.biocompare.com) to receive a \$20 Amazon.com giftcard! Your reviews help your fellow scientists make the right decisions. Thank you for your contribution.



Anti-Ephrin type-B receptor 2 EphB2 Monoclonal Antibody

For Research Use Only. Not for use in diagnostic procedures.