

Anti-Siglec-3/CD33 Reference Antibody (Gemtuzumab)

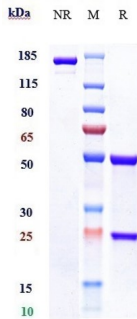
Catalog Number: M01508-3

Overview

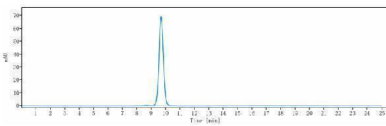
Product Name	Anti-Siglec-3/CD33 Reference Antibody (Gemtuzumab)
Reactive Species	Human
Description	Boster Bio Anti-Siglec-3/CD33 Reference Antibody (Gemtuzumab) (Catalog # M01508-3). Tested in Flow Cytometry, ELISA, FTA. This antibody reacts with Human. Endotoxin: < 0.010EU/ug,determined by LAL method. Expression system: CHO Cell
Application	ELISA, Flow Cytometry, Functional Assay, Kinetics
Clonality	Monoclonal
Storage Instructions	Maintain refrigerated at 2–8°C for up to 2 weeks. For long-term storage, aliquot and store at -20°C to avoid repeated freeze-thaw cycles.
Uniprot ID	P20138

Technical Details

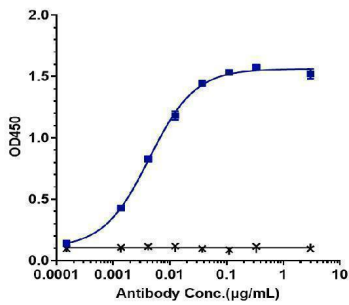
Anti-Siglec-3/CD33 Reference Antibody (Gemtuzumab) (M01508-3) Images



Anti-Siglec-3/CD33 Reference Antibody (Gemtuzumab) on SDS-PAGE under reducing (R) condition. The gel was stained with Coomassie Blue. The purity of the protein is greater than 95%



The purity of Anti-Siglec-3/CD33 Reference Antibody (Gemtuzumab) is more than 99.54%



Immobilized human CD33 His at 2 µg/mL can bind Anti-Siglec-3/CD33 Reference Antibody (Gemtuzumab)

Submit a product review to [Biocompare.com](https://www.biocompare.com)

Submit a review of this product to [Biocompare.com](https://www.biocompare.com) to receive a \$20 Amazon.com giftcard! Your reviews help your fellow scientists make the right decisions. Thank you for your contribution.



Anti-Siglec-3/CD33 Reference Antibody (Gemtuzumab)

For Research Use Only. Not for use in diagnostic procedures.