

Anti-LC3B MAP1LC3B Rabbit Monoclonal Antibody, Clone#RM293

Catalog Number: M01524-1

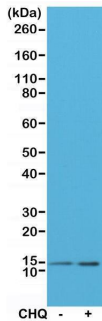
Overview

Product Name	Anti-LC3B MAP1LC3B Rabbit Monoclonal Antibody, Clone#RM293
Reactive Species	Human
Description	Boster Bio Anti-LC3B MAP1LC3B Rabbit Monoclonal Antibody, Clone#RM293 (Catalog # M01524-1). Tested in IHC, ICC, WB applications. This antibody reacts with Human.
Application	IHC, ICC, WB
Clonality	Monoclonal RM293
Formulation	50% Glycerol/PBS with 1% stabilizing protein and 0.09% sodium azide This antibody is supplied in a stabilized formulation. Compatibility with conjugation reactions depends on the chemistry of the conjugation method used. For conjugation methods that are not compatible with the stabilizing components present in this formulation, a carrier-free antibody format is required.
Storage Instructions	Store at -20°C for one year. Avoid repeated freeze-thaw cycles.
Host	Rabbit
Uniprot ID	Q9GZQ8

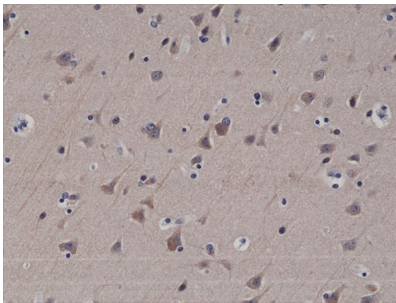
Technical Details

Immunogen	A peptide corresponding to the N-terminus of human LC3B.
Cross Reactivity	This antibody reacts to human LC3B (Autophagy-related protein LC3 B) (Microtubule-associated proteins 1A/1B light chain 3B). It may also react to mouse or rat LC3B, as predicted by immunogen homology.
Isotype	Rabbit IgG
Form	Liquid
Concentration	0.5-1mg/ml, actual concentration vary by lot. Use suggested dilution ratio to decide dilution procedure.
Purification	Protein A affinity purified from an animal origin-free culture supernatant
Suggested Dilutions	Immunohistochemistry (IHC): 1:100-1:200 dilution Immunocytochemistry (ICC): 1:100-1:200 dilution WB: 1:100-1:200 dilution.

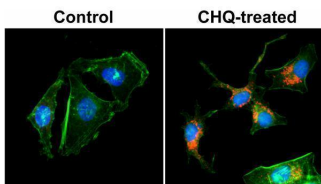
Anti-LC3B MAP1LC3B Rabbit Monoclonal Antibody, Clone#RM293 (M01524-1) Images



Western Blotting result Western Blot of cell lysates of HeLa untreated or treated with chloroquine (CHQ), using anti-LC3B rabbit monoclonal antibody (clone RM293) at a 1:200 dilution.



IHC result Immunohistochemical staining of formalin fixed and paraffin embedded human brain tissue sections using anti-LC3B rabbit monoclonal antibody (clone RM293) at a 1:200 dilution.



ICC result Immunocytochemical staining of HeLa cells untreated or treated with chloroquine (CHQ), using anti-LC3B rabbit monoclonal Antibody Clone RM293 (red) at a 1:200 dilution. Actin filaments have been labeled with fluorescein phalloidin (green), and nucleus labeled with DAPI (blue).

2 Publications Citing This Product

1. PubMed ID: 28031531, Overendocytosis of superparamagnetic iron oxide particles increases apoptosis and triggers autophagic cell death in human osteosarcoma cell under a spinning magnetic field

2. PubMed ID: 29066806, Dai L, Chen X, Lu X, Wang F, Zhan Y, Song G, Hu T, Xia C, Zhang B. Sci Rep. 2017 Oct 24;7(1):13912. doi: 10.1038/s41598-017-13334-y. Phosphoinositide-specific phospholipase Cgamma1 inhibition induces autophagy in human colon cancer and hepatocellular ...

Visit bosterbio.com/anti-lc3b-rabbit-monoclonal-antibody-clone-rm293-m01524-1-boster.html to see all 2 publications.

Submit a product review to Biocompare.com

Submit a review of this product to Biocompare.com to receive a \$20 Amazon.com giftcard! Your reviews help your fellow scientists make the right decisions. Thank you for your contribution.



Anti-LC3B MAP1LC3B Rabbit Monoclonal Antibody, Clone#RM293

For Research Use Only. Not for use in diagnostic procedures.