

Anti-BIN1/Amphiphysin Ii Monoclonal Antibody

Catalog Number: M01551

About BIN1

Bin1 is a conserved member of the BAR family of genes that have been implicated in diverse cellular processes including endocytosis, actin organization, programmed cell death, stress responses, and transcriptional control. The first mammalian BAR protein to be discovered, Amphiphysin I (AmphI), was identified in an immunoscreen for proteins associated with the plasma membranes of synaptic neurons, functions in the control of clathrin-dependent synaptic vesicle endocytosis. The mammalian Bin1 gene was first identified in a two hybrid screen for polypeptides that bind to the N-terminal Myc box 1 (MB1) portion of the c-Myc oncoprotein. Bin1 is similar to AmphI in overall structure, with an N-terminal BAR domain and a C-terminal SH3 domain. However, the Bin1 gene is more complex than the AmphI gene, encoding at least seven different splice variants that differ widely in subcellular localization, tissue distribution, and ascribed functions. Alternate splicing of the Bin1 gene results in ten transcript variants encoding different isoform. Bin1 is expressed ubiquitously in mammalian cells. Certain splice variants of Bin1 are expressed in the neurons, muscle cells or tumor cells. Bin1 may act as a cancer suppressor and inhibits malignant cell transformation. Studies in mouse suggest that this gene plays an important role in cardiac muscle development. Bin1 has also been implicated in Alzheimer disease and cardiac disease. Defects in Bin1 are the cause of centronuclear myopathy autosomal recessive; also known as autosomal recessive myotubular myopathy.

Overview

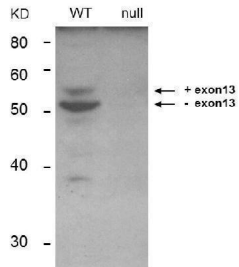
Product Name	Anti-BIN1/Amphiphysin Ii Monoclonal Antibody
Reactive Species	Human, Mouse
Description	Boster Bio Anti-BIN1/Amphiphysin Ii Monoclonal Antibody (Catalog # M01551). Tested in ELISA, WB applications. This antibody reacts with Human, Mouse.
Application	ELISA, Flow Cytometry, IP, IHC, WB
Clonality	Monoclonal Clone: 99D IgG2b
Formulation	0.02 M Potassium Phosphate, 0.15 M Sodium Chloride, pH 7.2, 0.01% (w/v) Sodium Azide
Storage Instructions	Store vial at -20°C prior to opening. Aliquot contents and freeze at -20°C or below for extended storage. Avoid cycles of freezing and thawing. Centrifuge product if not completely clear after standing at room temperature. This product is stable for several weeks at 4°C as an undiluted liquid. Dilute only prior to immediate use. Expiration date is one (1) year from date of opening. (Ship on dry ice.)
Host	Mouse
Uniprot ID	O00499

Technical Details

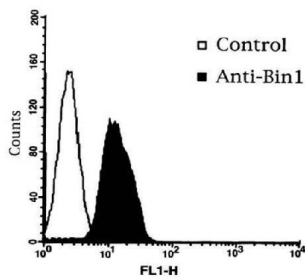
Immunogen	Anti-BIN1 (MOUSE) Monoclonal Antibody was produced in mouse by repeated immunizations with a fragment portion of recombinant human BIN1 protein followed by hybridoma development.
Predicted Reactive Species	Chimpanzee

Isotype	IgG2b
Form	Liquid (sterile filtered)
Concentration	1.0 mg/mL by UV absorbance at 280 nm
Purification	Anti-BIN1 was purified from clarified mouse ascetic fluid by Protein A chromatography followed by extensive dialysis against the buffer stated above. BIN1 antibody is specific for human BIN1 protein. A BLAST analysis was used to suggest cross-reactivity with BIN1 from human and mouse sources based on 100% homology with the immunizing sequence. Cross-reactivity with BIN1 from other sources has not been determined.
Suggested Dilutions	ELISA: 1:5000-1:50000 Flow Cytometry: 0.5-1x10 ⁶ cells IHC: 1:100-1:500 IP: 10-100 µL WB: 1:500-1:1500 Anti-BIN1 antibody has been tested for use in ELISA, IP, and Western Blot. This antibody is suitable for use in IHC and Flow Cytometry. Specific conditions for reactivity should be optimized by the end user.

Anti-BIN1/Amphiphysin II Monoclonal Antibody (M01551) Images



Western Blot of Anti-BIN1 Antibody. Lane 1: Keratinocyte derived from Bin1 wild type mice. Lane 2: Keratinocyte derived from Bin1 null mice. Load: 35 μ g per lane. Primary antibody: BIN1 monoclonal Antibody. Secondary antibody: IRDye800™ mouse secondary antibody at 1:10,000 for 45 min at RT. Block: 1xPBS, 0.4% Tween-20. Other band(s): non-specific.



Flow Cytometry of Mouse Anti-BIN1 Antibody. Cells: C2C12 cells. Stimulation: none. Primary antibody: Anti-IgD (control), Anti-BIN-1 Antibody (99D clone). Secondary antibody: Biotin mouse secondary antibody at 1:10,000 for 45 min at RT and streptavidin PE at 1:5,000 for 30 min at RT.

Submit a product review to [Biocompare.com](https://www.biocompare.com)

Submit a review of this product to [Biocompare.com](https://www.biocompare.com) to receive a \$20 Amazon.com giftcard! Your reviews help your fellow scientists make the right decisions. Thank you for your contribution.



Anti-BIN1/Amphiphysin II Monoclonal Antibody

For Research Use Only. Not for use in diagnostic procedures.