

Anti-BIN1 Monoclonal Antibody

Catalog Number: M01551-2

About BIN1

Bin1 is a conserved member of the BAR family of genes that have been implicated in diverse cellular processes including endocytosis, actin organization, programmed cell death, stress responses, and transcriptional control. The first mammalian BAR protein to be discovered, Amphiphysin I (AmphI), was identified in an immunoscreen for proteins associated with the plasma membranes of synaptic neurons, functions in the control of clathrin-dependent synaptic vesicle endocytosis. The mammalian Bin1 gene was first identified in a two hybrid screen for polypeptides that bind to the N-terminal Myc box 1 (MB1) portion of the c-Myc oncoprotein. Bin1 is similar to AmphI in overall structure, with an N-terminal BAR domain and a C-terminal SH3 domain. However, the Bin1 gene is more complex than the AmphI gene, encoding at least seven different splice variants that differ widely in subcellular localization, tissue distribution, and ascribed functions. Alternate splicing of the Bin1 gene results in ten transcript variants encoding different isoform. Bin1 is expressed ubiquitously in mammalian cells. Certain splice variants of Bin1 are expressed in the neurons, muscle cells or tumor cells and play a role in cancer suppression. Studies in muscle cells suggest that Bin1 expression, structure, and localization are tightly regulated during muscle differentiation and suggested that Bin1 plays a functional role in the differentiation process. Defects in BIN1 are the cause of centronuclear myopathy autosomal recessive; also known as autosomal recessive myotubular myopathy.

Overview

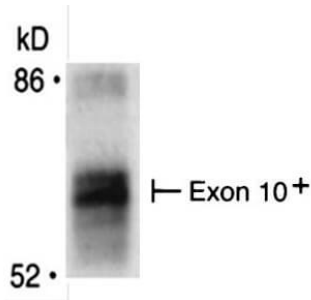
Product Name	Anti-BIN1 Monoclonal Antibody
Reactive Species	Human, Mouse
Description	Boster Bio Anti-BIN1 Monoclonal Antibody (Catalog # M01551-2). Tested in IF, WB applications. This antibody reacts with Human, Mouse.
Application	ELISA, IP, IF, WB
Clonality	Monoclonal Clone: 99F
Formulation	0.02 M Potassium Phosphate, 0.15 M Sodium Chloride, pH 7.2, 0.01% (w/v) Sodium Azide
Storage Instructions	Store vial at -20°C prior to opening. Aliquot contents and freeze at -20°C or below for extended storage. Avoid cycles of freezing and thawing. Centrifuge product if not completely clear after standing at room temperature. This product is stable for several weeks at 4°C as an undiluted liquid. Dilute only prior to immediate use. Expiration date is one (1) year from date of opening. (Ship on dry ice.)
Host	Mouse
Uniprot ID	O00499

Technical Details

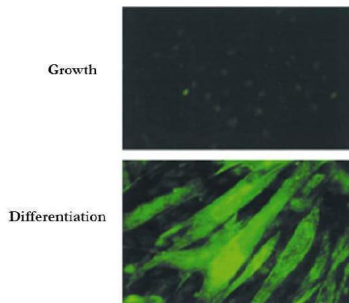
Immunogen	Anti-BIN1 (MOUSE) Monoclonal Antibody was produced in mouse by repeated immunizations with BIN1 polypeptide followed by hybridoma development.
Predicted Reactive Species	Chimpanzee, Hamster

Cross Reactivity	Detects ~85kDa.
Isotype	IgG
Form	Liquid (sterile filtered)
Concentration	1 mg/ml
Purification	Anti-BIN1 was purified from concentrated tissue culture supernate by Protein G chromatography followed by extensive dialysis against the buffer stated above. BIN1 antibody is specific for human BIN1 protein. A BLAST analysis was used to suggest cross-reactivity with BIN1 from human and mouse sources based on 100% homology with the immunizing sequence. Cross-reactivity with BIN1 from other sources has not been determined.
Suggested Dilutions	ELISA: 1:5000 - 1:50000 IF Microscopy: 1:100-1:500 IP: 10-100 μ L WB: 1:500-1:1500 Anti-BIN1 antibody has been tested for use in ELISA, Western Blot, IP, and IF. Specific conditions for reactivity should be optimized by the end user.

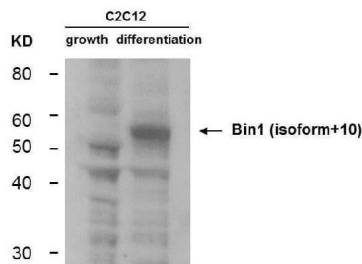
Anti-BIN1 Monoclonal Antibody (M01551-2) Images



Immunoprecipitation of Mouse anti-BIN1 antibody. Immunoprecipitates were separated by SDS-PAGE and visualized by fluorography. The differentiation-associated (Exon 10+) form of Bin1 is recognized by using Bin1 (Exon 10 specific, 99F) monoclonal antibody. Lane 1: BIN1 [35µg]. Primary antibody: Anti-BIN1 (Exon 10 specific, 99F) monoclonal antibody at 1:400 for overnight at 2-8°C. Secondary antibody: IRDye800™ mouse secondary antibody at 1:10,000 for 45 min at RT. Block: 5% BLOTTO overnight at 4°C. Predicted MW: 64.7 kDa. Observed MW: ~65 kDa for BIN-1.



Immunofluorescence Microscopy of Mouse Anti-BIN1 Antibody. Cells: C2C12 cells during growth or differentiation. Fixation: 0.5% PFA. Antigen retrieval: not required. Primary antibody: BIN-1 (Exon 10 specific, 99F) monoclonal antibody. Secondary antibody: mouse secondary antibody at 1:10,000 for 45 min at RT. Localization: BIN1 is nuclear and cytoplasmic. Staining: BIN 1 as green fluorescent signal.



Western Blot of Mouse Anti-BIN1 antibody. Lane 1: C2C12 during growth. Lane 2: C2C12 during differentiation. Load: 35 µg per lane. Primary antibody: BIN1 antibody at 1:400 for overnight at 4°C. Secondary antibody: IRDye800™ mouse secondary antibody at 1:10,000 for 45 min at RT. Block: 5% BLOTTO overnight at 4°C. Predicted/Observed size: 64.7 kDa, ~55 kDa for BIN-1. Other band(s): non-specifics.

Submit a product review to Biocompare.com

Submit a review of this product to Biocompare.com to receive a \$20 Amazon.com giftcard! Your reviews help your fellow scientists make the right decisions. Thank you for your contribution.



Anti-BIN1 Monoclonal Antibody

For Research Use Only. Not for use in diagnostic procedures.