

## Anti-Bim BCL2L11 Rabbit Monoclonal Antibody

Catalog Number: M01552

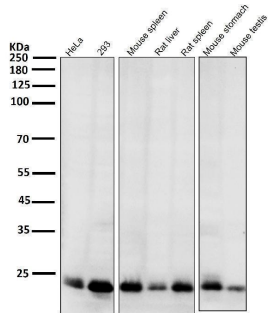
### Overview

Product Name	Anti-Bim BCL2L11 Rabbit Monoclonal Antibody
Reactive Species	Human, Mouse, Rat
Description	Boster Bio Anti-Bim BCL2L11 Rabbit Monoclonal Antibody catalog # M01552. Tested in WB, IHC, ICC/IF, IP, Flow Cytometry applications. This antibody reacts with Human, Mouse, Rat.
Application	Flow Cytometry, IP, IF, IHC, ICC, WB
Clonality	Monoclonal CBE-2
Formulation	Rabbit IgG in stabilizing components, phosphate buffered saline, pH 7.4, 150mM NaCl, 0.02% sodium azide and 50% glycerol. *This antibody is supplied in a stabilized formulation. Compatibility with conjugation reactions depends on the chemistry of the conjugation method used. For conjugation methods that are not compatible with the stabilizing components present in this formulation, a carrier-free antibody format is required.
Storage Instructions	Store at -20°C for one year. For short term storage and frequent use, store at 4°C for up to one month. Avoid repeated freeze-thaw cycles.
Host	Rabbit
Uniprot ID	O43521

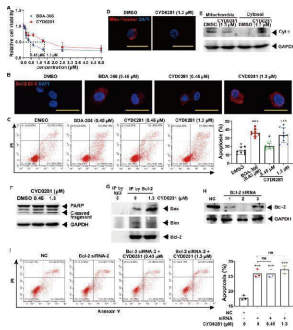
### Technical Details

Immunogen	A synthesized peptide derived from human Bim
Isotype	Rabbit IgG
Form	Liquid
Concentration	0.5mg/ml
Purification	Affinity-chromatography
Suggested Dilutions	WB 1:500-1:1000 IHC 1:50-1:100 ICC/IF 1:50-1:100 IP 1:40 FC 1:50

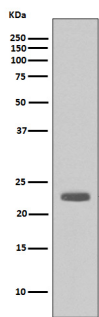
## Anti-Bim BCL2L11 Rabbit Monoclonal Antibody (M01552) Images



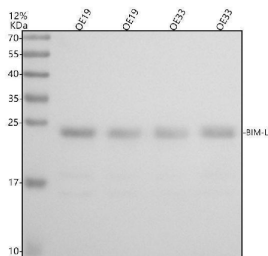
All lanes use the Antibody at 1:1W dilution for 1 hour at room temperature.



CYD0281 promotes HUVECs cell apoptosis by the exposure of the Bcl-2 BH3 domain. A Cell viability of HUVECs at 48 h. The exposure of the BH3 domain of Bcl-2 detected by immunofluorescence (IF) staining using anti-Bcl-2/BH3 domain antibody ( B ), and flow cytometry analysis of cell apoptosis ( C ) in HUVECs treated with BDA-366 and CYD0281 at the IC 50 concentration. HUVECs were treated with CYD0281 at the IC 50 concentration for 48 h, mitochondrial dysfunction was analyzed by Mito-Tracker Red CMXRos staining ( D ), Cyt c release ( E ) and PARP cleavage ( F ) were analyzed by western blotting assay, and Bcl-2 associated Bax or Bim was analyzed by co-IP using Bcl-2 antibody ( G ). H The expression of Bcl-2 in HUVECs was inhibited using siRNAs ( 1, 2, and 3 ) and analyzed by western blotting assay. I Flow cytometry analysis of cell apoptosis in Bcl-2-silenced HUVECs that were treated with CYD0281 ( n = 3 ). Significant effect compared to the DMSO group: \* P

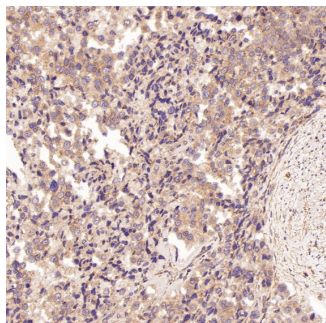


Western blot analysis of Bim expression in A431 cell lysate.

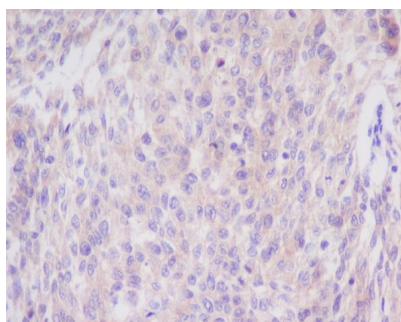


Western blot analysis of Bim using anti-Bim antibody (M01552). Electrophoresis was performed on a 12% SDS-PAGE gel at 80V (Stacking gel) / 120V (Resolving gel) for 2 hours. The sample well of each lane was loaded with 30 ug of sample under reducing conditions. Lane 1: huamn OE19 whole cell lysates, Lane 2: human OE19 whole cell lysates, Lane 3: human OE33 whole cell lysates, Lane 4: human OE33 whole cell lysates. After electrophoresis, proteins were transferred to a nitrocellulose membrane at 150 mA for 50-90 minutes. Blocked the membrane with 5% non-fat milk/TBS for 1.5 hour at RT. The membrane was incubated with rabbit anti-Bim antigen affinity purified monoclonal

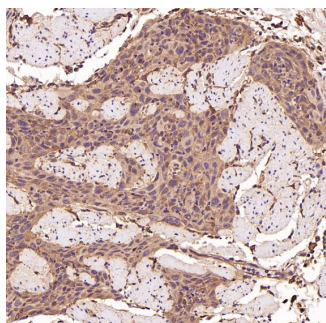
antibody (M01552) at 0.5 ug/mL overnight at 4°C, then washed with TBS-0.1%Tween-20 3 times with 5 minutes each and probed with a goat anti-rabbit IgG-HRP secondary antibody (Catalog # BA1054) at a dilution of 1:5000 for 1.5 hour at RT. The signal is developed using an ECL Plus Western Blotting Substrate (Catalog # AR1196-200) with Tanon 5200 system. A specific band was detected for Bim-L at approximately ~22 kDa. The expected band size for Bim is at ~22 kDa.



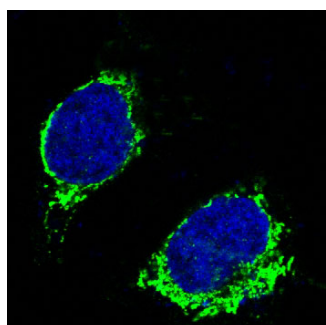
Immunohistochemical analysis of paraffin-embedded Human prostate cancer, using the Antibody at 1:50 dilution.



Immunohistochemical analysis of paraffin-embedded human cervix cancer, using Bim Antibody.

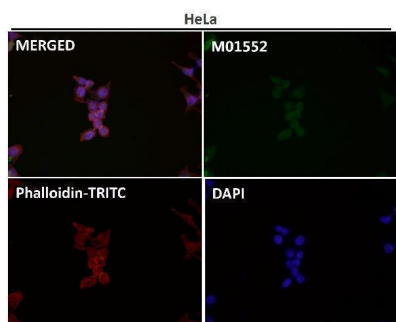


Immunohistochemical analysis of paraffin-embedded Human esophageal carcinoma, using the Antibody at 1:50 dilution.



Immunofluorescent analysis of Raji cells, using Bim Antibody.

Immunofluorescent analysis using the Antibody at 1:150



dilution.

## Submit a product review to Biocompare.com

Submit a review of this product to Biocompare.com to receive a \$20 Amazon.com giftcard! Your reviews help your fellow scientists make the right decisions. Thank you for your contribution.



Anti-Bim BCL2L11 Rabbit Monoclonal Antibody

For Research Use Only. Not for use in diagnostic procedures.