

Anti-Integrin alpha V ITGAV Rabbit Monoclonal Antibody

Catalog Number: M01561-1

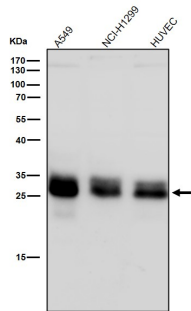
Overview

Product Name	Anti-Integrin alpha V ITGAV Rabbit Monoclonal Antibody
Reactive Species	Human, Mouse, Rat
Description	Boster Bio Anti-Integrin alpha V ITGAV Rabbit Monoclonal Antibody catalog # M01561-1. Tested in WB, IHC, ICC/IF, Flow Cytometry applications. This antibody reacts with Human, Mouse, Rat.
Application	Flow Cytometry, IF, IHC, ICC, WB
Clonality	Monoclonal CCE-9
Formulation	Rabbit IgG in stabilizing components, phosphate buffered saline, pH 7.4, 150mM NaCl, 0.02% sodium azide and 50% glycerol. *This antibody is supplied in a stabilized formulation. Compatibility with conjugation reactions depends on the chemistry of the conjugation method used. For conjugation methods that are not compatible with the stabilizing components present in this formulation, a carrier-free antibody format is required.
Storage Instructions	Store at -20°C for one year. For short term storage and frequent use, store at 4°C for up to one month. Avoid repeated freeze-thaw cycles.
Host	Rabbit
Uniprot ID	P06756

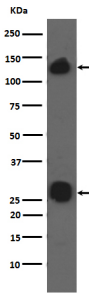
Technical Details

Immunogen	A synthesized peptide derived from human Integrin alpha V
Isotype	Rabbit IgG
Form	Liquid
Concentration	0.5mg/ml
Purification	Affinity-chromatography
Suggested Dilutions	WB 1:1000-1:2000 IHC 1:100-1:200 ICC/IF 1:50-1:200 FC 1:20-1:100

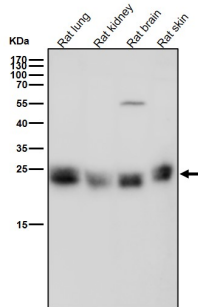
Anti-Integrin alpha V ITGAV Rabbit Monoclonal Antibody (M01561-1) Images



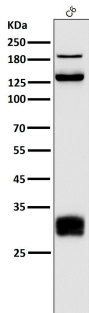
All lanes use the Antibody at 1:2000 dilution for 1 hour at room temperature.



Western blot analysis of integrin alpha V expression in A549 cell lysates.

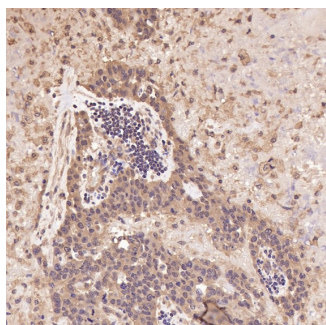
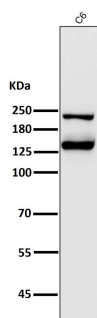


All lanes use the Antibody at 1:2000 dilution for 1 hour at room temperature.

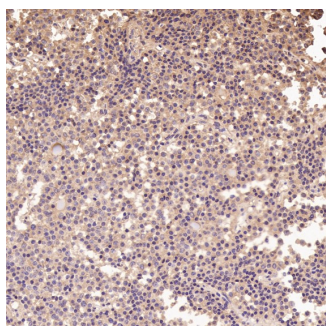


All lanes use the Antibody at 1:2000 dilution for 1 hour at room temperature.

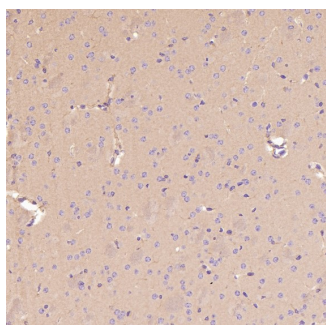
All lanes use the Antibody at 1:2000 dilution for 1 hour at room temperature.



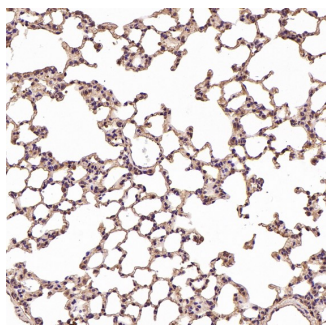
Immunohistochemical analysis of paraffin-embedded Human ovarian cancer, using the Antibody at 1:100 dilution.



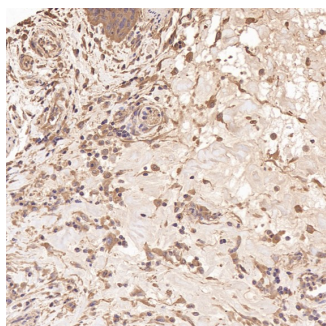
Immunohistochemical analysis of paraffin-embedded Human pituitary tumor, using the Antibody at 1:100 dilution.



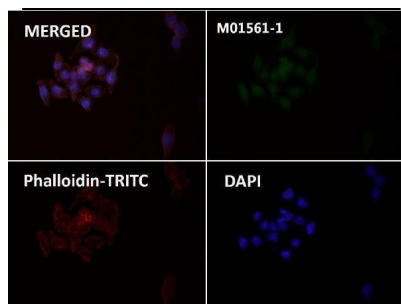
Immunohistochemical analysis of paraffin-embedded Mouse cerebral cortex, using the Antibody at 1:200 dilution.



Immunohistochemical analysis of paraffin-embedded Rat liver, using the Antibody at 1:200 dilution.



Immunohistochemical analysis of paraffin-embedded Human esophageal carcinoma, using the Antibody at 1:100 dilution.



Immunofluorescent analysis using the Antibody at 1:50 dilution.

4 Publications Citing This Product

1. PubMed ID: 25666351, Chen Q, Zhang Z, Liu J, He Q, Zhou Y, Shao G, Sun X, Cao X, Gong A, Jiang P. Mol Cells. 2015 Mar;38(3):221-8. Doi: 10.14348/Molcells.2015.2170. Epub 2015 Feb 4. A Fibrin Matrix Promotes The Differentiation Of Emcs Isolated From Nasal Respiratory ...
2. PubMed ID: 29312560, Xuan J, Chen Y, Zhu L, Guo Y, Deng L, Zheng Y, Wang Z, Wang Z, Ao M. Oncotarget. 2017 Sep 28;8(65):108676-108691. doi: 10.18632/oncotarget.21358. eCollection 2017 Dec 12. Ultrasound molecular imaging with cRGD-PLGA-PFOB nanoparticles for liver fib...
3. PubMed ID: 21747684, Study on the Expression and Clinical Significances of Lewis y Antigen and Integrin $\alpha_v\beta_3$ in Epithelial Ovarian Tumors

Visit bosterbio.com/anti-integrin-alpha-v-rabbit-monoclonal-antibody-m01561-1-boster.html to see all 4 publications.

Submit a product review to Biocompare.com

Submit a review of this product to Biocompare.com to receive a \$20 Amazon.com giftcard! Your reviews help your fellow scientists make the right decisions. Thank you for your contribution.



Anti-Integrin alpha V ITGAV Rabbit Monoclonal Antibody

For Research Use Only. Not for use in diagnostic procedures.