

## Anti-BubR1 (BUB1B) Mouse Monoclonal Antibody [Clone ID: OTI6E3]

Catalog Number: M01564

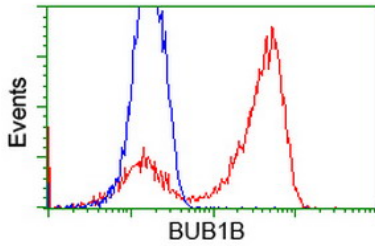
### Overview

Product Name	Anti-BubR1 (BUB1B) Mouse Monoclonal Antibody [Clone ID: OTI6E3]
Reactive Species	Dog, Human, Monkey, Rat
Description	Boster Bio BuB1B (BubR1) mouse monoclonal antibody, clone OTI6E3 (formerly 6E3). Catalog# M01564. Tested in FC, IF, WB. This antibody reacts with Human, Monkey, Rat, Dog.
Conjugate	Unconjugated
Application	Flow Cytometry, IF, WB
Clonality	Monoclonal OTI6E3
Formulation	PBS (pH 7.3) containing 1% stabilizing protein, 50% glycerol and 0.02% sodium azide. This antibody is supplied in a stabilized formulation. Compatibility with conjugation reactions depends on the chemistry of the conjugation method used. For conjugation methods that are not compatible with the stabilizing components present in this formulation, a carrier-free antibody format is required.
Storage Instructions	Store at -20°C as received.
Host	Mouse
Uniprot ID	O60566

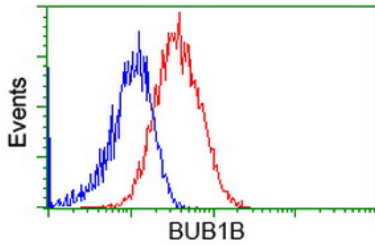
### Technical Details

Immunogen	Full length human recombinant protein of human BUB1B (NP_001202) produced in HEK293T cell.
Isotype	IgG1
Concentration	1 mg/ml
Purification	Purified from mouse ascites fluids or tissue culture supernatant by affinity chromatography (protein A/G)
Suggested Dilutions	WB 1:500~2000 IF 1:100 Flow Cytometry 1:100

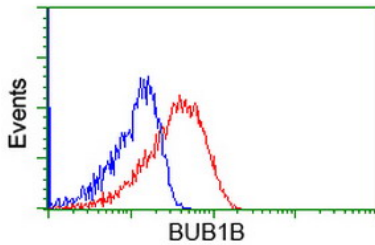
## Anti-BubR1 (BUB1B) Mouse Monoclonal Antibody [Clone ID: OTI6E3] (M01564) Images



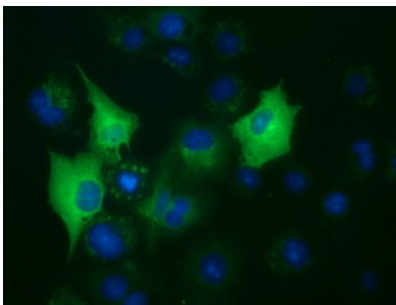
HEK293T cells transfected with either BUB1B (Myc-DDK-tagged) overexpress plasmid (Red) or empty vector control plasmid (Blue) were immunostained by anti-BUB1B antibody (M01564)



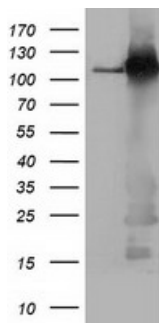
Flow cytometric Analysis of HeLa cells



Flow cytometric Analysis of Jurkat cells



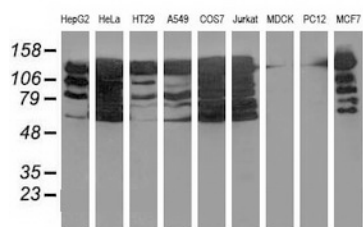
Anti-BUB1B mouse monoclonal antibody (M01564) immunofluorescent staining of COS7 cells transiently transfected by pCMV6-ENTRY BUB1B.



HEK293T cells were transfected with the pCMV6-ENTRY control (Left lane) or pCMV6-ENTRY BUB1B (Right lane) cDNA for 48 hrs and lysed. Equivalent amounts of cell lysates (5 ug per lane) were separated by SDS-PAGE and immunoblotted with anti-BUB1B.

Western blot analysis of extracts (35ug) from 9 different cell

lines by using anti-BUB1B monoclonal antibody.



## Submit a product review to Biocompare.com

Submit a review of this product to Biocompare.com to receive a \$20 Amazon.com giftcard! Your reviews help your fellow scientists make the right decisions. Thank you for your contribution.



Anti-BubR1 (BUB1B) Mouse Monoclonal Antibody [Clone ID: OTI6E3]

For Research Use Only. Not for use in diagnostic procedures.