

Anti-N Cadherin (CDH2) Mouse Monoclonal Antibody [Clone ID: OTI2G7]

Catalog Number: M01577-3

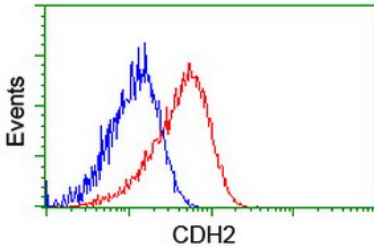
Overview

Product Name	Anti-N Cadherin (CDH2) Mouse Monoclonal Antibody [Clone ID: OTI2G7]
Reactive Species	Dog, Human, Monkey, Mouse, Rat
Description	Boster Bio CDH2 (N Cadherin) mouse monoclonal antibody, clone OTI2G7 (formerly 2G7). Catalog# M01577-3. Tested in FC, IHC, WB. This antibody reacts with Human, Monkey, Mouse, Rat, Dog.
Conjugate	Unconjugated
Application	Flow Cytometry, IHC, WB
Clonality	Monoclonal OTI2G7
Formulation	PBS (pH 7.3) containing 1% stabilizing protein, 50% glycerol and 0.02% sodium azide. This antibody is supplied in a stabilized formulation. Compatibility with conjugation reactions depends on the chemistry of the conjugation method used. For conjugation methods that are not compatible with the stabilizing components present in this formulation, a carrier-free antibody format is required.
Storage Instructions	Store at -20°C for one year. For short term storage and frequent use, store at 4°C for up to one month. Avoid repeated freeze-thaw cycles.
Host	Mouse
Uniprot ID	P19022

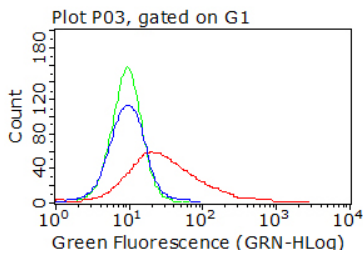
Technical Details

Immunogen	Full length human recombinant protein of human CDH2 (NP_001783) produced in HEK293T cell.
Isotype	IgG2a
Concentration	0.77 mg/ml
Purification	Purified from mouse ascites fluids or tissue culture supernatant by affinity chromatography (protein A/G)
Suggested Dilutions	WB 1:500~2000 IHC 1:150 Flow Cytometry 1:100

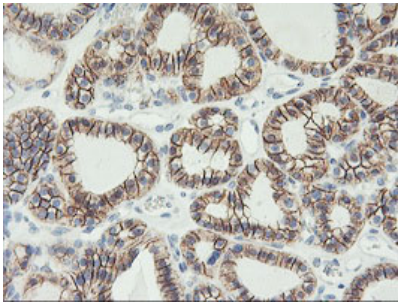
Anti-N Cadherin (CDH2) Mouse Monoclonal Antibody [Clone ID: OTI2G7] (M01577-3) Images



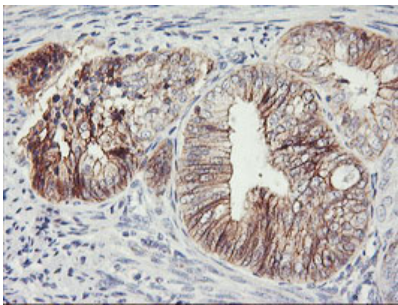
Flow cytometric Analysis of HeLa cells



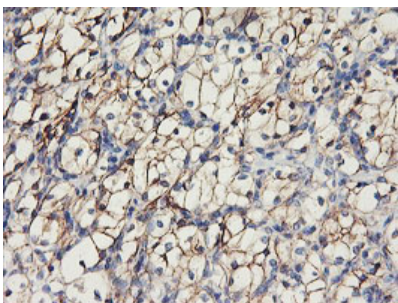
Living HEK293T cells transfected with either CDH2 (Myc-DDK-tagged) plasmid (red) or empty vector (blue) were immunostained by anti-CDH2 antibody (M01577-3) or isotype control antibody (green)



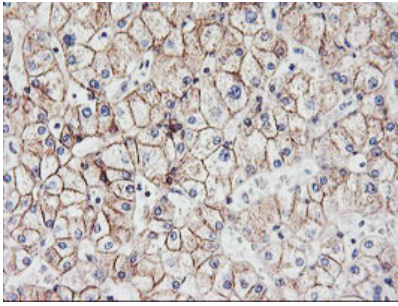
Immunohistochemical staining of paraffin-embedded Carcinoma of Human thyroid tissue using anti-CDH2 mouse monoclonal antibody. (Heat-induced epitope retrieval by 10mM citric buffer)



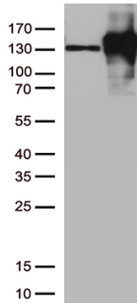
Immunohistochemical staining of paraffin-embedded Adenocarcinoma of Human endometrium tissue using anti-CDH2 mouse monoclonal antibody. (Heat-induced epitope retrieval by 10mM citric buffer)



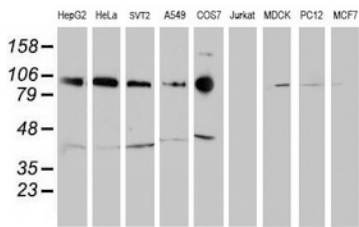
Immunohistochemical staining of paraffin-embedded Carcinoma of Human kidney tissue using anti-CDH2 mouse monoclonal antibody. (Heat-induced epitope retrieval by 10mM citric buffer)



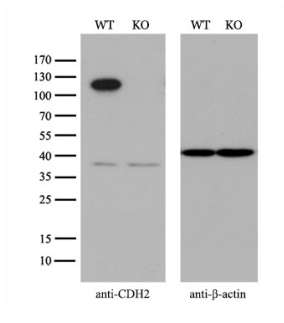
Immunohistochemical staining of paraffin-embedded Human liver tissue within the normal limits using anti-CDH2 mouse monoclonal antibody. (Heat-induced epitope retrieval by 10mM citric buffer)



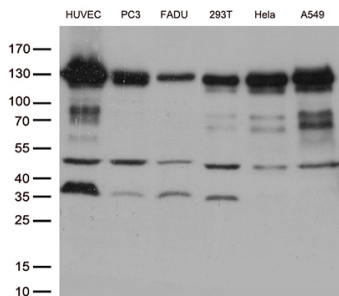
HEK293T cells were transfected with the pCMV6-ENTRY control (Left lane) or pCMV6-ENTRY CDH2 (Right lane) cDNA for 48 hrs and lysed. Equivalent amounts of cell lysates (5 ug per lane) were separated by SDS-PAGE and immunoblotted with anti-CDH2.



Western blot analysis of extracts (35ug) from 9 different cell lines by using anti-CDH2 monoclonal antibody.



Equivalent amounts of cell lysates (10 ug per lane) of wild-type 293T cells (WT) and CDH2-Knockout 293T cells (KO) were separated by SDS-PAGE and immunoblotted with anti-CDH2 monoclonal antibody M01577-3



Western blot analysis of extracts (35ug) from 6 cell lines by using anti-CDH2 monoclonal antibody (1:500).

Submit a review of this product to Biocompare.com to receive a \$20 Amazon.com giftcard! Your reviews help your fellow scientists make the right decisions. Thank you for your contribution.



Anti-N Cadherin (CDH2) Mouse Monoclonal Antibody [Clone ID: OTI2G7]

For Research Use Only. Not for use in diagnostic procedures.