

Anti-Claudin 1 CLDN1 Rabbit Monoclonal Antibody

Catalog Number: M01585

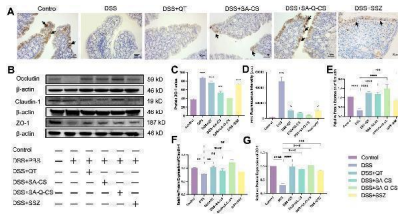
Overview

Product Name	Anti-Claudin 1 CLDN1 Rabbit Monoclonal Antibody
Reactive Species	Human, Mouse, Rat
Description	Boster Bio Anti-Claudin 1 CLDN1 Rabbit Monoclonal Antibody catalog # M01585. Tested in WB application. This antibody reacts with Human, Mouse, Rat.
Application	WB
Clonality	Monoclonal ABEH-3
Formulation	Rabbit IgG in stabilizing components, phosphate buffered saline, pH 7.4, 150mM NaCl, 0.02% sodium azide and 50% glycerol. *This antibody is supplied in a stabilized formulation. Compatibility with conjugation reactions depends on the chemistry of the conjugation method used. For conjugation methods that are not compatible with the stabilizing components present in this formulation, a carrier-free antibody format is required.
Storage Instructions	Store at -20°C for one year. For short term storage and frequent use, store at 4°C for up to one month. Avoid repeated freeze-thaw cycles.
Host	Rabbit
Uniprot ID	O95832

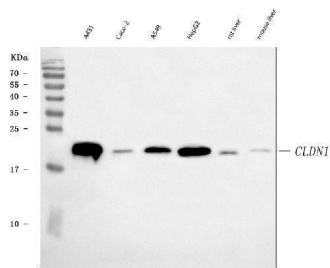
Technical Details

Immunogen	A synthesized peptide derived from human Claudin 1
Isotype	Rabbit IgG
Form	Liquid
Concentration	0.5mg/ml
Purification	Affinity-chromatography
Suggested Dilutions	WB 1:500-2000

Anti-Claudin 1 CLDN1 Rabbit Monoclonal Antibody (M01585) Images



Oral administration of SA-Q-CS MPs improves the levels of colonic tight-junction proteins. (A) IHC staining images of ZO-1 protein, black arrows indicate positive signal of ZO-1 protein (scale bar 100 um); (B) Protein bands of Occludin, Claudin-1 and ZO-1; (C) IOD was counted of ZO-1 by immunohistochemical staining; (D) FITC fluorescence intensity in blood of C57/BL6 mice in each FITC group; (E-G) Protein statistical analysis of proteins Occludin, Claudin-1, and ZO-1. Data was represented as mean \pm SD (* p



Western blot analysis of Claudin 1 using anti-Claudin 1 antibody (M01585). Electrophoresis was performed on a 5-20% SDS-PAGE gel at 70V (Stacking gel) / 90V (Resolving gel) for 2-3 hours. The sample well of each lane was loaded with 30 ug of sample under reducing conditions. Lane 1: human A431 whole cell lysates, Lane 2: human Caco-2 whole cell lysates, Lane 3: human A549 whole cell lysates, Lane 4: human HepG2 whole cell lysates, Lane 5: rat liver tissue lysates, Lane 6: mouse liver tissue lysates. After electrophoresis, proteins were transferred to a nitrocellulose membrane at 150 mA for 50-90 minutes. Blocked the membrane with 5% non-fat milk/TBS for 1.5 hour at RT. The membrane was incubated with mouse anti-Claudin 1 antigen affinity purified monoclonal antibody (Catalog # M01585) at 1:500 overnight at 4°C, then washed with TBS-0.1%Tween 3 times with 5 minutes each and probed with a goat anti-mouse IgG-HRP secondary antibody at a dilution of 1:10000 for 1.5 hour at RT. The signal is developed using an Enhanced Chemiluminescent detection (ECL) kit (Catalog # EK1002) with Tanon 5200 system. A specific band was detected for Claudin 1 at approximately 23 kDa. The expected band size for Claudin 1 is at 23 kDa.

2 Publications Citing This Product

1. PubMed ID: -, Xiaozhu Tian,Rong Li,Yiming Jiang,Fei Zhao,Zhengsheng Yu,Yiqing Wang,Zixing Dong,Pu Liu,Xiangkai Li,Bifidobacterium breve ATCC15700 pretreatment prevents alcoholic liver disease through modulating gut microbiota in mice exposed to chronic alcohol intake,J

2. PubMed ID: -, Xin-li Liang,Miao-miao Ji,Lai Chen,Ye Liao,Xiao-qiang Kong,Xi-qiang Xu,Zheng-gen Liao,Danny W. Wilson, Traditional Chinese herbal medicine Astragalus Radix and its effects on intestinal absorption of aconite alkaloids in rats, Chinese Herbal Medicines,202

Visit bosterbio.com/anti-claudin-1-rabbit-monoclonal-antibody-m01585-boster.html to see all 2 publications.

Submit a product review to Biocompare.com

Submit a review of this product to Biocompare.com to receive a \$20 Amazon.com giftcard! Your reviews help your fellow scientists make the right decisions. Thank you for your contribution.



Anti-Claudin 1 CLDN1 Rabbit Monoclonal Antibody

For Research Use Only. Not for use in diagnostic procedures.