

## Anti-Claudin 1 Rabbit Monoclonal Antibody

Catalog Number: M01585-2

### Overview

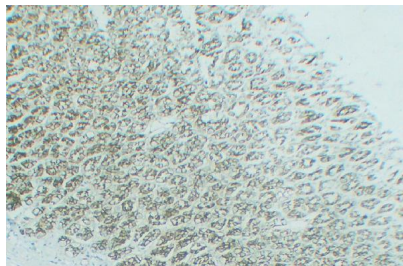
Product Name	Anti-Claudin 1 Rabbit Monoclonal Antibody
Reactive Species	Human, Mouse, Rat
Description	This Recombinant Rabbit Monoclonal Antibody detects endogenous levels of Claudin 1 (ABT184R) rabbit mAb protein. Validated for research with WB,IHC,ELISA applications. Anti Claudin 1 is reactive for Human, Mouse, Rat samples
Application	ELISA, IHC, WB
Clonality	Monoclonal
Formulation	PBS, 50% glycerol, 0.05% Proclin 300, 0.05% stabilizing protein This antibody is supplied in a stabilized formulation. Compatibility with conjugation reactions depends on the chemistry of the conjugation method used. For conjugation methods that are not compatible with the stabilizing components present in this formulation, a carrier-free antibody format is required.
Storage Instructions	Store at -20°C/1 year
Host	Rabbit
Uniprot ID	O95832

### Technical Details

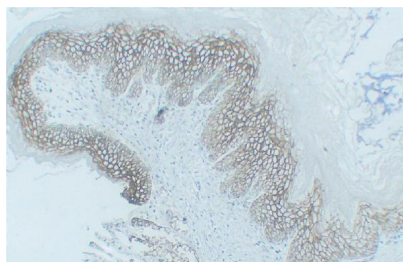
Isotype	IgG, Kappa
Purification	Protein A
Suggested Dilutions	WB 1:500-1:2000 ELISA 1:5000-1:20000

## Anti-Claudin 1 Rabbit Monoclonal Antibody (M01585-2) Images

---



Rat stomach tissue was stained with anti-Claudin 1 rabbit Antibody



Rat esophagus tissue was stained with anti-Claudin 1 rabbit Antibody

---

### Submit a product review to [Biocompare.com](https://www.biocompare.com)

Submit a review of this product to [Biocompare.com](https://www.biocompare.com) to receive a \$20 Amazon.com giftcard! Your reviews help your fellow scientists make the right decisions. Thank you for your contribution.



Anti-Claudin 1 Rabbit Monoclonal Antibody

For Research Use Only. Not for use in diagnostic procedures.