

## Anti-Cathepsin L/V/K/H Rabbit Monoclonal Antibody

Catalog Number: M01589

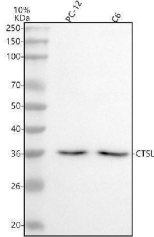
### Overview

Product Name	Anti-Cathepsin L/V/K/H Rabbit Monoclonal Antibody
Reactive Species	Human, Mouse, Rat
Description	Boster Bio Anti-Cathepsin L/V/K/H Rabbit Monoclonal Antibody catalog # M01589. Tested in WB, IHC, ICC/IF, Flow Cytometry applications. This antibody reacts with Human, Mouse, Rat.
Application	Flow Cytometry, IF, IHC, ICC, WB
Clonality	Monoclonal AACD-3
Formulation	Rabbit IgG in stabilizing components, phosphate buffered saline, pH 7.4, 150mM NaCl, 0.02% sodium azide and 50% glycerol. *This antibody is supplied in a stabilized formulation. Compatibility with conjugation reactions depends on the chemistry of the conjugation method used. For conjugation methods that are not compatible with the stabilizing components present in this formulation, a carrier-free antibody format is required.
Storage Instructions	Store at -20°C for one year. For short term storage and frequent use, store at 4°C for up to one month. Avoid repeated freeze-thaw cycles.
Host	Rabbit
Uniprot ID	P07711/O60911/P43235/P09668

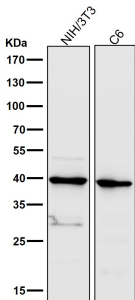
### Technical Details

Immunogen	A synthesized peptide derived from human Cathepsin L/V/K/H
Isotype	Rabbit IgG
Form	Liquid
Concentration	0.5mg/ml
Purification	Affinity-chromatography
Suggested Dilutions	WB 1:500-2000 IHC 1:50-200 ICC/IF 1:50-200 FC 1:50

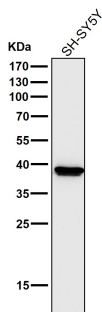
## Anti-Cathepsin L/V/K/H Rabbit Monoclonal Antibody (M01589) Images



Western blot analysis of Cathepsin L/V/K/H using anti-Cathepsin L/V/K/H antibody (M01589). Electrophoresis was performed on a 5-20% SDS-PAGE gel at 70V (Stacking gel) / 90V (Resolving gel) for 2-3 hours. The sample well of each lane was loaded with 30 ug of sample under reducing conditions. Lane 1: rat PC-12 whole cell lysates, Lane 2: rat C6 whole cell lysates. After electrophoresis, proteins were transferred to a nitrocellulose membrane at 150 mA for 50-90 minutes. Blocked the membrane with 5% non-fat milk/TBS for 1.5 hour at RT. The membrane was incubated with rabbit anti-Cathepsin L/V/K/H antigen affinity purified monoclonal antibody (Catalog # M01589) at 1:500 overnight at 4°C, then washed with TBS-0.1%Tween 3 times with 5 minutes each and probed with a goat anti-rabbit IgG-HRP secondary antibody at a dilution of 1:500 for 1.5 hour at RT. The signal is developed using an Enhanced Chemiluminescent detection (ECL) kit (Catalog # EK1002) with Tanon 5200 system. A specific band was detected for Cathepsin L/V/K/H at approximately 38 kDa. The expected band size for Cathepsin L/V/K/H is at 36,38 kDa.

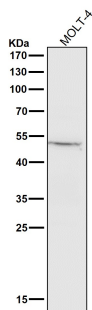
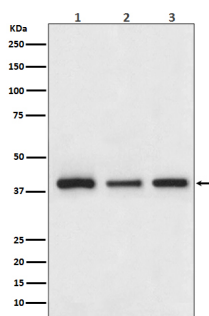


All lanes use the Antibody at 1:5K dilution for 1 hour at room temperature.



All lanes use the Antibody at 1:5K dilution for 1 hour at room temperature.

Western blot analysis of Cathepsin L/V/K/H expression in (1) HepG2 cell lysate; (2) NIH/3T3 cell lysate; (3) PC-12 cell lysate;



All lanes use the Antibody at 1:5K dilution for 1 hour at room temperature.

**Submit a product review to Biocompare.com**

Submit a review of this product to Biocompare.com to receive a \$20 Amazon.com giftcard! Your reviews help your fellow scientists make the right decisions. Thank you for your contribution.



Anti-Cathepsin L/V/K/H Rabbit Monoclonal Antibody

For Research Use Only. Not for use in diagnostic procedures.