

Anti-IQGAP1 Mouse Monoclonal Antibody [Clone ID: OTI5F9]

Catalog Number: M01603-1

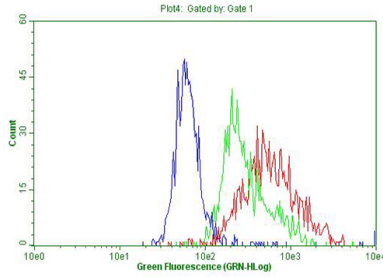
Overview

| | |
|----------------------|--|
| Product Name | Anti-IQGAP1 Mouse Monoclonal Antibody [Clone ID: OTI5F9] |
| Reactive Species | Human, Mouse, Rat |
| Description | Boster Bio IQGAP1 mouse monoclonal antibody, clone OTI5F9. Catalog# M01603-1. Tested in FC, IHC, WB. This antibody reacts with Human, Mouse, Rat. |
| Conjugate | Unconjugated |
| Application | Flow Cytometry, IHC, WB |
| Clonality | Monoclonal OTI5F9 |
| Formulation | PBS (pH 7.3) containing 1% stabilizing protein, 50% glycerol and 0.02% sodium azide. This antibody is supplied in a stabilized formulation. Compatibility with conjugation reactions depends on the chemistry of the conjugation method used. For conjugation methods that are not compatible with the stabilizing components present in this formulation, a carrier-free antibody format is required. |
| Storage Instructions | Store at -20°C for one year. For short term storage and frequent use, store at 4°C for up to one month. Avoid repeated freeze-thaw cycles. |
| Host | Mouse |
| Uniprot ID | P46940 |

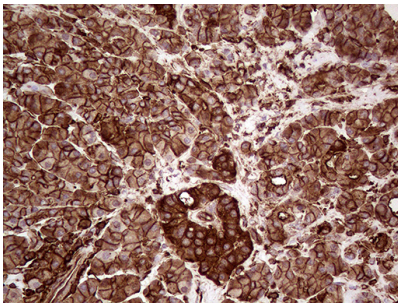
Technical Details

| | |
|---------------------|---|
| Immunogen | Human recombinant protein fragment corresponding to amino acids 464-609 of human IQGAP1 (NP_003861) produced in E.coli. |
| Isotype | IgG2b |
| Concentration | 1 mg/ml |
| Purification | Purified from mouse ascites fluids or tissue culture supernatant by affinity chromatography (protein A/G) |
| Suggested Dilutions | WB 1:500~2000 IHC 1:5000 |

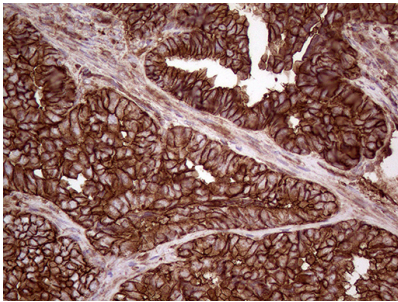
Anti-IQGAP1 Mouse Monoclonal Antibody [Clone ID: OTI5F9] (M01603-1) Images



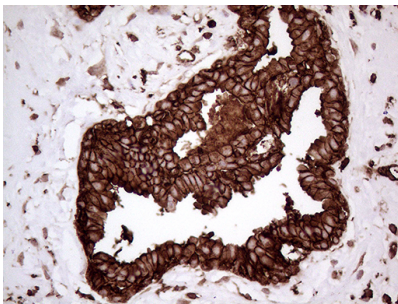
Flow cytometric Analysis of permeabilized A549 cells



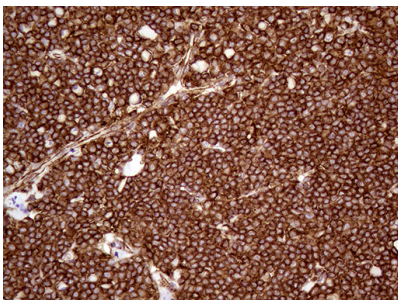
Immunohistochemical staining of paraffin-embedded Human pancreas tissue within the normal limits using anti-IQGAP1 mouse monoclonal antibody. (Heat-induced epitope retrieval by 1mM EDTA in 10mM Tris buffer (pH8.5) at 120°C for 3min)



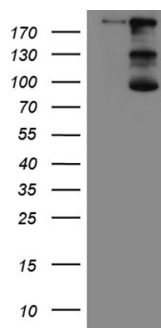
Immunohistochemical staining of paraffin-embedded Adenocarcinoma of Human endometrium tissue using anti-IQGAP1 mouse monoclonal antibody. (Heat-induced epitope retrieval by 1mM EDTA in 10mM Tris buffer (pH8.5) at 120°C for 3min)



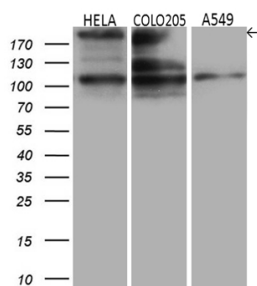
Immunohistochemical staining of paraffin-embedded Human breast tissue within the normal limits using anti-IQGAP1 mouse monoclonal antibody. (Heat-induced epitope retrieval by 1mM EDTA in 10mM Tris buffer (pH8.5) at 120°C for 3min)



Immunohistochemical staining of paraffin-embedded Human lymphoma tissue using anti-IQGAP1 mouse monoclonal antibody. (Heat-induced epitope retrieval by 1mM EDTA in 10mM Tris buffer (pH8.5) at 120°C for 3min)



HEK293T cells were transfected with the pCMV6-ENTRY control (Left lane) or pCMV6-ENTRY IQGAP1 (Right lane) cDNA for 48 hrs and lysed. Equivalent amounts of cell lysates (5 ug per lane) were separated by SDS-PAGE and immunoblotted with anti-IQGAP1 (1:2000).



Western blot analysis of extracts (35ug) from 3 different cell lines by using anti-IQGAP1 monoclonal antibody (1:500).

Submit a product review to Biocompare.com

Submit a review of this product to Biocompare.com to receive a \$20 Amazon.com giftcard! Your reviews help your fellow scientists make the right decisions. Thank you for your contribution.



Anti-IQGAP1 Mouse Monoclonal Antibody [Clone ID: OT15F9]

For Research Use Only. Not for use in diagnostic procedures.