

Anti-CCL19 Rabbit Monoclonal Antibody

Catalog Number: M01605-2

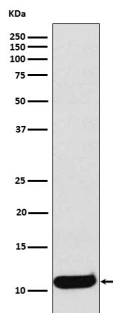
Overview

Product Name	Anti-CCL19 Rabbit Monoclonal Antibody
Reactive Species	Human
Description	Boster Bio Anti-CCL19 Rabbit Monoclonal Antibody catalog # M01605-2. Tested in WB, Flow Cytometry applications. This antibody reacts with Human.
Application	Flow Cytometry, WB
Clonality	Monoclonal 23C03
Formulation	Rabbit IgG in stabilizing components, phosphate buffered saline, pH 7.4, 150mM NaCl, 0.02% sodium azide and 50% glycerol. *This antibody is supplied in a stabilized formulation. Compatibility with conjugation reactions depends on the chemistry of the conjugation method used. For conjugation methods that are not compatible with the stabilizing components present in this formulation, a carrier-free antibody format is required.
Storage Instructions	Store at -20°C for one year. For short term storage and frequent use, store at 4°C for up to one month. Avoid repeated freeze-thaw cycles.
Host	Rabbit
Uniprot ID	Q99731

Technical Details

Immunogen	A synthesized peptide derived from human CCL19
Isotype	IgG
Form	Liquid
Concentration	0.5mg/ml
Purification	Affinity-chromatography
Suggested Dilutions	WB 1:1000-5000 FC 1:100

Anti-CCL19 Rabbit Monoclonal Antibody (M01605-2) Images



Western blot analysis of CCL19 expression in Human Macrophage Inflammatory Protein 3 beta recombinant protein lysate.

Submit a product review to Biocompare.com

Submit a review of this product to Biocompare.com to receive a \$20 Amazon.com giftcard! Your reviews help your fellow scientists make the right decisions. Thank you for your contribution.



Anti-CCL19 Rabbit Monoclonal Antibody

For Research Use Only. Not for use in diagnostic procedures.