

## Anti-Neutrophil Elastase ELANE Rabbit Monoclonal Antibody

Catalog Number: M01607

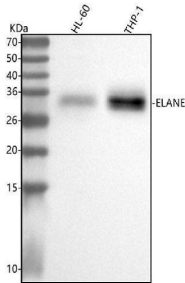
### Overview

Product Name	Anti-Neutrophil Elastase ELANE Rabbit Monoclonal Antibody
Reactive Species	Human
Description	Boster Bio Anti-Neutrophil Elastase ELANE Rabbit Monoclonal Antibody catalog # M01607. Tested in WB, IHC, ICC/IF, Flow Cytometry applications. This antibody reacts with Human.
Application	Flow Cytometry, IF, IHC, ICC, WB
Clonality	Monoclonal AOCI-5
Formulation	Rabbit IgG in stabilizing components, phosphate buffered saline, pH 7.4, 150mM NaCl, 0.02% sodium azide and 50% glycerol. *This antibody is supplied in a stabilized formulation. Compatibility with conjugation reactions depends on the chemistry of the conjugation method used. For conjugation methods that are not compatible with the stabilizing components present in this formulation, a carrier-free antibody format is required.
Storage Instructions	Store at -20°C for one year. For short term storage and frequent use, store at 4°C for up to one month. Avoid repeated freeze-thaw cycles.
Host	Rabbit
Uniprot ID	P08246

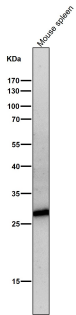
### Technical Details

Immunogen	A synthesized peptide derived from human Neutrophil Elastase
Isotype	Rabbit IgG
Form	Liquid
Concentration	0.5mg/ml
Purification	Affinity-chromatography
Suggested Dilutions	WB 1:500-2000 IHC 1:50-200 ICC/IF 1:50-200 FC 1:30

## Anti-Neutrophil Elastase ELANE Rabbit Monoclonal Antibody (M01607) Images



Western blot analysis of Neutrophil Elastase using anti-Neutrophil Elastase antibody (M01607). Electrophoresis was performed on a 5-20% SDS-PAGE gel at 70V (Stacking gel) / 90V (Resolving gel) for 2-3 hours. The sample well of each lane was loaded with 30 ug of sample under reducing conditions. Lane 1: human HL-60 whole cell lysates, Lane 2: human THP-1 whole cell lysates. After electrophoresis, proteins were transferred to a nitrocellulose membrane at 150 mA for 50-90 minutes. Blocked the membrane with 5% non-fat milk/TBS for 1.5 hour at RT. The membrane was incubated with rabbit anti-Neutrophil Elastase antigen affinity purified monoclonal antibody (Catalog # M01607) at 1:500 overnight at 4°C, then washed with TBS-0.1%Tween 3 times with 5 minutes each and probed with a goat anti-rabbit IgG-HRP secondary antibody at a dilution of 1:500 for 1.5 hour at RT. The signal is developed using an Enhanced Chemiluminescent detection (ECL) kit (Catalog # EK1002) with Tanon 5200 system. A specific band was detected for Neutrophil Elastase at approximately 29 kDa. The expected band size for Neutrophil Elastase is at 29 kDa.



All lanes use the Antibody at 1:5K dilution for 1 hour at room temperature.

### Submit a product review to Biocompare.com

Submit a review of this product to Biocompare.com to receive a \$20 Amazon.com giftcard! Your reviews help your fellow scientists make the right decisions. Thank you for your contribution.



Anti-Neutrophil Elastase ELANE Rabbit Monoclonal Antibody

For Research Use Only. Not for use in diagnostic procedures.