

Anti-SLUG (SNAI2) Mouse Monoclonal Antibody [Clone ID: OTI1A6]

Catalog Number: M01615-1

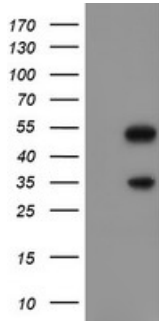
Overview

Product Name	Anti-SLUG (SNAI2) Mouse Monoclonal Antibody [Clone ID: OTI1A6]
Reactive Species	Human, Mouse, Rat
Description	Boster Bio SNAI2 (SLUG) mouse monoclonal antibody, clone OTI1A6 (formerly 1A6). Catalog# M01615-1. Tested in FC, IHC, WB. This antibody reacts with Human, Mouse, Rat.
Application	Flow Cytometry, IHC, WB
Clonality	Monoclonal OTI1A6
Formulation	PBS (pH 7.3) containing 1% stabilizing protein, 50% glycerol and 0.02% sodium azide. This antibody is supplied in a stabilized formulation. Compatibility with conjugation reactions depends on the chemistry of the conjugation method used. For conjugation methods that are not compatible with the stabilizing components present in this formulation, a carrier-free antibody format is required.
Storage Instructions	Store at -20°C as received.
Host	Mouse
Uniprot ID	O43623

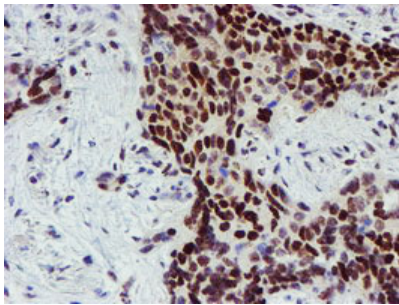
Technical Details

Immunogen	Full length human recombinant protein of human SNAI2 (NP_003059) produced in E.coli.
Isotype	IgG1
Concentration	1 mg/ml
Purification	Purified from mouse ascites fluids or tissue culture supernatant by affinity chromatography (protein A/G)
Suggested Dilutions	WB 1:1000 IHC 1:150 Flow Cytometry 1:100

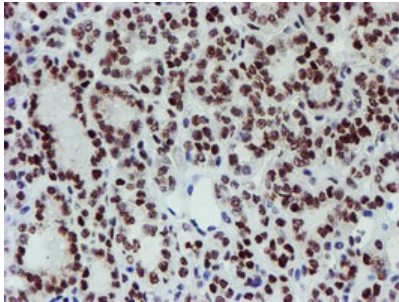
Anti-SLUG (SNAI2) Mouse Monoclonal Antibody [Clone ID: OTI1A6] (M01615-1) Images



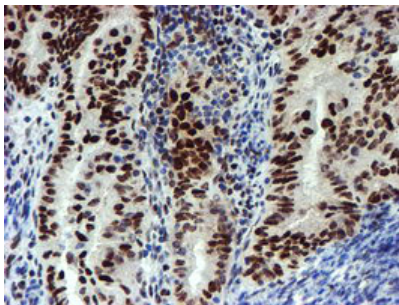
HEK293T cells were transfected with the pCMV6-ENTRY control (Left lane) or pCMV6-ENTRY SNAI2 (Right lane) cDNA for 48 hrs and lysed. Equivalent amounts of cell lysates (5 ug per lane) were separated by SDS-PAGE and immunoblotted with anti-SNAI2.



Immunohistochemical staining of paraffin-embedded Carcinoma of Human lung tissue using anti-SNAI2 mouse monoclonal antibody. (Heat-induced epitope retrieval by 10mM citric buffer)



Immunohistochemical staining of paraffin-embedded Carcinoma of Human thyroid tissue using anti-SNAI2 mouse monoclonal antibody. (Heat-induced epitope retrieval by 10mM citric buffer)



Immunohistochemical staining of paraffin-embedded Adenocarcinoma of Human endometrium tissue using anti-SNAI2 mouse monoclonal antibody. (Heat-induced epitope retrieval by 10mM citric buffer)

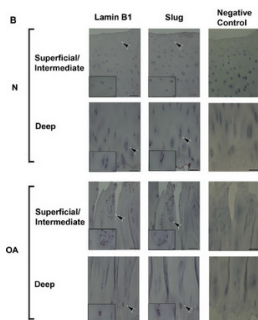
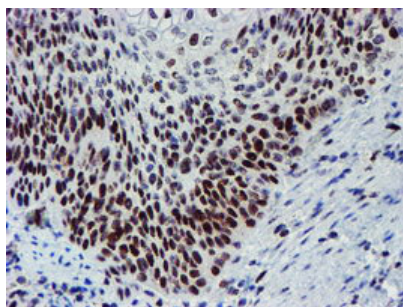
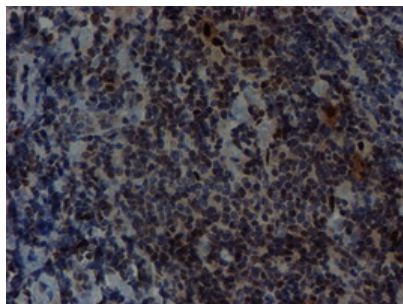


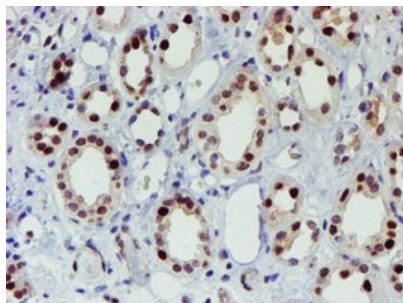
Figure from citation: Immunohistochemical analysis of Slug (also known as SNAI2) on serial sections of cartilage from normal and OA cartilage by using anti-SNAI2 antibody. Bar=100 um



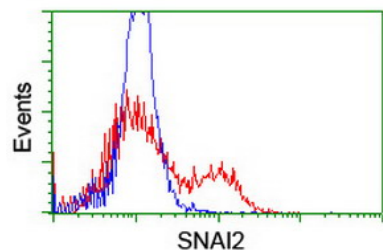
Immunohistochemical staining of paraffin-embedded Carcinoma of Human bladder tissue using anti-SNAI2 mouse monoclonal antibody. (Heat-induced epitope retrieval by 10mM citric buffer)



Immunohistochemical staining of paraffin-embedded Human lymphoma tissue using anti-SNAI2 mouse monoclonal antibody. (Heat-induced epitope retrieval by 10mM citric buffer)



Immunohistochemical staining of paraffin-embedded Human Kidney tissue within the normal limits using anti-SNAI2 mouse monoclonal antibody. (Heat-induced epitope retrieval by 10mM citric buffer)



HEK293T cells transfected with either SNAI2 (Myc-DDK-tagged) overexpress plasmid (Red) or empty vector control plasmid (Blue) were immunostained by anti-SNAI2 antibody (M01615-1)

Submit a product review to Biocompare.com

Submit a review of this product to Biocompare.com to receive a \$20 Amazon.com giftcard! Your reviews help your fellow scientists make the right decisions. Thank you for your contribution.



Anti-SLUG (SNAI2) Mouse Monoclonal Antibody [Clone ID: OT1A6]

For Research Use Only. Not for use in diagnostic procedures.