

Anti-SLUG (SNAI2) Mouse Monoclonal Antibody [Clone ID: OTI2B11]

Catalog Number: M01615-2

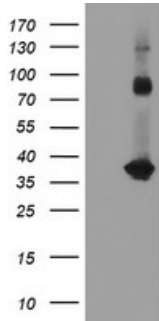
Overview

Product Name	Anti-SLUG (SNAI2) Mouse Monoclonal Antibody [Clone ID: OTI2B11]
Reactive Species	Human, Mouse, Rat
Description	Boster Bio SNAI2 (SLUG) mouse monoclonal antibody, clone OTI2B11 (formerly 2B11). Catalog# M01615-2. Tested in FC, IF, IHC, WB. This antibody reacts with Human, Mouse, Rat.
Application	Flow Cytometry, IF, IHC, WB
Clonality	Monoclonal OTI2B11
Formulation	PBS (pH 7.3) containing 1% stabilizing protein, 50% glycerol and 0.02% sodium azide. This antibody is supplied in a stabilized formulation. Compatibility with conjugation reactions depends on the chemistry of the conjugation method used. For conjugation methods that are not compatible with the stabilizing components present in this formulation, a carrier-free antibody format is required.
Storage Instructions	Store at -20°C as received.
Host	Mouse
Uniprot ID	O43623

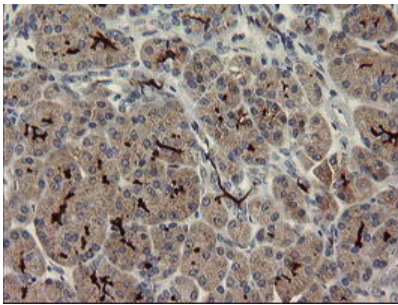
Technical Details

Immunogen	Full length human recombinant protein of human SNAI2 (NP_003059) produced in E.coli.
Isotype	IgG1
Concentration	1 mg/ml
Purification	Purified from mouse ascites fluids or tissue culture supernatant by affinity chromatography (protein A/G)
Suggested Dilutions	WB 1:2000 IHC 1:150 IF 1:100 Flow Cytometry 1:100

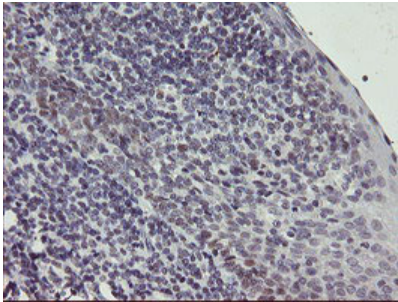
Anti-SLUG (SNAI2) Mouse Monoclonal Antibody [Clone ID: OTI2B11] (M01615-2) Images



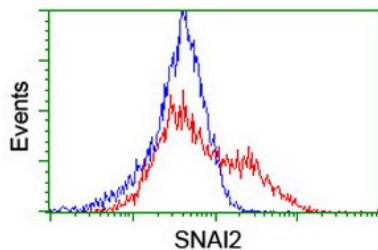
HEK293T cells were transfected with the pCMV6-ENTRY control (Left lane) or pCMV6-ENTRY SNAI2 (Right lane) cDNA for 48 hrs and lysed. Equivalent amounts of cell lysates (5 ug per lane) were separated by SDS-PAGE and immunoblotted with anti-SNAI2.



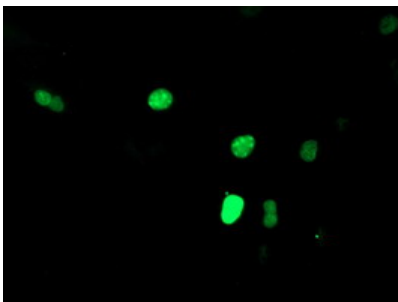
Immunohistochemical staining of paraffin-embedded Human pancreas tissue within the normal limits using anti-SNAI2 mouse monoclonal antibody. (Heat-induced epitope retrieval by 10mM citric buffer)



Immunohistochemical staining of paraffin-embedded Human tonsil within the normal limits using anti-SNAI2 mouse monoclonal antibody. (Heat-induced epitope retrieval by 10mM citric buffer)



HEK293T cells transfected with either SNAI2 (Myc-DDK-tagged) overexpress plasmid (Red) or empty vector control plasmid (Blue) were immunostained by anti-SNAI2 antibody (M01615-2)



Anti-SNAI2 mouse monoclonal antibody (M01615-2) immunofluorescent staining of COS7 cells transiently transfected by pCMV6-ENTRY SNAI2.

Submit a product review to Biocompare.com

Submit a review of this product to Biocompare.com to receive a \$20 Amazon.com giftcard! Your reviews help your fellow scientists make the right decisions. Thank you for your contribution.



Anti-SLUG (SNAI2) Mouse Monoclonal Antibody [Clone ID: OTI2B11]

For Research Use Only. Not for use in diagnostic procedures.