

Anti-BCL10 Antibody

Catalog Number: M01616

About BCL10

Promotes apoptosis, pro-caspase-9 maturation and activation of NF-kappa-B via NIK and IKK. May be an adapter protein between upstream TNFR1-TRADD-RIP complex and the downstream NIK-IKK-IKAP complex. Is a substrate for MALT1.

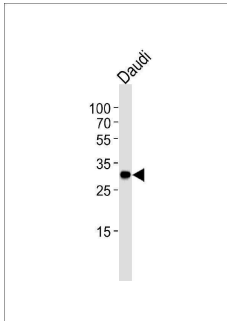
Overview

| | |
|----------------------|--|
| Product Name | Anti-BCL10 Antibody |
| Reactive Species | Human |
| Description | Boster Bio Anti-BCL10 Antibody (Catalog # M01616). Tested in IHC-P, Flow Cytometry, WB application(s). This antibody reacts with Human. |
| Application | Flow Cytometry, IHC-P, WB |
| Clonality | Monoclonal 1185CT13.2.1.2 |
| Formulation | Purified monoclonal antibody supplied in PBS with 0.09% (W/V) sodium azide. |
| Storage Instructions | Maintain refrigerated at 2-8°C for up to 2 weeks. For long-term storage, store at -20°C in small aliquots to prevent freeze-thaw cycles. |
| Host | Mouse |
| Uniprot ID | O95999 |

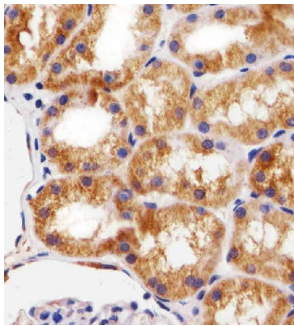
Technical Details

| | |
|----------------------------|---|
| Immunogen | This BCL10 antibody is generated from a mouse immunized with a KLH conjugated synthetic peptide between 1-143 amino acids from the human region of human BCL10. |
| Predicted Reactive Species | Bovine, Chicken, Horse, Monkey, Pig, Sheep, Xenopus |
| Isotype | IgG1,kappa |
| Purification | This antibody is purified through a protein G column, followed by dialysis against PBS. |
| Suggested Dilutions | WB: 1:2000 IHC-P: 1:25 FC: 1:25 |

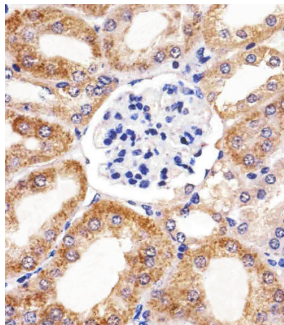
Anti-BCL10 Antibody (M01616) Images



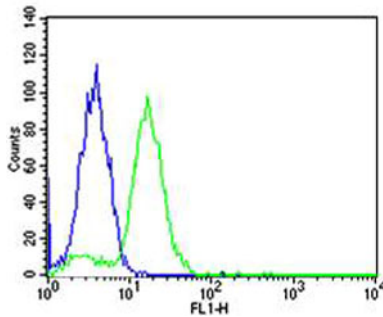
Western blot analysis of lysate from Daudi cell line using BCL10 Antibody. M01616 was diluted at 1:1000 at each lane. A goat anti-mouse IgG H&L (HRP) at 1:3000 dilution was used as the secondary antibody. Lysate at 35ug per lane.



Immunohistochemical analysis of paraffin-embedded H. kidney section using BCL10 Antibody. M01616 was diluted at 1:25 dilution. A peroxidase-conjugated goat anti-mouse IgG at 1:400 dilution was used as the secondary antibody, followed by DAB staining.



Immunohistochemical analysis of paraffin-embedded M. kidney section using BCL10 Antibody. M01616 was diluted at 1:25 dilution. A peroxidase-conjugated goat anti-mouse IgG at 1:400 dilution was used as the secondary antibody, followed by DAB staining.



Flow cytometric analysis of HeLa cells using BCL10 Antibody (green, Cat#M01616) compared to an isotype control of mouse IgG1 (blue). M01616 was diluted at 1:25 dilution. An Alexa Fluor® 488 goat anti-mouse IgG at 1:400 dilution was used as the secondary antibody.

Submit a product review to Biocompare.com

Submit a review of this product to Biocompare.com to receive a \$20 Amazon.com giftcard! Your reviews help your fellow scientists make the right decisions. Thank you for your contribution.



Anti-BCL10 Antibody

For Research Use Only. Not for use in diagnostic procedures.