

Anti-Catenin alpha 1 CTNNA1 Rabbit Monoclonal Antibody

Catalog Number: M01617

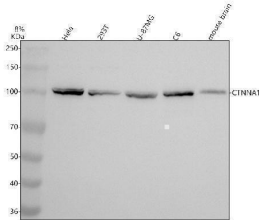
Overview

Product Name	Anti-Catenin alpha 1 CTNNA1 Rabbit Monoclonal Antibody
Reactive Species	Human, Mouse, Rat
Description	Boster Bio Anti-Catenin alpha 1 CTNNA1 Rabbit Monoclonal Antibody catalog # M01617. Tested in WB, IHC, ICC/IF, IP, Flow Cytometry applications. This antibody reacts with Human, Mouse, Rat.
Application	Flow Cytometry, IP, IF, IHC, ICC, WB
Clonality	Monoclonal FBO-3
Formulation	Rabbit IgG in stabilizing components, phosphate buffered saline, pH 7.4, 150mM NaCl, 0.02% sodium azide and 50% glycerol. *This antibody is supplied in a stabilized formulation. Compatibility with conjugation reactions depends on the chemistry of the conjugation method used. For conjugation methods that are not compatible with the stabilizing components present in this formulation, a carrier-free antibody format is required.
Storage Instructions	Store at -20°C for one year. For short term storage and frequent use, store at 4°C for up to one month. Avoid repeated freeze-thaw cycles.
Host	Rabbit
Uniprot ID	P35221

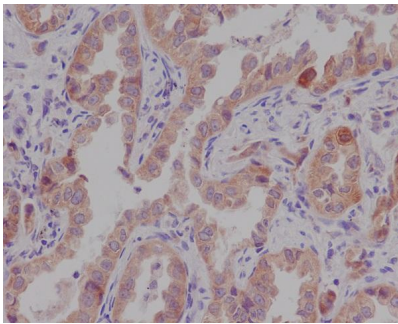
Technical Details

Immunogen	A synthesized peptide derived from human Catenin alpha 1
Isotype	Rabbit IgG
Form	Liquid
Concentration	0.5mg/ml
Purification	Affinity-chromatography
Suggested Dilutions	WB 1:1000-5000 IHC 1:50-200 ICC/IF 1:50-200 IP 1:20 FC 1:20

Anti-Catenin alpha 1 CTNNA1 Rabbit Monoclonal Antibody (M01617) Images



Western blot analysis of CTNNA1 using anti-CTNNA1 antibody (M01617). Electrophoresis was performed on a 8% SDS-PAGE gel at 80V (Stacking gel) / 120V (Resolving gel) for 2 hours. The sample well of each lane was loaded with 30 ug of sample under reducing conditions. Lane 1: human Hela whole cell lysates, Lane 2: human 293T whole cell lysates, Lane 3: human U-87MG whole cell lysates, Lane 4: rat C6 whole cell lysates, Lane 5: mouse brain tissue lysates. After electrophoresis, proteins were transferred to a nitrocellulose membrane at 150 mA for 50-90 minutes. Blocked the membrane with 5% non-fat milk/TBS for 1.5 hour at RT. The membrane was incubated with rabbit anti-CTNNA1 antigen affinity purified monoclonal antibody (M01617) at 1:10000 overnight at 4°C, then washed with TBS-0.1%Tween 3 times with 5 minutes each and probed with a goat anti-rabbit IgG-HRP secondary antibody at a dilution of 1:5000 for 1.5 hour at RT. The signal is developed using an ECL Plus Western Blotting Substrate (Catalog # AR1196-200) with Tanon 5200 system. A specific band was detected for CTNNA1 at approximately 100 kDa. The expected band size for CTNNA1 is at 100 kDa.



Immunohistochemical analysis of paraffin-embedded human lung cancer, using Catenin alpha 1 Antibody.

2 Publications Citing This Product

1. PubMed ID: 15484291, Prognostic and clinicopathological features of E-cadherin, β -catenin, γ -catenin, δ -catenin and cyclin D1 expression in human esophageal squamous cell carcinoma
2. PubMed ID: 27065079, TALENs-directed knockout of the full-length transcription factor Nrf1 that represses malignant behaviour of human hepatocellular carcinoma (HepG2) cells

Visit bosterbio.com/anti-catenin-alpha-1-rabbit-monoclonal-antibody-m01617-boster.html to see all 2 publications.

Submit a product review to Biocompare.com

Submit a review of this product to Biocompare.com to receive a \$20 Amazon.com giftcard! Your reviews help your fellow scientists make the right decisions. Thank you for your contribution.



Anti-Catenin alpha 1 CTNNA1 Rabbit Monoclonal Antibody

For Research Use Only. Not for use in diagnostic procedures.