

Anti-SNAP25 Rabbit Monoclonal Antibody

Catalog Number: M01625

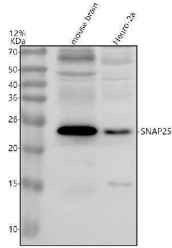
Overview

Product Name	Anti-SNAP25 Rabbit Monoclonal Antibody
Reactive Species	Human, Mouse, Rat
Description	Boster Bio Anti-SNAP25 Rabbit Monoclonal Antibody catalog # M01625. Tested in WB, ICC/IF, IP applications. This antibody reacts with Human, Mouse, Rat.
Application	IP, IF, ICC, WB
Clonality	Monoclonal ABHE-19
Formulation	Rabbit IgG in stabilizing components, phosphate buffered saline, pH 7.4, 150mM NaCl, 0.02% sodium azide and 50% glycerol. *This antibody is supplied in a stabilized formulation. Compatibility with conjugation reactions depends on the chemistry of the conjugation method used. For conjugation methods that are not compatible with the stabilizing components present in this formulation, a carrier-free antibody format is required.
Storage Instructions	Store at -20°C for one year. For short term storage and frequent use, store at 4°C for up to one month. Avoid repeated freeze-thaw cycles.
Host	Rabbit
Uniprot ID	P60880

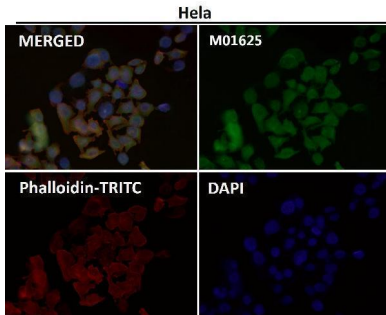
Technical Details

Immunogen	A synthesized peptide derived from human SNAP25
Isotype	Rabbit IgG
Form	Liquid
Concentration	0.5mg/ml
Purification	Affinity-chromatography
Suggested Dilutions	WB 1:500-2000 ICC/IF 1:50-200 IP 1:20

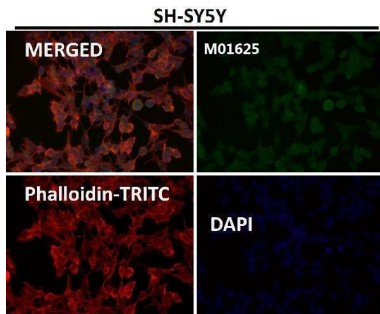
Anti-SNAP25 Rabbit Monoclonal Antibody (M01625) Images



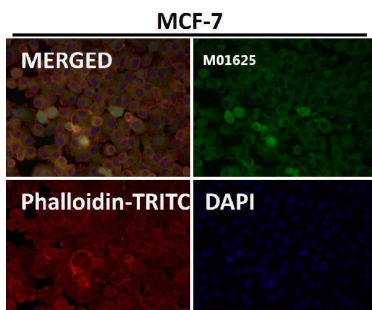
Western blot analysis of SNAP25 using anti-SNAP25 antibody (M01625). Electrophoresis was performed on a 12% SDS-PAGE gel at 80V (Stacking gel) / 120V (Resolving gel) for 2 hours. The sample well of each lane was loaded with 30 ug of sample under reducing conditions. Lane 1: mouse brain tissue lysates, Lane 2: mouse Neuro-2a whole cell lysates. After electrophoresis, proteins were transferred to a nitrocellulose membrane at 150 mA for 50-90 minutes. Blocked the membrane with 5% non-fat milk/TBS for 1.5 hour at RT. The membrane was incubated with rabbit anti-SNAP25 antigen affinity purified monoclonal antibody (M01625) at 1:500 overnight at 4°C, then washed with TBS-0.1% Tween 3 times with 5 minutes each and probed with a goat anti-rabbit IgG-HRP secondary antibody at a dilution of 1:5000 for 1.5 hour at RT. The signal is developed using an ECL Plus Western Blotting Substrate (Catalog # AR1196-200) with Tanon 5200 system. A specific band was detected for SNAP25 at approximately 25 kDa. The expected band size for SNAP25 is at 23 kDa.



Immunofluorescent analysis using the Antibody at 1:50 dilution.

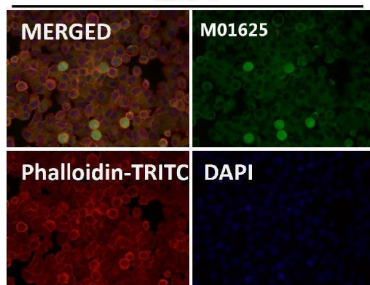


Immunofluorescent analysis using the Antibody at 1:50 dilution.



Immunofluorescent analysis using the Antibody at 1:50 dilution.

MCF-7



Immunofluorescent analysis using the Antibody at 1:50 dilution.

2 Publications Citing This Product

1. PubMed ID: 32930942, Guan Y, Chen X, Zhao B, Shi Y, Han F. What Happened in the Hippocampal Axon in a Rat Model of Posttraumatic Stress Disorder. Cell Mol Neurobiol. 2020 Sep 15. doi:10.1007/s10571-020-00960-w. Epub ahead of print. PMID:32930942.
2. PubMed ID: 28761431, Zhong ZQ, Xiang Y, Hu X, Wang YC, Zeng X, Wang XM, Xia QJ, Wang TH, Zhang X. Neural Regen Res. 2017 Jun;12(6):969-976. doi: 10.4103/1673-5374.208592. Synaptosomal-associated protein 25 may be an intervention target for improving sensory and loco...

Visit bosterbio.com/anti-snap25-rabbit-monoclonal-antibody-m01625-boster.html to see all 2 publications.

Submit a product review to Biocompare.com

Submit a review of this product to Biocompare.com to receive a \$20 Amazon.com giftcard! Your reviews help your fellow scientists make the right decisions. Thank you for your contribution.



Anti-SNAP25 Rabbit Monoclonal Antibody

For Research Use Only. Not for use in diagnostic procedures.