

## Anti-CD21 CR2 Rabbit Monoclonal Antibody, Clone#RM372

Catalog Number: M01632-1

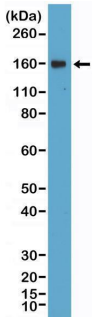
### Overview

Product Name	Anti-CD21 CR2 Rabbit Monoclonal Antibody, Clone#RM372
Reactive Species	Human
Description	Boster Bio Anti-CD21 CR2 Rabbit Monoclonal Antibody, Clone#RM372 (Catalog # M01632-1). Tested in IHC, WB applications. This antibody reacts with Human.
Application	IHC, WB
Clonality	Monoclonal RM372
Formulation	50% Glycerol/PBS with 1% stabilizing protein and 0.09% sodium azide This antibody is supplied in a stabilized formulation. Compatibility with conjugation reactions depends on the chemistry of the conjugation method used. For conjugation methods that are not compatible with the stabilizing components present in this formulation, a carrier-free antibody format is required.
Storage Instructions	Store at -20°C for one year. Avoid repeated freeze-thaw cycles.
Host	Rabbit
Uniprot ID	P20023

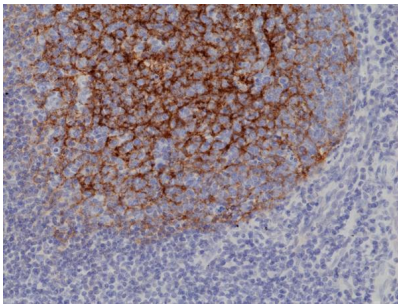
### Technical Details

Immunogen	A peptide corresponding to the C-terminus of human CD21 (Complement receptor type 2)
Cross Reactivity	This antibody reacts to human CD21 (Complement receptor type 2)
Isotype	Rabbit IgG
Form	Liquid
Concentration	0.5-1mg/ml, actual concentration vary by lot. Use suggested dilution ratio to decide dilution procedure.
Purification	Protein A affinity purified from an animal origin-free culture supernatant
Suggested Dilutions	Immunohistochemistry (IHC): 1:500-1:1000 dilution WB: 1:200-1:1000 dilution.

## Anti-CD21 CR2 Rabbit Monoclonal Antibody, Clone#RM372 (M01632-1) Images



Western Blotting result Western Blot of Daudi lysate using anti-CD21 rabbit monoclonal antibody (Clone RM372) at a 1:400 dilution.



IHC result Immunohistochemical staining of formalin fixed and paraffin embedded human tonsil tissue section using anti-CD21 rabbit monoclonal antibody (Clone RM372) at a 1:1000 dilution.

### Submit a product review to Biocompare.com

Submit a review of this product to Biocompare.com to receive a \$20 Amazon.com giftcard! Your reviews help your fellow scientists make the right decisions. Thank you for your contribution.



Anti-CD21 CR2 Rabbit Monoclonal Antibody, Clone#RM372

For Research Use Only. Not for use in diagnostic procedures.