

Anti-CD21/CR2 Antibody (Monoclonal, 31C59)

Catalog Number: M01632-3

About CR2

Complement receptor type 2 (CR2), also known as complement C3d receptor, Epstein-Barr virus receptor, and CD21 (cluster of differentiation 21), is a protein that in humans is encoded by the CR2 gene. This gene encodes a membrane protein, which functions as a receptor for Epstein-Barr virus (EBV) binding on B and T lymphocytes. Genetic variations in this gene are associated with susceptibility to systemic lupus erythematosus type 9 (SLEB9). Alternatively spliced transcript variants encoding different isoforms have been found for this gene.

Overview

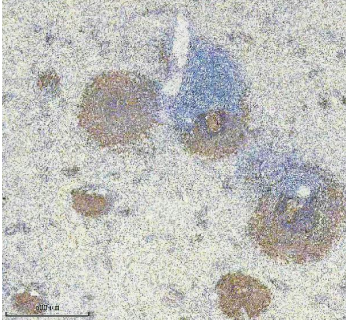
| | |
|----------------------|--|
| Product Name | Anti-CD21/CR2 Antibody (Monoclonal, 31C59) |
| Reactive Species | Human, Mouse, Rat |
| Description | Boster Bio Anti-CD21/CR2 Antibody (Monoclonal, 31C59) catalog # M01632-3. Tested in WB, IHC, IF, ICC/IF, IP, Flow Cytometry applications. This antibody reacts with Human, Mouse, Rat. |
| Application | Flow Cytometry, IP, IF, IHC, ICC, WB |
| Clonality | Monoclonal 31C59 |
| Formulation | Rabbit IgG in stabilizing components, phosphate buffered saline, pH 7.4, 150mM NaCl, 0.02% sodium azide and 50% glycerol. This antibody is supplied in a stabilized formulation. Compatibility with conjugation reactions depends on the chemistry of the conjugation method used. For conjugation methods that are not compatible with the stabilizing components present in this formulation, a carrier-free antibody format is required. |
| Storage Instructions | Store at -20°C for one year. For short term storage and frequent use, store at 4°C for up to one month. Avoid repeated freeze-thaw cycles. |
| Host | Rabbit |
| Uniprot ID | P20023 |

Technical Details

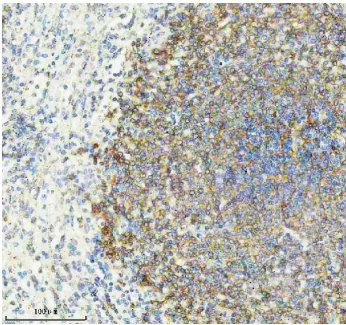
| | |
|---------------------|--|
| Immunogen | Synthetic peptide within Human CD21 aa 991-1031. |
| Form | Liquid |
| Concentration | 500 ug/ml |
| Purification | Protein A affinity purified. |
| Suggested Dilutions | Western blot, 1:500-2000 Immunohistochemistry, 1:50-200 Immunofluorescence, 1:50-200 |

| | |
|--|---|
| | Immunocytochemistry/Immunofluorescence, 1:50-200 ImmunoPrecipitation, 1:50 Flow Cytometry (Fixed), 1:50-200 |
|--|---|

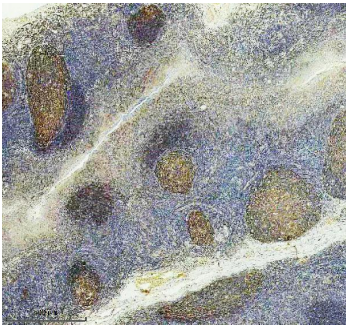
Anti-CD21/CR2 Antibody (Monoclonal, 31C59) (M01632-3) Images



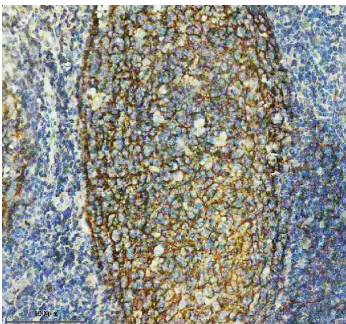
IHC analysis of CD21 using anti-CD21 antibody (M01632-3). CD21 was detected in a paraffin-embedded section of human spleen tissue. Heat mediated antigen retrieval was performed in EDTA buffer (pH 8.0, epitope retrieval solution). The tissue section was blocked with 10% goat serum. The tissue section was then incubated with 1:50 rabbit anti-CD21 Antibody (M01632-3) overnight at 4°C. Peroxidase Conjugated Goat Anti-rabbit IgG was used as secondary antibody and incubated for 30 minutes at 37°C. The tissue section was developed using HRP Conjugated Rabbit IgG Super Vision Assay Kit (Catalog # SV0002) with DAB as the chromogen.



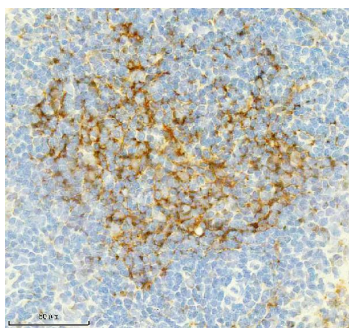
IHC analysis of CD21 using anti-CD21 antibody (M01632-3). CD21 was detected in a paraffin-embedded section of human spleen tissue. Heat mediated antigen retrieval was performed in EDTA buffer (pH 8.0, epitope retrieval solution). The tissue section was blocked with 10% goat serum. The tissue section was then incubated with 1:50 rabbit anti-CD21 Antibody (M01632-3) overnight at 4°C. Peroxidase Conjugated Goat Anti-rabbit IgG was used as secondary antibody and incubated for 30 minutes at 37°C. The tissue section was developed using HRP Conjugated Rabbit IgG Super Vision Assay Kit (Catalog # SV0002) with DAB as the chromogen.



IHC analysis of CD21 using anti-CD21 antibody (M01632-3). CD21 was detected in a paraffin-embedded section of human tonsil tissue. Heat mediated antigen retrieval was performed in EDTA buffer (pH 8.0, epitope retrieval solution). The tissue section was blocked with 10% goat serum. The tissue section was then incubated with 1:50 rabbit anti-CD21 Antibody (M01632-3) overnight at 4°C. Peroxidase Conjugated Goat Anti-rabbit IgG was used as secondary antibody and incubated for 30 minutes at 37°C. The tissue section was developed using HRP Conjugated Rabbit IgG Super Vision Assay Kit (Catalog # SV0002) with DAB as the chromogen.



IHC analysis of CD21 using anti-CD21 antibody (M01632-3). CD21 was detected in a paraffin-embedded section of human tonsil tissue. Heat mediated antigen retrieval was performed in EDTA buffer (pH 8.0, epitope retrieval solution). The tissue section was blocked with 10% goat serum. The tissue section was then incubated with 1:50 rabbit anti-CD21 Antibody (M01632-3) overnight at 4°C. Peroxidase Conjugated Goat Anti-rabbit IgG was used as secondary antibody and incubated for 30 minutes at 37°C. The tissue section was developed using HRP Conjugated Rabbit IgG Super Vision Assay Kit (Catalog # SV0002) with DAB as the chromogen.



IHC analysis of CD21 using anti-CD21 antibody (M01632-3). CD21 was detected in a paraffin-embedded section of mouse spleen tissue. Heat mediated antigen retrieval was performed in EDTA buffer (pH 8.0, epitope retrieval solution). The tissue section was blocked with 10% goat serum. The tissue section was then incubated with 1:50 rabbit anti-CD21 Antibody (M01632-3) overnight at 4°C. Peroxidase Conjugated Goat Anti-rabbit IgG was used as secondary antibody and incubated for 30 minutes at 37°C. The tissue section was developed using HRP Conjugated Rabbit IgG Super Vision Assay Kit (Catalog # SV0002) with DAB as the chromogen.

Submit a product review to [Biocompare.com](https://www.biocompare.com)

Submit a review of this product to [Biocompare.com](https://www.biocompare.com) to receive a \$20 Amazon.com giftcard! Your reviews help your fellow scientists make the right decisions. Thank you for your contribution.



Anti-CD21/CR2 Antibody (Monoclonal, 31C59)

For Research Use Only. Not for use in diagnostic procedures.