

Anti-TPH2 Rabbit Monoclonal Antibody

Catalog Number: M01643

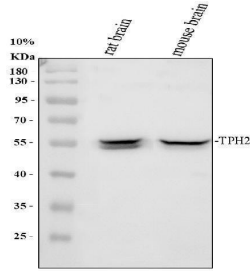
Overview

Product Name	Anti-TPH2 Rabbit Monoclonal Antibody
Reactive Species	
Description	Boster Bio Anti-TPH2 Rabbit Monoclonal Antibody catalog # M01643. Tested in WB, IHC, IF applications. This antibody reacts with Mouse, Rat.
Application	IF, IHC, WB
Clonality	Monoclonal
Formulation	Rabbit IgG in stabilizing components, phosphate buffered saline, pH 7.4, 150mM NaCl, 0.02% sodium azide and 50% glycerol. *This antibody is supplied in a stabilized formulation. Compatibility with conjugation reactions depends on the chemistry of the conjugation method used. For conjugation methods that are not compatible with the stabilizing components present in this formulation, a carrier-free antibody format is required.
Storage Instructions	Store at -20°C for one year. For short term storage and frequent use, store at 4°C for up to one month. Avoid repeated freeze-thaw cycles.
Host	Rabbit
Uniprot ID	Q8IWU9

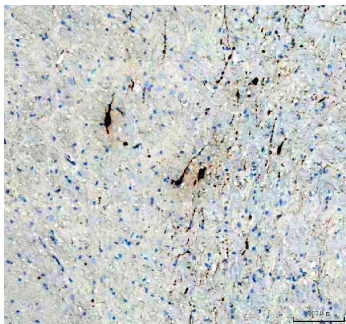
Technical Details

Immunogen	Recombinant protein with human TPH2 (Position: M1-I490).
Isotype	Rabbit IgG
Form	Liquid
Purification	Affinity-chromatography
Suggested Dilutions	WB 1:500-1:3000 IHC 1:50-1:200 IF 1:50-1:200

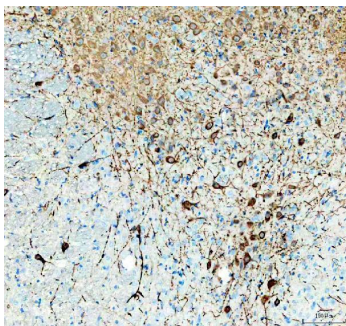
Anti-TPH2 Rabbit Monoclonal Antibody (M01643) Images



Western blot analysis of TPH2 using anti-TPH2 antibody (M01643). Electrophoresis was performed on a 10% SDS-PAGE gel at 80V (Stacking gel) / 120V (Resolving gel) for 2 hours. The sample well of each lane was loaded with 30 ug of sample under reducing conditions. Lane 1: rat brain tissue lysates, Lane 2: mouse brain tissue lysates. After electrophoresis, proteins were transferred to a nitrocellulose membrane at 150 mA for 50-90 minutes. Blocked the membrane with 5% non-fat milk/TBS for 1.5 hour at RT. The membrane was incubated with rabbit anti-TPH2 antigen affinity purified monoclonal antibody (M01643) at 1:500 overnight at 4°C, then washed with TBS-0.1% Tween 3 times with 5 minutes each and probed with a goat anti-rabbit IgG-HRP secondary antibody at a dilution of 1:5000 for 1.5 hour at RT. The signal is developed using an ECL Plus Western Blotting Substrate (Catalog # AR1196-200) with Tanon 5200 system. A specific band was detected for TPH2 at approximately 56 kDa. The expected band size for TPH2 is at 56 kDa.



IHC analysis of TPH2 using anti-TPH2 antibody (M01643). TPH2 was detected in a paraffin-embedded section of mouse brain tissue. Heat mediated antigen retrieval was performed in EDTA buffer (pH 8.0, epitope retrieval solution). The tissue section was blocked with 10% goat serum. The tissue section was then incubated with 1:50 rabbit anti-TPH2 Antibody (M01643) overnight at 4°C. Peroxidase Conjugated Goat Anti-rabbit IgG was used as secondary antibody and incubated for 30 minutes at 37°C. The tissue section was developed using HRP Conjugated Rabbit IgG Super Vision Assay Kit (Catalog # SV0002) with DAB as the chromogen.



IHC analysis of TPH2 using anti-TPH2 antibody (M01643). TPH2 was detected in a paraffin-embedded section of rat brain tissue. Heat mediated antigen retrieval was performed in EDTA buffer (pH 8.0, epitope retrieval solution). The tissue section was blocked with 10% goat serum. The tissue section was then incubated with 1:50 rabbit anti-TPH2 Antibody (M01643) overnight at 4°C. Peroxidase Conjugated Goat Anti-rabbit IgG was used as secondary antibody and incubated for 30 minutes at 37°C. The tissue section was developed using HRP Conjugated Rabbit IgG Super Vision Assay Kit (Catalog # SV0002) with DAB as the chromogen.

Submit a product review to [Biocompare.com](https://www.biocompare.com)

Submit a review of this product to [Biocompare.com](https://www.biocompare.com) to receive a \$20 Amazon.com giftcard! Your reviews help your fellow scientists make the right decisions. Thank you for your contribution.



Anti-TPH2 Rabbit Monoclonal Antibody

For Research Use Only. Not for use in diagnostic procedures.