

Anti-Carboxypeptidase M (CPM) Mouse Monoclonal Antibody [Clone ID: OTI4E11]

Catalog Number: M01650

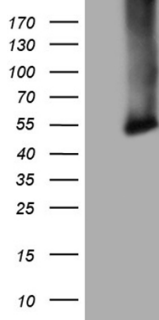
Overview

Product Name	Anti-Carboxypeptidase M (CPM) Mouse Monoclonal Antibody [Clone ID: OTI4E11]
Reactive Species	Human, Mouse, Rat
Description	Boster Bio CPM mouse monoclonal antibody, clone OTI4E11. Catalog# M01650. Tested in IHC, WB. This antibody reacts with Human, Mouse, Rat.
Application	IHC, WB
Clonality	Monoclonal OTI4E11
Formulation	PBS (pH 7.3) containing 1% stabilizing protein, 50% glycerol and 0.02% sodium azide. This antibody is supplied in a stabilized formulation. Compatibility with conjugation reactions depends on the chemistry of the conjugation method used. For conjugation methods that are not compatible with the stabilizing components present in this formulation, a carrier-free antibody format is required.
Storage Instructions	Store at -20°C as received.
Host	Mouse
Uniprot ID	P14384

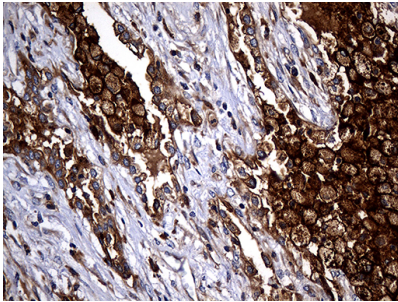
Technical Details

Immunogen	Human recombinant protein fragment corresponding to amino acids 124-423 of human CPM (NP_001865) produced in E.coli.
Isotype	IgG1
Concentration	1 mg/ml
Purification	Purified from mouse ascites fluids or tissue culture supernatant by affinity chromatography (protein A/G)
Suggested Dilutions	WB 1:2000 IHC 1:2000

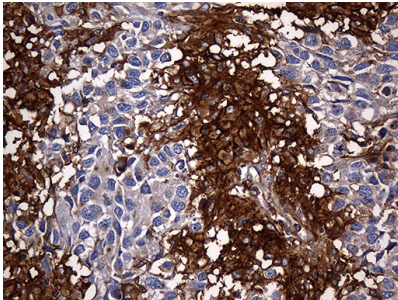
Anti-Carboxypeptidase M (CPM) Mouse Monoclonal Antibody [Clone ID: OTI4E11] (M01650) Images



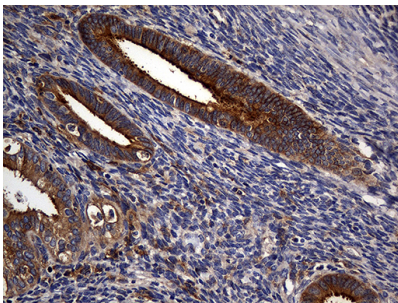
HEK293T cells were transfected with the pCMV6-ENTRY control (Left lane) or pCMV6-ENTRY CPM (Right lane) cDNA for 48 hrs and lysed. Equivalent amounts of cell lysates (5 ug per lane) were separated by SDS-PAGE and immunoblotted with anti-CPM (1:2000).



Immunohistochemical staining of paraffin-embedded Carcinoma of Human lung tissue using anti-CPM mouse monoclonal antibody. (Heat-induced epitope retrieval by 1mM EDTA in 10mM Tris buffer (pH8.5) at 120°C for 3min)

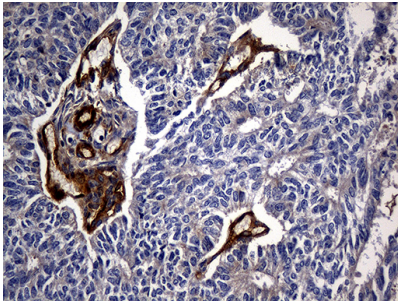


Immunohistochemical staining of paraffin-embedded Adenocarcinoma of Human ovary tissue using anti-CPM mouse monoclonal antibody. (Heat-induced epitope retrieval by 1mM EDTA in 10mM Tris buffer (pH8.5) at 120°C for 3min)

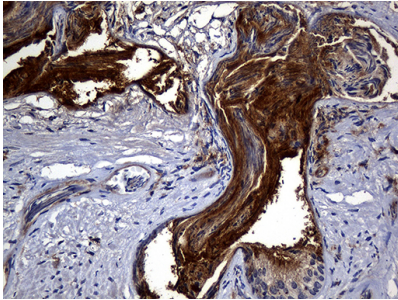


Immunohistochemical staining of paraffin-embedded Human endometrium tissue within the normal limits using anti-CPM mouse monoclonal antibody. (Heat-induced epitope retrieval by 1mM EDTA in 10mM Tris buffer (pH8.5) at 120°C for 3min)

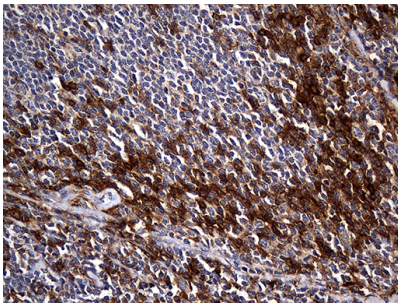
Immunohistochemical staining of paraffin-embedded Adenocarcinoma of Human endometrium tissue using anti-CPM mouse monoclonal antibody. (Heat-induced epitope retrieval by 1mM EDTA in 10mM Tris buffer (pH8.5) at 120°C for 3min)



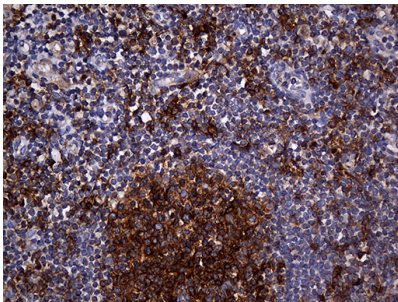
Immunohistochemical staining of paraffin-embedded Human prostate tissue within the normal limits using anti-CPM mouse monoclonal antibody. (Heat-induced epitope retrieval by 1mM EDTA in 10mM Tris buffer (pH8.5) at 120Å°C for 3min)



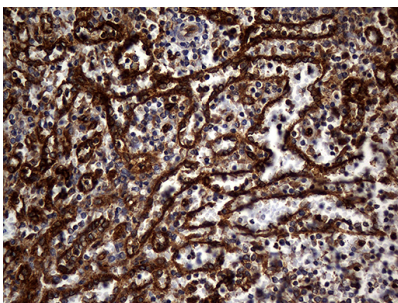
Immunohistochemical staining of paraffin-embedded Human lymphoma tissue using anti-CPM mouse monoclonal antibody. (Heat-induced epitope retrieval by 1mM EDTA in 10mM Tris buffer (pH8.5) at 120Å°C for 3min)



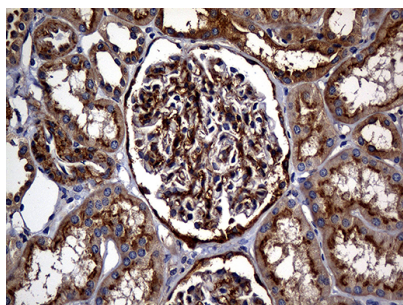
Immunohistochemical staining of paraffin-embedded Human tonsil within the normal limits using anti-CPM mouse monoclonal antibody. (Heat-induced epitope retrieval by 1mM EDTA in 10mM Tris buffer (pH8.5) at 120Å°C for 3min)



Immunohistochemical staining of paraffin-embedded Human spleen tissue within the normal limits using anti-CPM mouse monoclonal antibody. (Heat-induced epitope retrieval by 1mM EDTA in 10mM Tris buffer (pH8.5) at 120Å°C for 3min)



Immunohistochemical staining of paraffin-embedded Human Kidney tissue within the normal limits using anti-CPM mouse monoclonal antibody. (Heat-induced epitope retrieval by



1mM EDTA in 10mM Tris buffer (pH8.5) at 120°C for 3min

Submit a product review to Biocompare.com

Submit a review of this product to Biocompare.com to receive a \$20 Amazon.com giftcard! Your reviews help your fellow scientists make the right decisions. Thank you for your contribution.



Anti-Carboxypeptidase M (CPM) Mouse Monoclonal Antibody [Clone ID: OTI4E11]

For Research Use Only. Not for use in diagnostic procedures.