

Anti-PEBP1/Pbp Rabbit Monoclonal Antibody

Catalog Number: M01668

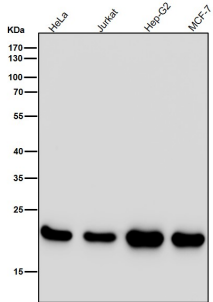
Overview

| | |
|----------------------|--|
| Product Name | Anti-PEBP1/Pbp Rabbit Monoclonal Antibody |
| Reactive Species | Human, Mouse, Rat |
| Description | Boster Bio Anti-PEBP1/Pbp Rabbit Monoclonal Antibody catalog # M01668. Tested in WB, IHC, ICC/IF, IP applications. This antibody reacts with Human, Mouse, Rat. |
| Application | IP, IF, IHC, ICC, WB |
| Clonality | Monoclonal EII-16 |
| Formulation | Rabbit IgG in stabilizing components, phosphate buffered saline, pH 7.4, 150mM NaCl, 0.02% sodium azide and 50% glycerol. *This antibody is supplied in a stabilized formulation. Compatibility with conjugation reactions depends on the chemistry of the conjugation method used. For conjugation methods that are not compatible with the stabilizing components present in this formulation, a carrier-free antibody format is required. |
| Storage Instructions | Store at -20°C for one year. For short term storage and frequent use, store at 4°C for up to one month. Avoid repeated freeze-thaw cycles. |
| Host | Rabbit |
| Uniprot ID | P30086 |

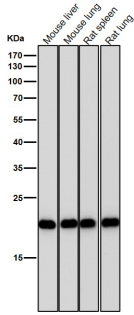
Technical Details

| | |
|---------------------|---|
| Immunogen | A synthesized peptide derived from human PEBP1 |
| Isotype | Rabbit IgG |
| Form | Liquid |
| Concentration | 0.5mg/ml |
| Purification | Affinity-chromatography |
| Suggested Dilutions | WB 1:500-2000 IHC 1:50-200 ICC/IF 1:50-200 IP 1:20 |

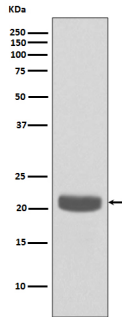
Anti-PEBP1/Pbp Rabbit Monoclonal Antibody (M01668) Images



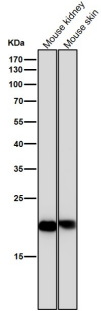
All lanes use the Antibody at 1:5K dilution for 1 hour at room temperature.



All lanes use the Antibody at 1:5K dilution for 1 hour at room temperature.

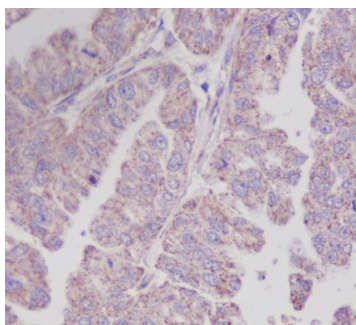
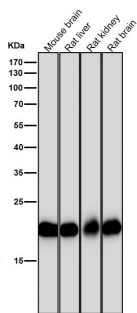


Western blot analysis of PEBP1 expression in A549 cell lysate.

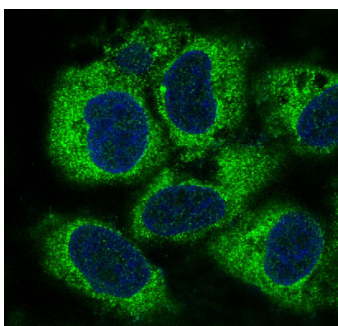


All lanes use the Antibody at 1:5K dilution for 1 hour at room temperature.

All lanes use the Antibody at 1:5K dilution for 1 hour at room temperature.



Immunohistochemical analysis of paraffin-embedded human liver, using PEBP1 Antibody.



Immunofluorescent analysis of HeLa cells, using PEBP1 Antibody.

Submit a product review to [Biocompare.com](https://www.biocompare.com)

Submit a review of this product to [Biocompare.com](https://www.biocompare.com) to receive a \$20 Amazon.com giftcard! Your reviews help your fellow scientists make the right decisions. Thank you for your contribution.



Anti-PEBP1/Pbp Rabbit Monoclonal Antibody

For Research Use Only. Not for use in diagnostic procedures.