

Anti-CD146 Rabbit Monoclonal Antibody, Clone#RM249

Catalog Number: M01683-2

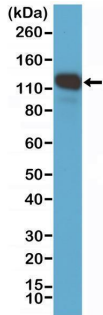
Overview

Product Name	Anti-CD146 Rabbit Monoclonal Antibody, Clone#RM249
Reactive Species	Human
Description	Boster Bio Anti-CD146 Rabbit Monoclonal Antibody, Clone#RM249 (Catalog # M01683-2). Tested in IHC, WB applications. This antibody reacts with Human.
Application	IHC, WB
Clonality	Monoclonal RM249
Formulation	50% Glycerol/PBS with 1% stabilizing protein and 0.09% sodium azide This antibody is supplied in a stabilized formulation. Compatibility with conjugation reactions depends on the chemistry of the conjugation method used. For conjugation methods that are not compatible with the stabilizing components present in this formulation, a carrier-free antibody format is required.
Storage Instructions	Store at -20°C for one year. Avoid repeated freeze-thaw cycles.
Host	Rabbit
Uniprot ID	P43121

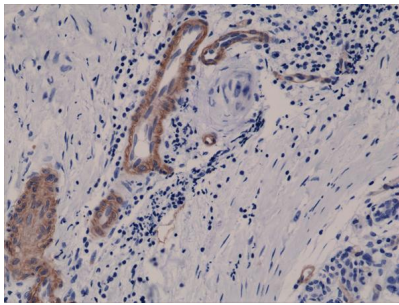
Technical Details

Immunogen	A synthetic peptide corresponding to the residues near C-terminus of human CD146
Predicted Reactive Species	Mouse, Rat
Cross Reactivity	This antibody reacts to human CD146 (Cell surface glycoprotein MUC18). This antibody may also react to mouse or rat CD146, as predicted by immunogen homology
Isotype	Rabbit IgG
Form	Liquid
Concentration	0.5-1mg/ml, actual concentration vary by lot. Use suggested dilution ratio to decide dilution procedure.
Purification	Protein A affinity purified from an animal origin-free culture supernatant
Suggested Dilutions	Immunohistochemistry (IHC): 1:200-1:500 dilution WB: 1:1000-1:2000 dilution.

Anti-CD146 Rabbit Monoclonal Antibody, Clone#RM249 (M01683-2) Images



Western Blotting result Western Blot of A375 cell lysate, using Anti-CD146 RM249 at a 1:1000 dilution, showed CD146 (~110 kDa) expression in A375 cells.



IHC result Immunohistochemical staining of formalin fixed and paraffin embedded human breast cancer tissue sections using Anti-CD146 RM249 at a 1:400 dilution.

Submit a product review to Biocompare.com

Submit a review of this product to Biocompare.com to receive a \$20 Amazon.com giftcard! Your reviews help your fellow scientists make the right decisions. Thank you for your contribution.



Anti-CD146 Rabbit Monoclonal Antibody, Clone#RM249

For Research Use Only. Not for use in diagnostic procedures.