

Anti-67kDa Laminin Receptor RPSA Rabbit Monoclonal Antibody

Catalog Number: M01691

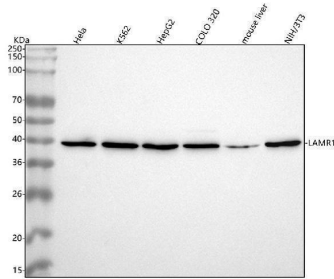
Overview

Product Name	Anti-67kDa Laminin Receptor RPSA Rabbit Monoclonal Antibody
Reactive Species	Human, Mouse, Rat
Description	Boster Bio Anti-67kDa Laminin Receptor RPSA Rabbit Monoclonal Antibody catalog # M01691. Tested in WB, IHC, ICC/IF, IP, Flow Cytometry applications. This antibody reacts with Human, Mouse, Rat.
Application	Flow Cytometry, IP, IF, IHC, ICC, WB
Clonality	Monoclonal AOA0-18
Formulation	Rabbit IgG in stabilizing components, phosphate buffered saline, pH 7.4, 150mM NaCl, 0.02% sodium azide and 50% glycerol. *This antibody is supplied in a stabilized formulation. Compatibility with conjugation reactions depends on the chemistry of the conjugation method used. For conjugation methods that are not compatible with the stabilizing components present in this formulation, a carrier-free antibody format is required.
Storage Instructions	Store at -20°C for one year. For short term storage and frequent use, store at 4°C for up to one month. Avoid repeated freeze-thaw cycles.
Host	Rabbit
Uniprot ID	P08865

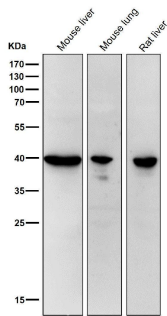
Technical Details

Immunogen	A synthesized peptide derived from human 67kDa Laminin Receptor
Isotype	Rabbit IgG
Form	Liquid
Concentration	0.5mg/ml
Purification	Affinity-chromatography
Suggested Dilutions	WB 1:500-2000 IHC 1:50-200 ICC/IF 1:50-200 IP 1:20 FC 1:20

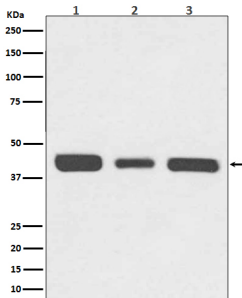
Anti-67kDa Laminin Receptor RPSA Rabbit Monoclonal Antibody (M01691) Images



Western blot analysis of 67kDa Laminin Receptor using anti-67kDa Laminin Receptor antibody (M01691). Electrophoresis was performed on a 5-20% SDS-PAGE gel at 70V (Stacking gel) / 90V (Resolving gel) for 2-3 hours. The sample well of each lane was loaded with 30 ug of sample under reducing conditions. Lane 1: human HeLa whole cell lysates, Lane 2: human K562 whole cell lysates, Lane 3: human HepG2 whole cell lysates, Lane 4: human COLO320 whole cell lysates, Lane 5: mouse liver tissue lysates, Lane 6: mouse NIH/3T3 whole cell lysates. After electrophoresis, proteins were transferred to a nitrocellulose membrane at 150 mA for 50-90 minutes. Blocked the membrane with 5% non-fat milk/TBS for 1.5 hour at RT. The membrane was incubated with rabbit anti-67kDa Laminin Receptor antigen affinity purified monoclonal antibody (Catalog # M01691) at 1:500 overnight at 4°C, then washed with TBS-0.1%Tween 3 times with 5 minutes each and probed with a goat anti-rabbit IgG-HRP secondary antibody at a dilution of 1:500 for 1.5 hour at RT. The signal is developed using an Enhanced Chemiluminescent detection (ECL) kit (Catalog # EK1002) with Tanon 5200 system. A specific band was detected for 67kDa Laminin Receptor at approximately 40 kDa. The expected band size for 67kDa Laminin Receptor is at 33 kDa.



All lanes use the Antibody at 1:6K dilution for 1 hour at room temperature.



Western blot analysis of 67kDa Laminin Receptor expression in (1) HeLa cell lysate; (2) NIH/3T3 cell lysate; (3) PC-12 cell lysate.

1 Publications Citing This Product

1. PubMed ID: 33245424, Shi W, Bian L, Lv D, Bi S, Dai Y, Yang K, Lu H, Zhou H, Que Y, Wang D, Zhang Z, Lu N. Enhanced neural differentiation of neural stem cells by sustained release of Shh from TG2 gene-modified EMSC co-culture in vitro. *Amino Acids*. 2020 Nov 27. doi: 10.1007/

Visit bosterbio.com/anti-67kda-laminin-receptor-rabbit-monoclonal-antibody-m01691-boster.html to see all 1 publications.

Submit a product review to Biocompare.com

Submit a review of this product to Biocompare.com to receive a \$20 Amazon.com giftcard! Your reviews help your fellow scientists make the right decisions. Thank you for your contribution.



Anti-67kDa Laminin Receptor RPSA Rabbit Monoclonal Antibody

For Research Use Only. Not for use in diagnostic procedures.