

Anti-Integrin alpha 6 ITGA6 Rabbit Monoclonal Antibody

Catalog Number: M01693

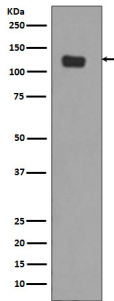
Overview

Product Name	Anti-Integrin alpha 6 ITGA6 Rabbit Monoclonal Antibody
Reactive Species	Human, Mouse, Rat
Description	Boster Bio Anti-Integrin alpha 6 ITGA6 Rabbit Monoclonal Antibody catalog # M01693. Tested in WB, IHC, ICC/IF applications. This antibody reacts with Human, Mouse, Rat.
Application	IF, IHC, ICC, WB
Clonality	Monoclonal DHG-9
Formulation	Rabbit IgG in stabilizing components, phosphate buffered saline, pH 7.4, 150mM NaCl, 0.02% sodium azide and 50% glycerol. *This antibody is supplied in a stabilized formulation. Compatibility with conjugation reactions depends on the chemistry of the conjugation method used. For conjugation methods that are not compatible with the stabilizing components present in this formulation, a carrier-free antibody format is required.
Storage Instructions	Store at -20°C for one year. For short term storage and frequent use, store at 4°C for up to one month. Avoid repeated freeze-thaw cycles.
Host	Rabbit
Uniprot ID	P23229

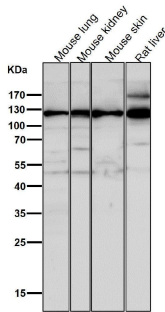
Technical Details

Immunogen	A synthesized peptide derived from human Integrin alpha 6
Isotype	Rabbit IgG
Form	Liquid
Concentration	0.5mg/ml
Purification	Affinity-chromatography
Suggested Dilutions	WB 1:500-2000 IHC 1:50-200 ICC/IF 1:50-200

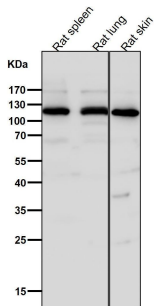
Anti-Integrin alpha 6 ITGA6 Rabbit Monoclonal Antibody (M01693) Images



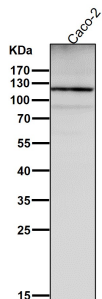
Western blot analysis of Integrin alpha 6 expression in SW480 cell lysate (M01693). Electrophoresis was performed on a 5-20% SDS-PAGE gel at 70V (Stacking gel) / 90V (Resolving gel) for 2-3 hours. The sample well of each lane was loaded with 50ug of sample under reducing conditions. After Electrophoresis, proteins were transferred to a Nitrocellulose membrane at 150mA for 50-90 minutes. Blocked the membrane with 5% Non-fat Milk/ TBS for 1.5 hour at RT. The membrane was incubated with rabbit anti-ITGA6 monoclonal antibody (Catalog # M01693) overnight at 4 then washed with TBS-0.1%Tween 3 times with 5 minutes each and probed with a goat anti-rabbit IgG-HRP secondary antibody at a dilution of 1:10000 for 1.5 hour at RT. The signal is developed using an Enhanced Chemiluminescent detection (ECL) kit (Catalog # EK1002) with Tanon 5200 system. A specific band was detected for ITGA6



All lanes use the Antibody at 1:1W dilution for 1 hour at room temperature

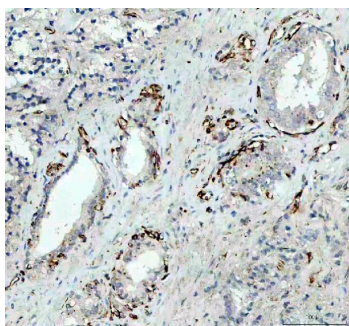


All lanes use the Antibody at 1:1W dilution for 1 hour at room temperature

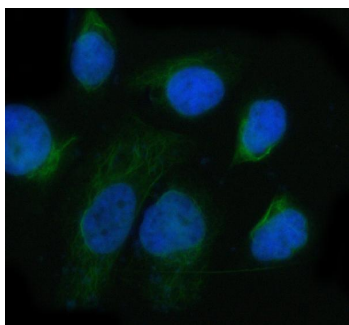


All lanes use the Antibody at 1:1W dilution for 1 hour at room temperature.

IHC analysis of ITGA6 using anti-ITGA6 antibody (M01693).



ITGA6 was detected in a paraffin-embedded section of human prostate cancer tissue. Heat mediated antigen retrieval was performed in EDTA buffer (pH 8.0, epitope retrieval solution). The tissue section was blocked with 10% goat serum. The tissue section was then incubated with 1:50 rabbit anti-ITGA6 Antibody (M01693) overnight at 4°C. Peroxidase Conjugated Goat Anti-rabbit IgG was used as secondary antibody and incubated for 30 minutes at 37°C. The tissue section was developed using HRP Conjugated Rabbit IgG Super Vision Assay Kit (Catalog # SV0002) with DAB as the chromogen.



IF analysis of ITGA6 using anti-ITGA6 antibody (M01693). ITGA6 was detected in immunocytochemical section of HeLa cell. Enzyme antigen retrieval was performed using IHC enzyme antigen retrieval reagent (AR0022) for 15 mins. The cells were blocked with 10% goat serum. And then incubated at 1:50 with rabbit anti-ITGA6 Antibody (M01693) overnight at 4°C. DyLight®488 Conjugated Goat Anti-Rabbit IgG (BA1127) was used as secondary antibody at 1:500 dilution and incubated for 30 minutes at 37°C. The section was counterstained with DAPI. Visualize using a fluorescence microscope and filter sets appropriate for the label used.

1 Publications Citing This Product

1. PubMed ID: , A three-dimensional biomimetic peripheral nerve model for drug testing and disease modelling

Visit bosterbio.com/anti-integrin-alpha-6-rabbit-monoclonal-antibody-m01693-boster.html to see all 1 publications.

Submit a product review to Biocompare.com

Submit a review of this product to Biocompare.com to receive a \$20 Amazon.com giftcard! Your reviews help your fellow scientists make the right decisions. Thank you for your contribution.



Anti-Integrin alpha 6 ITGA6 Rabbit Monoclonal Antibody

For Research Use Only. Not for use in diagnostic procedures.