

Anti-MGP Mouse Monoclonal Antibody [Clone ID: OTI11G6]

Catalog Number: M01702

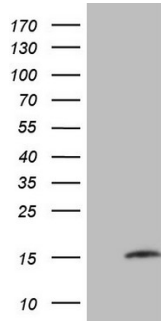
Overview

Product Name	Anti-MGP Mouse Monoclonal Antibody [Clone ID: OTI11G6]
Reactive Species	Human
Description	Boster Bio MGP mouse monoclonal antibody, clone OTI11G6 (formerly 11G6). Catalog# M01702. Tested in IHC, WB. This antibody reacts with Human.
Application	IHC, WB
Clonality	Monoclonal OTI11G6
Formulation	PBS (pH 7.3) containing 1% stabilizing protein, 50% glycerol and 0.02% sodium azide. This antibody is supplied in a stabilized formulation. Compatibility with conjugation reactions depends on the chemistry of the conjugation method used. For conjugation methods that are not compatible with the stabilizing components present in this formulation, a carrier-free antibody format is required.
Storage Instructions	Store at -20°C as received.
Host	Mouse
Uniprot ID	P08493

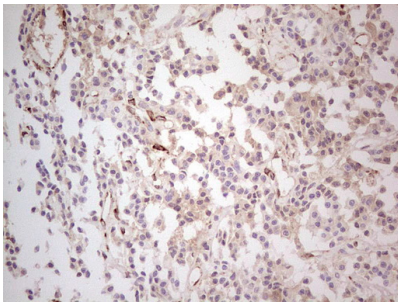
Technical Details

Immunogen	Full length human recombinant protein of human MGP (NP_000891) produced in E.coli.
Isotype	IgG2a
Concentration	1 mg/ml
Purification	Purified from mouse ascites fluids or tissue culture supernatant by affinity chromatography (protein A/G)
Suggested Dilutions	WB 1:2000

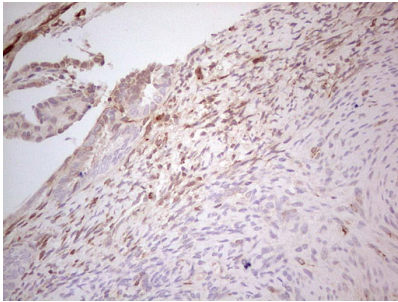
Anti-MGP Mouse Monoclonal Antibody [Clone ID: OTI11G6] (M01702) Images



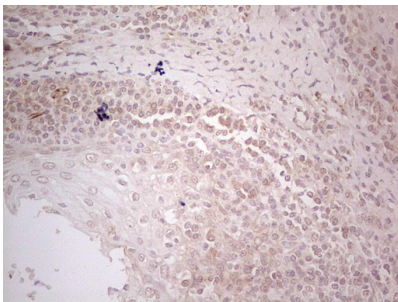
HEK293T cells were transfected with the pCMV6-ENTRY control (Left lane) or pCMV6-ENTRY MGP (Right lane) cDNA for 48 hrs and lysed. Equivalent amounts of cell lysates (5 ug per lane) were separated by SDS-PAGE and immunoblotted with anti-MGP.



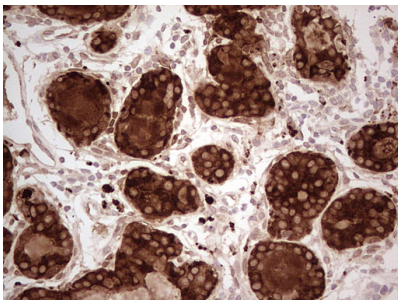
Immunohistochemical staining of paraffin-embedded Carcinoma of Human lung tissue using anti-MGP mouse monoclonal antibody. (Heat-induced epitope retrieval by Tris-EDTA)



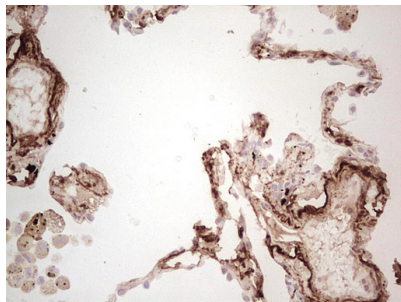
Immunohistochemical staining of paraffin-embedded Human endometrium tissue within the normal limits using anti-MGP mouse monoclonal antibody. (Heat-induced epitope retrieval by Tris-EDTA)



Immunohistochemical staining of paraffin-embedded Human tonsil within the normal limits using anti-MGP mouse monoclonal antibody. (Heat-induced epitope retrieval by Tris-EDTA)



Immunohistochemical staining of paraffin-embedded Adenocarcinoma of Human breast tissue using anti-MGP mouse monoclonal antibody. (Heat-induced epitope retrieval by Tris-EDTA)



Immunohistochemical staining of paraffin-embedded Human lung tissue within the normal limits using anti-MGP mouse monoclonal antibody. (Heat-induced epitope retrieval by Tris-EDTA)

Submit a product review to Biocompare.com

Submit a review of this product to Biocompare.com to receive a \$20 Amazon.com giftcard! Your reviews help your fellow scientists make the right decisions. Thank you for your contribution.



Anti-MGP Mouse Monoclonal Antibody [Clone ID: OT111G6]

For Research Use Only. Not for use in diagnostic procedures.