

Anti-IDO1 Mouse Monoclonal Antibody [Clone ID: OTI2B5]

Catalog Number: M01705-3

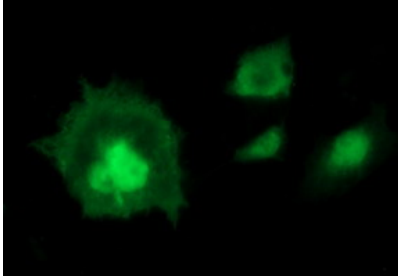
Overview

Product Name	Anti-IDO1 Mouse Monoclonal Antibody [Clone ID: OTI2B5]
Reactive Species	Human
Description	Boster Bio IDO1 mouse monoclonal antibody, clone OTI2B5 (formerly 2B5). Catalog# M01705-3. Tested in IF, IHC, WB. This antibody reacts with Human.
Conjugate	Unconjugated
Application	IF, IHC, WB
Clonality	Monoclonal OTI2B5
Formulation	PBS (pH 7.3) containing 1% stabilizing protein, 50% glycerol and 0.02% sodium azide. This antibody is supplied in a stabilized formulation. Compatibility with conjugation reactions depends on the chemistry of the conjugation method used. For conjugation methods that are not compatible with the stabilizing components present in this formulation, a carrier-free antibody format is required.
Storage Instructions	Store at -20°C as received.
Host	Mouse
Uniprot ID	P14902

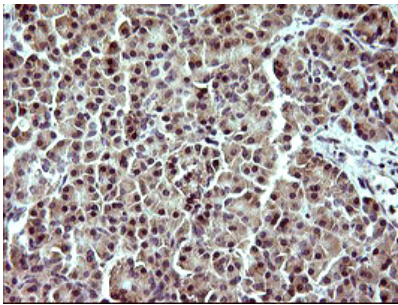
Technical Details

Immunogen	Full length human recombinant protein of human IDO1 (NP_002155) produced in HEK293T cell.
Isotype	IgG1
Concentration	1 mg/ml
Purification	Purified from mouse ascites fluids or tissue culture supernatant by affinity chromatography (protein A/G)
Suggested Dilutions	WB 1:4000 IHC 1:150 IF 1:100

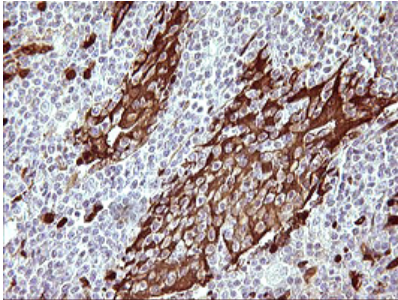
Anti-IDO1 Mouse Monoclonal Antibody [Clone ID: OTI2B5] (M01705-3) Images



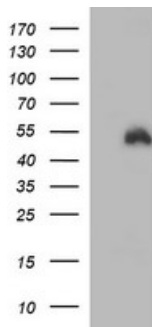
Anti-IDO1 mouse monoclonal antibody (M01705-3) immunofluorescent staining of COS7 cells transiently transfected by pCMV6-ENTRY IDO1.



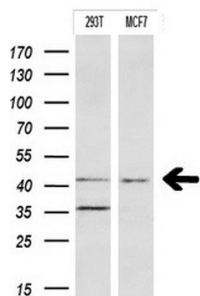
Immunohistochemical staining of paraffin-embedded Human pancreas tissue within the normal limits using anti-IDO1 mouse monoclonal antibody. (Heat-induced epitope retrieval by 10mM citric buffer)



Immunohistochemical staining of paraffin-embedded Human lymphoma tissue using anti-IDO1 mouse monoclonal antibody. (Heat-induced epitope retrieval by 10mM citric buffer)



HEK293T cells were transfected with the pCMV6-ENTRY control (Left lane) or pCMV6-ENTRY IDO1 (Right lane) cDNA for 48 hrs and lysed. Equivalent amounts of cell lysates (5 ug per lane) were separated by SDS-PAGE and immunoblotted with anti-IDO1.



Western blot analysis of extracts (10ug) from 2 different cell lines by using anti-IDO1 monoclonal antibody at 1:200.

Submit a product review to Biocompare.com

Submit a review of this product to Biocompare.com to receive a \$20 Amazon.com giftcard! Your reviews help your fellow scientists make the right decisions. Thank you for your contribution.



Anti-IDO1 Mouse Monoclonal Antibody [Clone ID: OT12B5]

For Research Use Only. Not for use in diagnostic procedures.