

## Anti-KHDRBS1 Antibody (Center)

Catalog Number: M01717

### About KHDRBS1

Recruited and tyrosine phosphorylated by several receptor systems, for example the T-cell, leptin and insulin receptors. Once phosphorylated, functions as an adapter protein in signal transduction cascades by binding to SH2 and SH3 domain-containing proteins. Role in G2-M progression in the cell cycle. Represses CBP-dependent transcriptional activation apparently by competing with other nuclear factors for binding to CBP. Also acts as a putative regulator of mRNA stability and/or translation rates and mediates mRNA nuclear export. Positively regulates the association of constitutive transport element (CTE)-containing mRNA with large polyribosomes and translation initiation. According to some authors, is not involved in the nucleocytoplasmic export of unspliced (CTE)-containing RNA species according to (PubMed:[22253824](#)).

### Overview

Product Name	Anti-KHDRBS1 Antibody (Center)
Reactive Species	Human, Mouse
Description	Boster Bio Anti-KHDRBS1 Antibody (Center) (Catalog # M01717). Tested in WB, IHC-P application(s). This antibody reacts with Human, Mouse.
Application	IHC-P, WB
Clonality	Polyclonal
Formulation	Purified polyclonal antibody supplied in PBS with 0.09% (W/V) sodium azide.
Storage Instructions	Maintain refrigerated at 2-8°C for up to 2 weeks. For long-term storage, store at -20°C in small aliquots to prevent freeze-thaw cycles.
Host	Rabbit
Uniprot ID	Q07666

### Technical Details

Immunogen	This KHDRBS1 antibody is generated from a rabbit immunized with a KLH conjugated synthetic peptide between 259-291 amino acids from the Central region of human KHDRBS1.
Predicted Reactive Species	Mouse
Isotype	Rabbit IgG
Purification	This antibody is purified through a protein A column, followed by peptide affinity purification.
Suggested Dilutions	Dilute the sample so that the expected range of concentrations fall within the detection range of this kit. If the expected range of concentration is unknown, a pilot test should be conducted to decide the optimal dilution ratio for your samples.

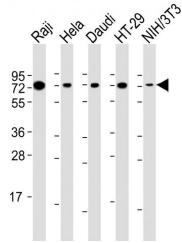
Some PubMed article(s) citing the expression level of this target are as follows:

Boster Bio's internal QC testing used:

WB: 1:2000

IHC-P: 1:25

## Anti-KHDRBS1 Antibody (Center) (M01717) Images



All lanes : Anti-KHDRBS1 Antibody (Center) at 1:2000 dilution

Lane 1: Raji whole cell lysate

Lane 2: Hela whole cell lysate

Lane 3: Daudi whole cell lysate

Lane 4: HT-29 whole cell lysate

Lane 5: NIH/3T3 whole cell lysate

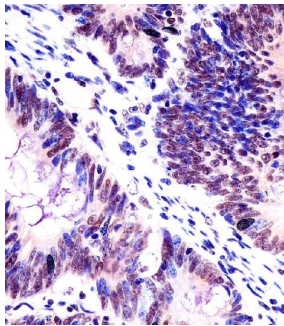
Lysates/proteins at 20 µg per lane.

Secondary

Goat Anti-Rabbit IgG, (H+L), Peroxidase conjugated at 1/10000 dilution.

Predicted band size : 48 kDa

Blocking/Dilution buffer: 5% NFDM/TBST.



M01717 staining KHDRBS1 in human colorectal carcinoma tissue sections by Immunohistochemistry (IHC-P -paraformaldehyde-fixed, paraffin-embedded sections). Tissue was fixed with formaldehyde and blocked with 3% BSA for 0.5 hour at room temperature; antigen retrieval was by heat mediation with a citrate buffer (pH6). Samples were incubated with primary antibody (1/25) for 1 hour at 37°C. A undiluted biotinylated goat polyvalent antibody was used as the secondary antibody.

## Submit a product review to Biocompare.com

Submit a review of this product to Biocompare.com to receive a \$20 Amazon.com giftcard! Your reviews help your fellow scientists make the right decisions. Thank you for your contribution.



Anti-KHDRBS1 Antibody (Center)