

Anti-PAK4 Mouse Monoclonal Antibody [Clone ID: OTI1C7]

Catalog Number: M01723

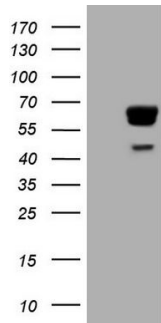
Overview

Product Name	Anti-PAK4 Mouse Monoclonal Antibody [Clone ID: OTI1C7]
Reactive Species	Human, Mouse, Rat
Description	Boster Bio PAK4 mouse monoclonal antibody, clone OTI1C7 (formerly 1C7). Catalog# M01723. Tested in IHC, WB. This antibody reacts with Human, Mouse, Rat.
Application	IHC, WB
Clonality	Monoclonal OTI1C7
Formulation	PBS (pH 7.3) containing 1% stabilizing protein, 50% glycerol and 0.02% sodium azide. This antibody is supplied in a stabilized formulation. Compatibility with conjugation reactions depends on the chemistry of the conjugation method used. For conjugation methods that are not compatible with the stabilizing components present in this formulation, a carrier-free antibody format is required.
Storage Instructions	Store at -20°C as received.
Host	Mouse
Uniprot ID	O96013

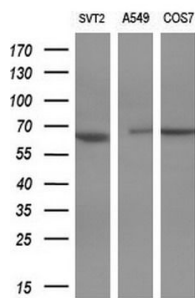
Technical Details

Immunogen	Human recombinant protein fragment corresponding to amino acids 1-308 of human PAK4 (NP_005875) produced in E.coli.
Isotype	IgG1
Concentration	1 mg/ml
Purification	Purified from mouse ascites fluids or tissue culture supernatant by affinity chromatography (protein A/G)
Suggested Dilutions	WB 1:2000 IHC 1:150

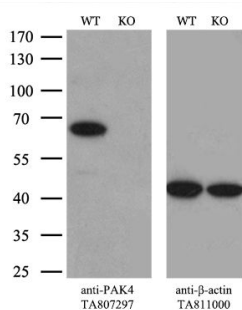
Anti-PAK4 Mouse Monoclonal Antibody [Clone ID: OTI1C7] (M01723) Images



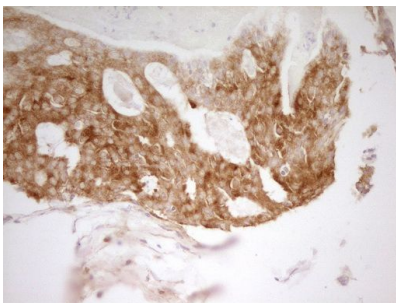
HEK293T cells were transfected with the pCMV6-ENTRY control (Left lane) or pCMV6-ENTRY PAK4 (Right lane) cDNA for 48 hrs and lysed. Equivalent amounts of cell lysates (5 ug per lane) were separated by SDS-PAGE and immunoblotted with anti-PAK4 (Cat# M01723).



Western blot analysis of extracts (10ug) from 3 different cell lines by using anti-PAK4 monoclonal antibody (1:1000).

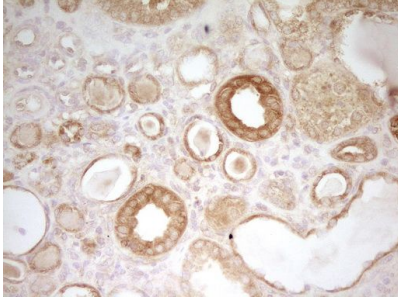
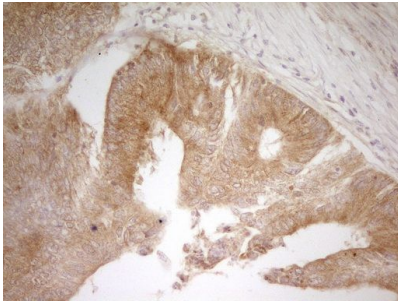


Equivalent amounts of cell lysates (10 ug per lane) of wild-type 293T cells (WT) and PAK4-Knockout 293T cells (KO) were separated by SDS-PAGE and immunoblotted with anti-PAK4 monoclonal antibody M01723, (1:500). Then the blotted membrane was stripped and reprobed with anti-actin antibody as a loading control.

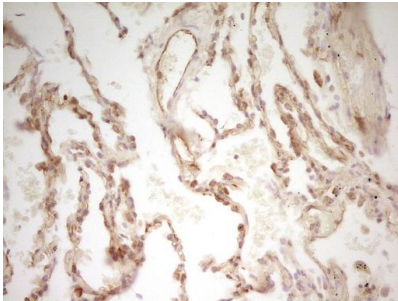


Immunohistochemical staining of paraffinembedded Adenocarcinoma of Human breast tissue using anti-PAK4 mouse monoclonal antibody. (Heat-induced epitope retrieval by 1mM EDTA in 10mM Tris, pH8.5, 120°C for 3min, M01723)

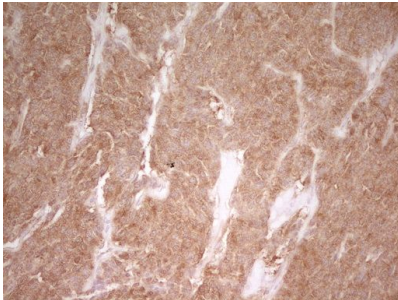
Immunohistochemical staining of paraffinembedded Adenocarcinoma of Human colon tissue using anti-PAK4 mouse monoclonal antibody. (Heat-induced epitope retrieval by 1mM EDTA in 10mM Tris, pH8.5, 120°C for 3min, M01723)



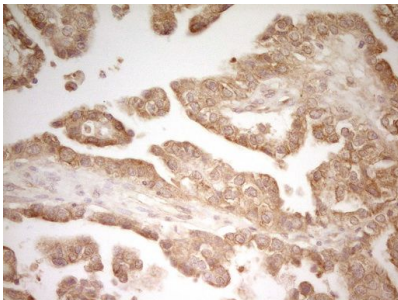
Immunohistochemical staining of paraffinembedded Human Kidney tissue within the normal limits using anti-PAK4 mouse monoclonal antibody. (Heat-induced epitope retrieval by 1mM EDTA in 10mM Tris, pH8.5, 120°C for 3min, M01723)



Immunohistochemical staining of paraffinembedded Human lung tissue within the normal limits using anti-PAK4 mouse monoclonal antibody. (Heat-induced epitope retrieval by 1mM EDTA in 10mM Tris, pH8.5, 120°C for 3min, M01723)

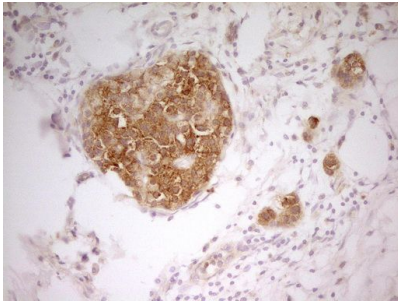


Immunohistochemical staining of paraffinembedded Carcinoma of Human lung tissue using anti-PAK4 mouse monoclonal antibody. (Heat-induced epitope retrieval by 1mM EDTA in 10mM Tris, pH8.5, 120°C for 3min, M01723)

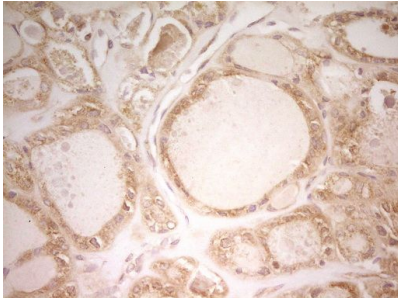


Immunohistochemical staining of paraffinembedded Adenocarcinoma of Human ovary tissue using anti-PAK4 mouse monoclonal antibody. (Heat-induced epitope retrieval by 1mM EDTA in 10mM Tris, pH8.5, 120°C for 3min, M01723)

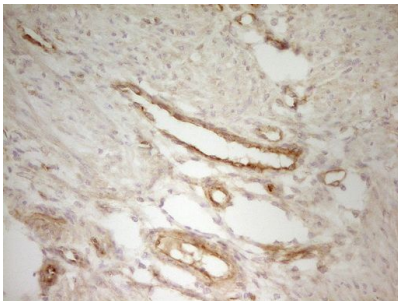
Immunohistochemical staining of paraffinembedded Carcinoma of Human pancreas tissue using anti-PAK4 mouse monoclonal antibody. (Heat-induced epitope retrieval by



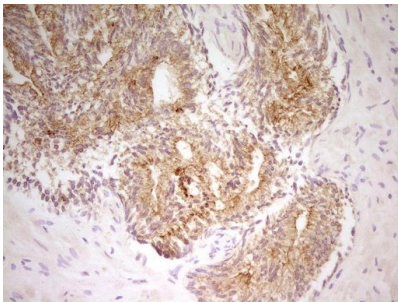
1mM EDTA in 10mM Tris, pH8.5, 120°C for 3min, M01723)



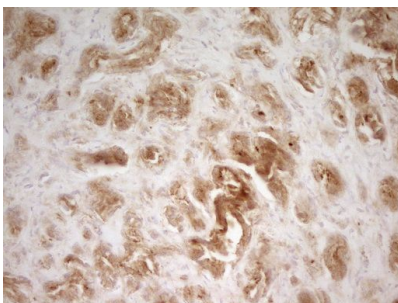
Immunohistochemical staining of paraffinembedded Carcinoma of Human thyroid tissue using anti-PAK4 mouse monoclonal antibody. (Heat-induced epitope retrieval by 1mM EDTA in 10mM Tris, pH8.5, 120°C for 3min, M01723)



Immunohistochemical staining of paraffinembedded Human endometrium tissue within the normal limits using anti-PAK4 mouse monoclonal antibody. (Heat-induced epitope retrieval by 1mM EDTA in 10mM Tris, pH8.5, 120°C for 3min, M01723)



Immunohistochemical staining of paraffinembedded Human prostate tissue within the normal limits using anti-PAK4 mouse monoclonal antibody. (Heat-induced epitope retrieval by 1mM EDTA in 10mM Tris, pH8.5, 120°C for 3min, M01723)



Immunohistochemical staining of paraffinembedded Carcinoma of Human prostate tissue using anti-PAK4 mouse monoclonal antibody. (Heat-induced epitope retrieval by 1mM EDTA in 10mM Tris, pH8.5, 120°C for 3min)

Immunohistochemical staining of paraffinembedded Carcinoma of Human prostate tissue using anti-PAK4 mouse monoclonal antibody. (Heat-induced epitope retrieval by



1mM EDTA in 10mM Tris, pH8.5, 120°C for 3min, M01723)

Submit a product review to Biocompare.com

Submit a review of this product to Biocompare.com to receive a \$20 Amazon.com giftcard! Your reviews help your fellow scientists make the right decisions. Thank you for your contribution.



Anti-PAK4 Mouse Monoclonal Antibody [Clone ID: OT11C7]

For Research Use Only. Not for use in diagnostic procedures.