

## Anti-MEK4 (MAP2K4) Mouse Monoclonal Antibody [Clone ID: OT18A8]

Catalog Number: M01725-2

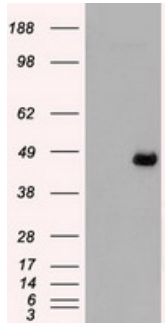
### Overview

Product Name	Anti-MEK4 (MAP2K4) Mouse Monoclonal Antibody [Clone ID: OT18A8]
Reactive Species	Dog, Human, Mouse, Rat
Description	Boster Bio Anti-MAP2K4 (MEK4) mouse monoclonal antibody, clone OT18A8 (formerly 8A8). Catalog# M01725-2. Tested in FC, IF, IHC, IP, WB. This antibody reacts with Human, Mouse, Rat, Dog.
Application	Flow Cytometry, IP, IF, IHC, WB
Clonality	Monoclonal OT18A8
Formulation	PBS (pH 7.3) containing 1% stabilizing protein, 50% glycerol and 0.02% sodium azide. This antibody is supplied in a stabilized formulation. Compatibility with conjugation reactions depends on the chemistry of the conjugation method used. For conjugation methods that are not compatible with the stabilizing components present in this formulation, a carrier-free antibody format is required.
Storage Instructions	Store at -20°C as received.
Host	Mouse
Uniprot ID	P45985

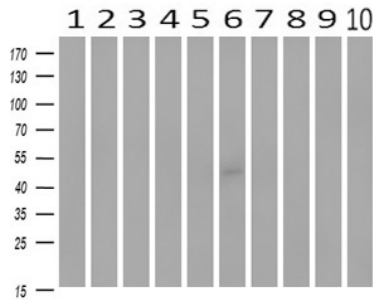
### Technical Details

Immunogen	Full-length protein expressed in 293T cell transfected with human MAP2K4 expression vector
Isotype	IgG2b
Concentration	2.36 mg/ml
Purification	Purified from mouse ascites fluids or tissue culture supernatant by affinity chromatography (protein A/G)
Suggested Dilutions	WB 1:500~1000 IHC 1:150 IF 1:50~100 Flow Cytometry 1:100 IP 2ug/500ul

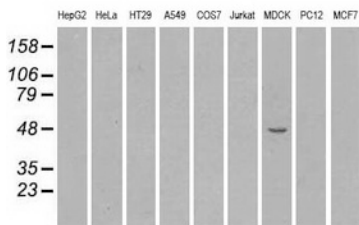
## Anti-MEK4 (MAP2K4) Mouse Monoclonal Antibody [Clone ID: OTI8A8] (M01725-2) Images



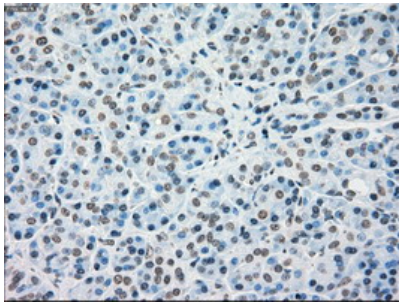
HEK293T cells were transfected with the pCMV6-ENTRY control (Left lane) or pCMV6-ENTRY MAP2K4 (Right lane) cDNA for 48 hrs and lysed. Equivalent amounts of cell lysates (5 ug per lane) were separated by SDS-PAGE and immunoblotted with anti-MAP2K4.



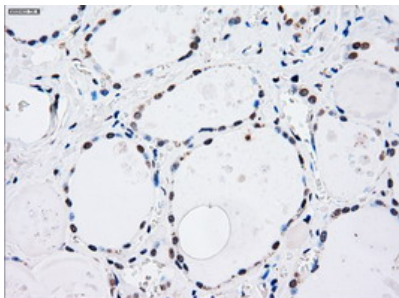
Western blot analysis of extracts (10ug) from 10 Human tissue by using anti-MAP2K4 monoclonal antibody at 1:500 (1: Testis; 2: Omentum; 3: Uterus; 4: Breast; 5: Brain; 6: Liver; 7: Ovary; 8: Thyroid gland; 9: colon;10: spleen).



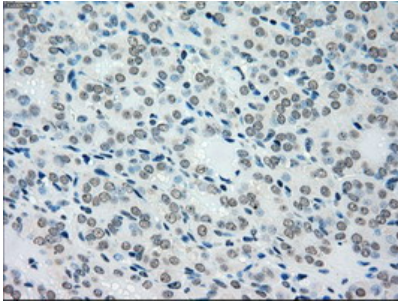
Western blot analysis of extracts (35ug) from 9 different cell lines by using anti-MAP2K4 monoclonal antibody.



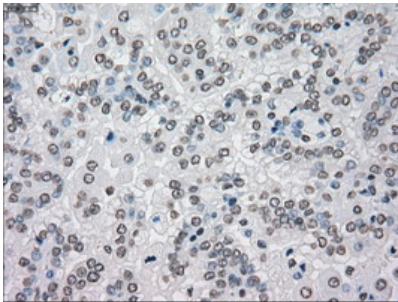
Immunohistochemical staining of paraffin-embedded Human pancreas tissue within the normal limits using anti-MAP2K4 mouse monoclonal antibody. (Heat-induced epitope retrieval by 10mM citric buffer)



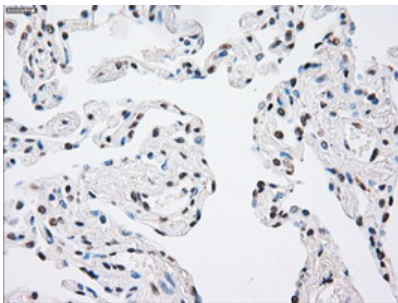
Immunohistochemical staining of paraffin-embedded Human thyroid tissue within the normal limits using anti-MAP2K4 mouse monoclonal antibody. (Heat-induced epitope retrieval by 10mM citric buffer)



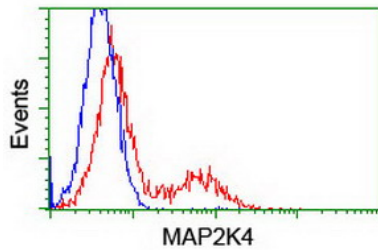
Immunohistochemical staining of paraffin-embedded Carcinoma of Human thyroid tissue using anti-MAP2K4 mouse monoclonal antibody. (Heat-induced epitope retrieval by 10mM citric buffer)



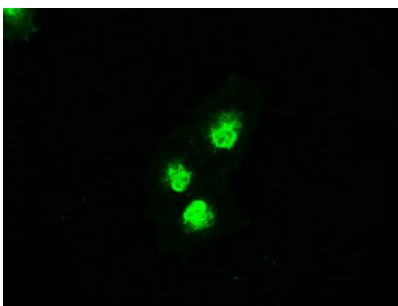
Immunohistochemical staining of paraffin-embedded Carcinoma of Human kidney tissue using anti-MAP2K4 mouse monoclonal antibody. (Heat-induced epitope retrieval by 10mM citric buffer)



Immunohistochemical staining of paraffin-embedded Human lung tissue within the normal limits using anti-MAP2K4 mouse monoclonal antibody. (Heat-induced epitope retrieval by 10mM citric buffer)

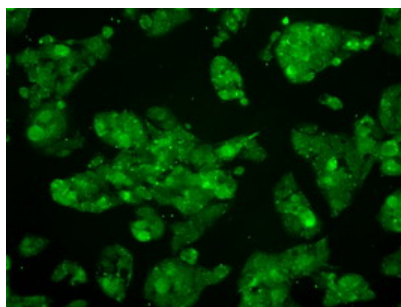


HEK293T cells transfected with either MAP2K4 (Myc-DDK-tagged) overexpress plasmid (Red) or empty vector control plasmid (Blue) were immunostained by anti-MAP2K4 antibody (M01725-2)



Anti-MAP2K4 mouse monoclonal antibody (M01725-2) immunofluorescent staining of COS7 cells transiently transfected by pCMV6-ENTRY MAP2K4.

Immunofluorescent staining of HepG2 cells using anti-MAP2K4 mouse monoclonal antibody (M01725-2).



## Submit a product review to Biocompare.com

Submit a review of this product to Biocompare.com to receive a \$20 Amazon.com giftcard! Your reviews help your fellow scientists make the right decisions. Thank you for your contribution.



Anti-MEK4 (MAP2K4) Mouse Monoclonal Antibody [Clone ID: OT18A8]

For Research Use Only. Not for use in diagnostic procedures.