

Anti-MYPT1 Rabbit Monoclonal Antibody

Catalog Number: M01743-1

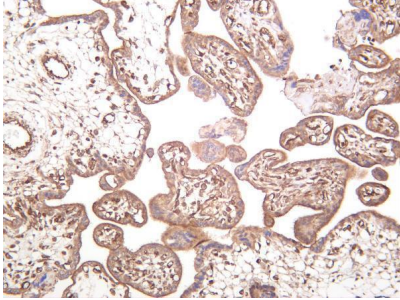
Overview

Product Name	Anti-MYPT1 Rabbit Monoclonal Antibody
Reactive Species	Human
Description	This Recombinant Rabbit Monoclonal Antibody detects endogenous levels of MYPT1 protein. Validated for research with WB,IHC,IF,IP,ELISA applications. Anti MYPT1 is reactive for Human samples
Application	ELISA, IP, IF, IHC, WB
Clonality	Monoclonal
Formulation	PBS, 50% glycerol, 0.05% Proclin 300, 0.05% stabilizing protein This antibody is supplied in a stabilized formulation. Compatibility with conjugation reactions depends on the chemistry of the conjugation method used. For conjugation methods that are not compatible with the stabilizing components present in this formulation, a carrier-free antibody format is required.
Storage Instructions	Store at -20°C/1 year
Host	Rabbit
Uniprot ID	O14974

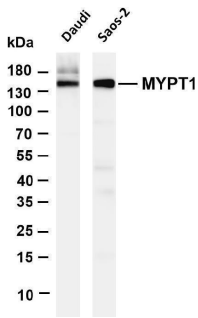
Technical Details

Isotype	IgG, Kappa
Purification	Protein A
Suggested Dilutions	IHC 1:200-1:1000 WB 1:2000-1:10000 IF 1:200-1:1000 ELISA 1:5000-1:20000 IP 1:50-1:200

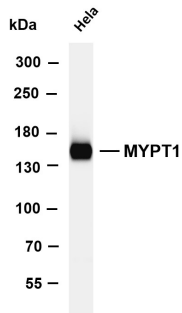
Anti-MYPT1 Rabbit Monoclonal Antibody (M01743-1) Images



Human placenta was stained with anti-MYPT1 rabbit antibody



Various whole cell lysates were separated by 4-20% SDS-PAGE, and the membrane was blotted with anti-MYPT1 antibody. The HRP-conjugated Goat anti-Rabbit IgG(H + L) antibody was used to detect the antibody. Lane 1: Daudi Lane 2: Saos-2 Predicted band size: 140kDa Observed band size: 140kDa



Various whole cell lysates were separated by 4-8% SDS-PAGE, and the membrane was blotted with anti-MYPT1 antibody. The HRP-conjugated Goat anti-Rabbit IgG(H + L) antibody was used to detect the antibody. Lane 1: HeLa Predicted band size: 140kDa Observed band size: 140kDa

Submit a product review to [Biocompare.com](https://www.biocompare.com)

Submit a review of this product to [Biocompare.com](https://www.biocompare.com) to receive a \$20 Amazon.com giftcard! Your reviews help your fellow scientists make the right decisions. Thank you for your contribution.



Anti-MYPT1 Rabbit Monoclonal Antibody

For Research Use Only. Not for use in diagnostic procedures.