

## Anti-Eg5 KIF11 Monoclonal Antibody

Catalog Number: M01754-2

### About KIF11

Indoleamine 2, 3-dioxygenase1 (IDO1) is a 41-42 kD intracellular enzyme that catabolizes tryptophan into kynurenine. IDO1 modulates levels of the amino acid tryptophan, which is vital for cell growth, but is also involved in the suppression of the immune response. IDO1 effects on immune suppression are due to decreased tryptophan availability and the generation of tryptophan metabolites, resulting in negative effects on T lymphocytes, including proliferation, function and survival. IDO1 may be involved in the suppression of the immune response to tumors, and blocking the IDO1 pathway may be a potential target for immuno and cancer therapy. IDO1 is expressed in a wide variety of tissues and can be upregulated by interferon gamma and other inflammatory cytokines.

### Overview

Product Name	Anti-Eg5 KIF11 Monoclonal Antibody
Reactive Species	Bovine, Canine, Human, Mouse, Rat, Swine
Description	Boster Bio Anti-Eg5 KIF11 Monoclonal Antibody catalog # M01754-2. Tested in IF, WB applications. This antibody reacts with Bovine, Canine, Human, Mouse, Rat, Swine.
Application	IF, WB
Clonality	Monoclonal 5H4
Formulation	Purified mouse monoclonal in buffer containing 0.1M Tris-Glycine (pH 7.4, 150 mM NaCl) with 0.2% sodium azide, 50% glycerol.
Storage Instructions	Store at -20°C for one year. For short term storage and frequent use, store at 4°C for up to one month. Avoid repeated freeze-thaw cycles.
Host	Mouse
Uniprot ID	P52732

### Technical Details

Immunogen	Purified recombinant human Eg5 protein fragments expressed in E.coli.
Predicted Reactive Species	Chimpanzee
Isotype	IgG
Form	Liquid
Concentration	1 mg/ml
Purification	Affinity purification

**Suggested Dilutions**

Dilute the sample so that the expected range of concentrations fall within the detection range of this kit.

If the expected range of concentration is unknown, a pilot test should be conducted to decide the optimal dilution ratio for your samples.

Some PubMed article(s) citing the expression level of this target are as follows:

Boster Bio's internal QC testing used:

WB 1:1000-1:2000

IF 1:100-1:500

## Anti-Eg5 KIF11 Monoclonal Antibody (M01754-2) Images

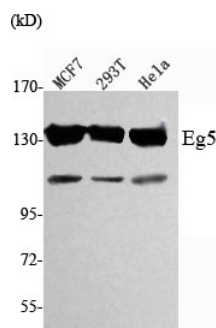


Figure 1. Western blotting validation for Anti-Eg5 KIF11 Monoclonal Antibody M01754-2

Western Blot (WB) analysis using Eg5 Monoclonal Antibody against MCF7

### Submit a product review to Biocompare.com

Submit a review of this product to Biocompare.com to receive a \$20 Amazon.com giftcard! Your reviews help your fellow scientists make the right decisions. Thank you for your contribution.



Anti-Eg5 KIF11 Monoclonal Antibody