

## Anti-Apg3 (ATG3) Mouse Monoclonal Antibody [Clone ID: OTI2C12]

Catalog Number: M01768-1

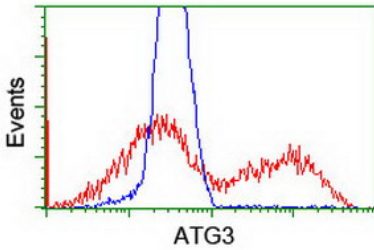
### Overview

Product Name	Anti-Apg3 (ATG3) Mouse Monoclonal Antibody [Clone ID: OTI2C12]
Reactive Species	Human, Mouse, Rat
Description	Boster Bio ATG3 mouse monoclonal antibody, clone OTI2C12 (formerly 2C12). Catalog# M01768-1. Tested in FC, IF, IHC, WB. This antibody reacts with Human, Mouse, Rat.
Conjugate	Unconjugated
Application	Flow Cytometry, IF, IHC, WB
Clonality	Monoclonal OTI2C12
Formulation	PBS (pH 7.3) containing 1% stabilizing protein, 50% glycerol and 0.02% sodium azide. This antibody is supplied in a stabilized formulation. Compatibility with conjugation reactions depends on the chemistry of the conjugation method used. For conjugation methods that are not compatible with the stabilizing components present in this formulation, a carrier-free antibody format is required.
Storage Instructions	Store at -20°C for one year. For short term storage and frequent use, store at 4°C for up to one month. Avoid repeated freeze-thaw cycles.
Host	Mouse
Uniprot ID	Q9NT62

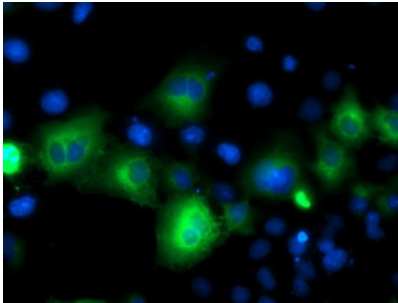
### Technical Details

Immunogen	Full length human recombinant protein of human ATG3 (NP_057393) produced in HEK293 cell.
Isotype	IgG1
Concentration	0.39 mg/ml
Purification	Purified from mouse ascites fluids or tissue culture supernatant by affinity chromatography (protein A/G)
Suggested Dilutions	WB: 1:2000 IHC: 1:150 IF: 1:50~100 Flow cytometry: 1:100

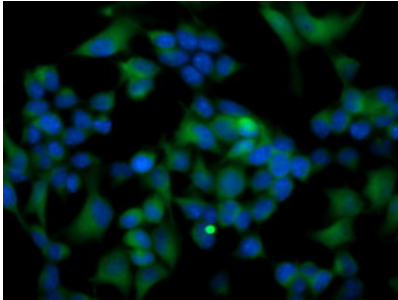
## Anti-Apg3 (ATG3) Mouse Monoclonal Antibody [Clone ID: OTI2C12] (M01768-1) Images



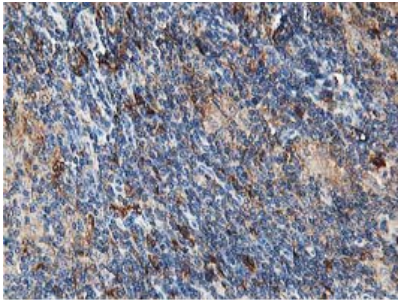
HEK293T cells transfected with either ATG3 (Myc-DDK-tagged) overexpress plasmid (Red) or empty vector control plasmid (Blue) were immunostained by anti-ATG3 antibody (M01768-1)



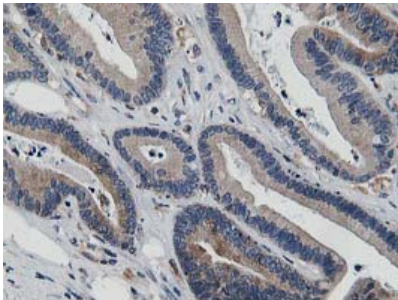
Anti-ATG3 mouse monoclonal antibody (M01768-1) immunofluorescent staining of COS7 cells transiently transfected by pCMV6-ENTRY ATG3.



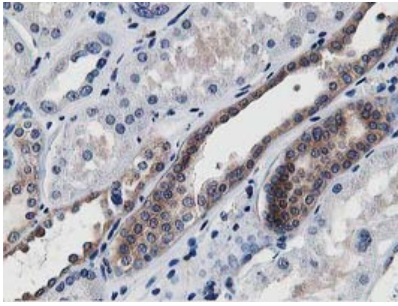
Immunofluorescent staining of HeLa cells using anti-ATG3 mouse monoclonal antibody (M01768-1).



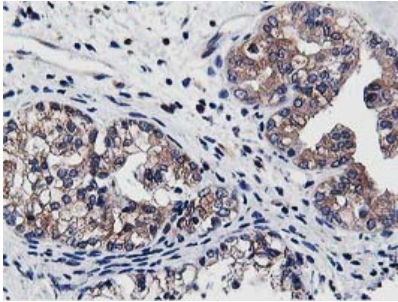
Immunohistochemical staining of paraffin-embedded Human lymphoma tissue using anti-ATG3 mouse monoclonal antibody. (Heat-induced epitope retrieval by 10mM citric buffer)



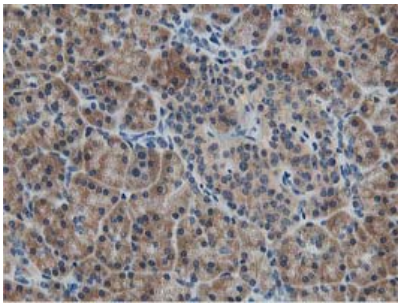
Immunohistochemical staining of paraffin-embedded Adenocarcinoma of Human colon tissue using anti-ATG3 mouse monoclonal antibody. (Heat-induced epitope retrieval by 10mM citric buffer)



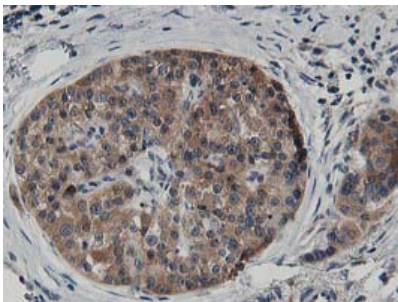
Immunohistochemical staining of paraffin-embedded Human Kidney tissue within the normal limits using anti-ATG3 mouse monoclonal antibody. (Heat-induced epitope retrieval by 10mM citric buffer)



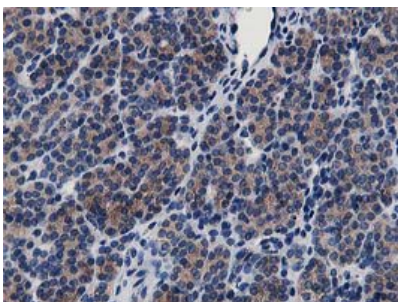
Immunohistochemical staining of paraffin-embedded Adenocarcinoma of Human ovary tissue using anti-ATG3 mouse monoclonal antibody. (Heat-induced epitope retrieval by 10mM citric buffer)



Immunohistochemical staining of paraffin-embedded Human pancreas tissue within the normal limits using anti-ATG3 mouse monoclonal antibody. (Heat-induced epitope retrieval by 10mM citric buffer)

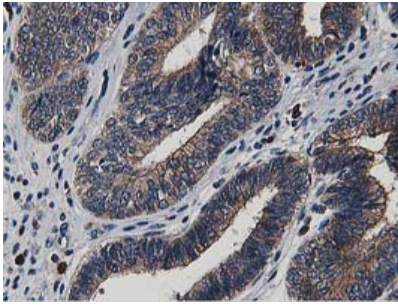


Immunohistochemical staining of paraffin-embedded Carcinoma of Human pancreas tissue using anti-ATG3 mouse monoclonal antibody. (Heat-induced epitope retrieval by 10mM citric buffer)

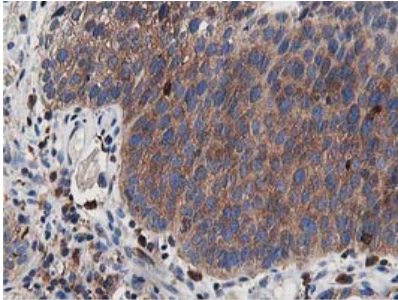


Immunohistochemical staining of paraffin-embedded Carcinoma of Human thyroid tissue using anti-ATG3 mouse monoclonal antibody. (Heat-induced epitope retrieval by 10mM citric buffer)

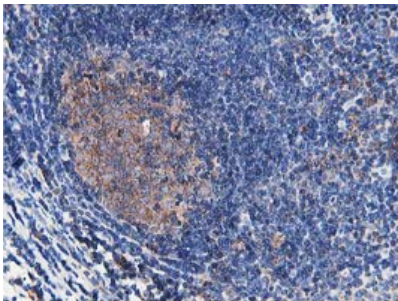
Immunohistochemical staining of paraffin-embedded Adenocarcinoma of Human endometrium tissue using anti-ATG3 mouse monoclonal antibody. (Heat-induced epitope retrieval by 10mM citric buffer)



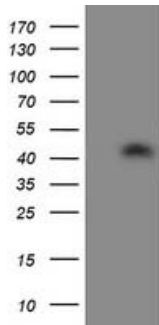
retrieval by 10mM citric buffer



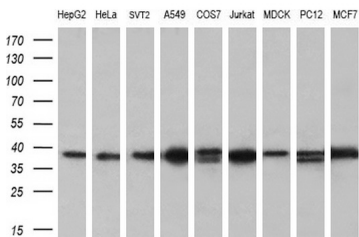
Immunohistochemical staining of paraffin-embedded Carcinoma of Human bladder tissue using anti-ATG3 mouse monoclonal antibody. (Heat-induced epitope retrieval by 10mM citric buffer)



Immunohistochemical staining of paraffin-embedded Human lymph node tissue within the normal limits using anti-ATG3 mouse monoclonal antibody. (Heat-induced epitope retrieval by 10mM citric buffer)



HEK293T cells were transfected with the pCMV6-ENTRY control (Left lane) or pCMV6-ENTRY ATG3 (Right lane) cDNA for 48 hrs and lysed. Equivalent amounts of cell lysates (5 ug per lane) were separated by SDS-PAGE and immunoblotted with anti-ATG3.



Western blot analysis of extracts (35ug) from 9 different cell lines by using anti-ATG3 monoclonal antibody (HepG2: human; HeLa: human; SVT2: mouse; A549: human; COS7: monkey; Jurkat: human; MDCK: canine; PC12: rat; MCF7: human) (1:200).

Submit a product review to [Biocompare.com](https://www.biocompare.com)

Submit a review of this product to [Biocompare.com](https://www.biocompare.com) to receive a \$20 Amazon.com giftcard! Your



reviews help your fellow scientists make the right decisions. Thank you for your contribution.

Anti-Apg3 (ATG3) Mouse Monoclonal Antibody [Clone ID: OTI2C12]

For Research Use Only. Not for use in diagnostic procedures.