

## Anti-Apg3 (ATG3) Mouse Monoclonal Antibody [Clone ID: OTI3H2]

Catalog Number: M01768-2

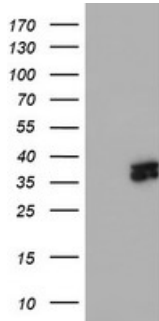
### Overview

Product Name	Anti-Apg3 (ATG3) Mouse Monoclonal Antibody [Clone ID: OTI3H2]
Reactive Species	Dog, Human, Monkey, Mouse, Rat
Description	Boster Bio ATG3 mouse monoclonal antibody, clone OTI3H2 (formerly 3H2). Catalog# M01768-2. Tested in FC, IF, IHC, WB. This antibody reacts with Human, Monkey, Mouse, Rat, Dog.
Application	Flow Cytometry, IF, IHC, WB
Clonality	Monoclonal OTI3H2
Formulation	PBS (PH 7.3) containing 1% BSA, 50% glycerol and 0.02% sodium azide.
Storage Instructions	Store at -20°C as received.
Host	Mouse
Uniprot ID	Q9NT62

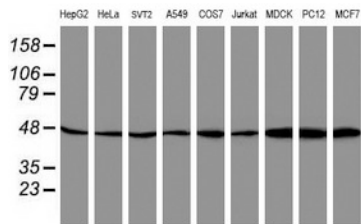
### Technical Details

Immunogen	Full length human recombinant protein of <a href="#">human ATG3</a> (NP_071933) produced in HEK293T cell.
Isotype	IgG2a
Concentration	1 mg/ml
Purification	Purified from mouse ascites fluids or tissue culture supernatant by affinity chromatography (protein A/G)
Suggested Dilutions	Dilute the sample so that the expected range of concentrations fall within the detection range of this kit. If the expected range of concentration is unknown, a pilot test should be conducted to decide the optimal dilution ratio for your samples. Some PubMed article(s) citing the expression level of this target are as follows:

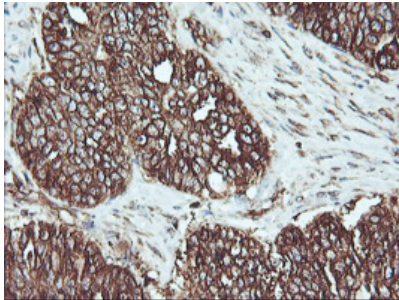
## Anti-Apg3 (ATG3) Mouse Monoclonal Antibody [Clone ID: OTI3H2] (M01768-2) Images



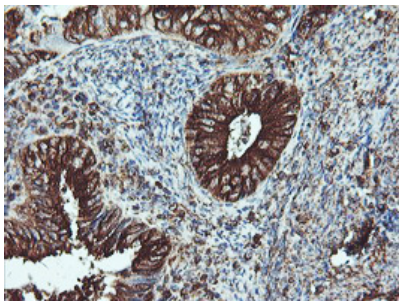
HEK293T cells were transfected with the pCMV6-ENTRY control (Left lane) or pCMV6-ENTRY ATG3 (Right lane) cDNA for 48 hrs and lysed. Equivalent amounts of cell lysates (5 ug per lane) were separated by SDS-PAGE and immunoblotted with anti-ATG3.



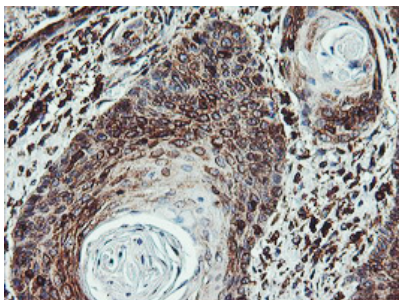
Western blot analysis of extracts (35ug) from 9 different cell lines by using anti-ATG3 monoclonal antibody (HepG2: human; HeLa: human; SVT2: mouse; A549: human; COS7: monkey; Jurkat: human; MDCK: canine; PC12: rat; MCF7: human).



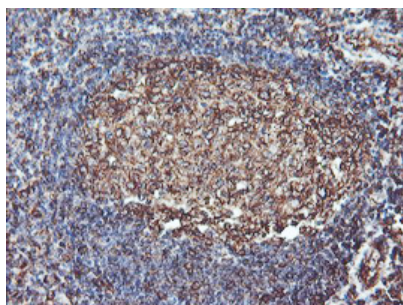
Immunohistochemical staining of paraffin-embedded Adenocarcinoma of Human ovary tissue using anti-ATG3 mouse monoclonal antibody. (Heat-induced epitope retrieval by 10mM citric buffer)



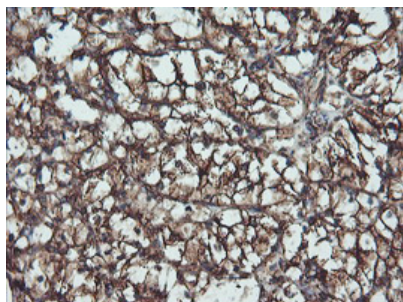
Immunohistochemical staining of paraffin-embedded Adenocarcinoma of Human endometrium tissue using anti-ATG3 mouse monoclonal antibody. (Heat-induced epitope retrieval by 10mM citric buffer)



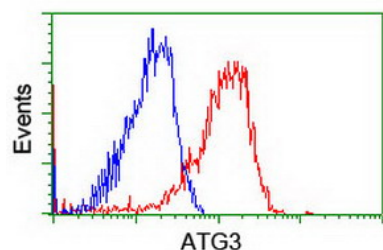
Immunohistochemical staining of paraffin-embedded Carcinoma of Human bladder tissue using anti-ATG3 mouse monoclonal antibody. (Heat-induced epitope retrieval by 10mM citric buffer)



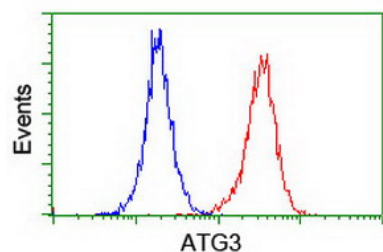
Immunohistochemical staining of paraffin-embedded Human tonsil within the normal limits using anti-ATG3 mouse monoclonal antibody. (Heat-induced epitope retrieval by 10mM citric buffer)



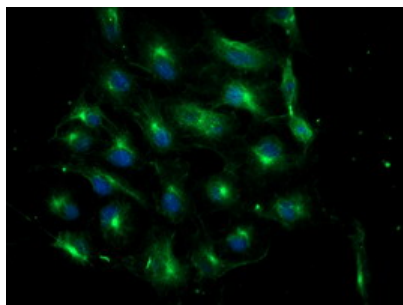
Immunohistochemical staining of paraffin-embedded Human Kidney tissue within the normal limits using anti-ATG3 mouse monoclonal antibody. (Heat-induced epitope retrieval by 10mM citric buffer)



Flow cytometric Analysis of Hela cells



Flow cytometric Analysis of Jurkat cells



Anti-ATG3 mouse monoclonal antibody (M01768-2) immunofluorescent staining of COS7 cells transiently transfected by pCMV6-ENTRY ATG3.

**Submit a product review to Biocompare.com**

Submit a review of this product to Biocompare.com to receive a \$20 Amazon.com giftcard! Your reviews help your fellow scientists make the right decisions. Thank you for your contribution.



**Anti-Apg3 (ATG3) Mouse Monoclonal Antibody [Clone ID: OT13H2]**