

## Anti-Thyroid Hormone Receptor alpha (THRA) Mouse Monoclonal Antibody [Clone ID: OTI2A2]

Catalog Number: M01775

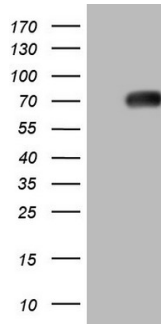
### Overview

Product Name	Anti-Thyroid Hormone Receptor alpha (THRA) Mouse Monoclonal Antibody [Clone ID: OTI2A2]
Reactive Species	Human, Mouse, Rat
Description	Boster Bio THRA mouse monoclonal antibody, clone OTI2A2 (formerly 2A2). Catalog# M01775. Tested in IHC, WB. This antibody reacts with Human, Mouse, Rat.
Application	IHC, WB
Clonality	Monoclonal OTI2A2
Formulation	PBS (pH 7.3) containing 1% stabilizing protein, 50% glycerol and 0.02% sodium azide. This antibody is supplied in a stabilized formulation. Compatibility with conjugation reactions depends on the chemistry of the conjugation method used. For conjugation methods that are not compatible with the stabilizing components present in this formulation, a carrier-free antibody format is required.
Storage Instructions	Store at -20°C as received.
Host	Mouse
Uniprot ID	P10827

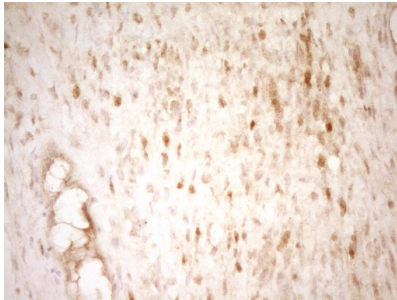
### Technical Details

Immunogen	Human recombinant protein fragment corresponding to amino acids 1-220 of human THRA (NP_955366) produced in E.coli.
Isotype	IgG1
Concentration	1 mg/ml
Purification	Purified from mouse ascites fluids or tissue culture supernatant by affinity chromatography (protein A/G)
Suggested Dilutions	WB 1:2000 IHC 1:150

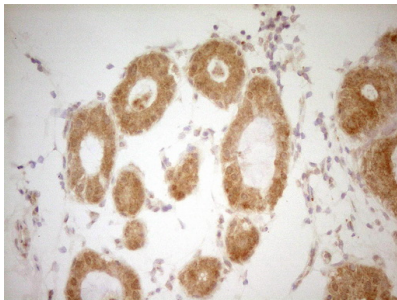
## Anti-Thyroid Hormone Receptor alpha (THRA) Mouse Monoclonal Antibody [Clone ID: OTI2A2] (M01775) Images



HEK293T cells were transfected with the pCMV6-ENTRY control (Left lane) or pCMV6-ENTRY THRA (Right lane) cDNA for 48 hrs and lysed. Equivalent amounts of cell lysates (5 ug per lane) were separated by SDS-PAGE and immunoblotted with anti-THRA.



Immunohistochemical staining of paraffin-embedded Human Ovary tissue within the normal limits using anti-THRA mouse monoclonal antibody. (Heat-induced epitope retrieval by 1 mM EDTA in 10mM Tris)



Immunohistochemical staining of paraffin-embedded Adenocarcinoma of Human breast tissue using anti-THRA mouse monoclonal antibody. (Heat-induced epitope retrieval by 1 mM EDTA in 10mM Tris)

### Submit a product review to [Biocompare.com](https://www.biocompare.com)

Submit a review of this product to [Biocompare.com](https://www.biocompare.com) to receive a \$20 Amazon.com giftcard! Your reviews help your fellow scientists make the right decisions. Thank you for your contribution.



Anti-Thyroid Hormone Receptor alpha (THRA) Mouse Monoclonal Antibody [Clone ID: OTI2A2]

For Research Use Only. Not for use in diagnostic procedures.