

Anti-HLA-DRB5 Mouse Monoclonal Antibody [Clone ID: OTI4G7]

Catalog Number: M01789

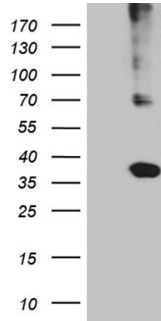
Overview

Product Name	Anti-HLA-DRB5 Mouse Monoclonal Antibody [Clone ID: OTI4G7]
Reactive Species	Human
Description	Boster Bio HLA mouse monoclonal antibody, clone OTI4G7. Catalog# M01789. Tested in IHC, WB. This antibody reacts with Human.
Application	IHC, WB
Clonality	Monoclonal OTI4G7
Formulation	PBS (pH 7.3) containing 1% stabilizing protein, 50% glycerol and 0.02% sodium azide. This antibody is supplied in a stabilized formulation. Compatibility with conjugation reactions depends on the chemistry of the conjugation method used. For conjugation methods that are not compatible with the stabilizing components present in this formulation, a carrier-free antibody format is required.
Storage Instructions	Store at -20°C as received.
Host	Mouse
Uniprot ID	Q30154

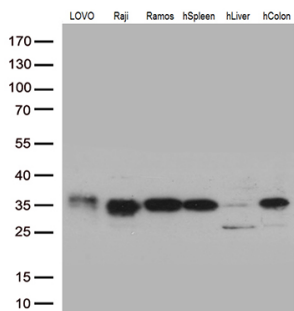
Technical Details

Immunogen	Human recombinant protein fragment corresponding to amino acids 30-266 of human HLA-DRB5 (NP_002116) produced in E.coli.
Isotype	IgG1
Concentration	1 mg/ml
Purification	Purified from mouse ascites fluids or tissue culture supernatant by affinity chromatography (protein A/G)
Suggested Dilutions	WB 1:500 IHC 1:150

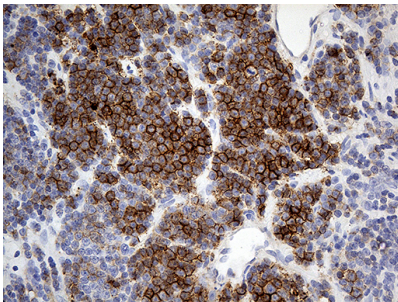
Anti-HLA-DRB5 Mouse Monoclonal Antibody [Clone ID: OTI4G7] (M01789) Images



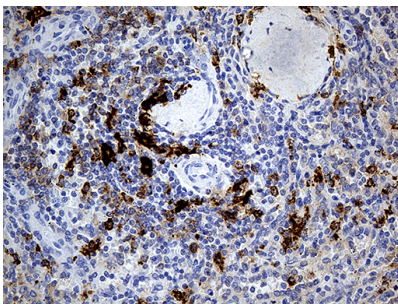
HEK293T cells were transfected with the pCMV6-ENTRY control (Left lane) or pCMV6-ENTRY HLA (Right lane) cDNA for 48 hrs and lysed. Equivalent amounts of cell lysates (5 ug per lane) were separated by SDS-PAGE and immunoblotted with anti-HLA. (1:5.



Western blot analysis of extracts (35ug) from 3 cell lines lysates and 3 tissue lysates by using anti-HLA monoclonal antibody (1:500).

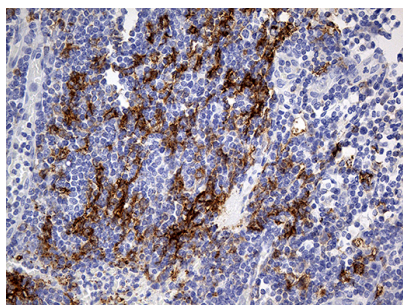


Immunohistochemical staining of paraffin-embedded Human lymphoma tissue using anti-HLA mouse monoclonal antibody. (Heat-induced epitope retrieval by 1mM EDTA in 10mM Tris buffer (pH8.5) at 120°C for 3min)



Immunohistochemical staining of paraffin-embedded Human spleen tissue within the normal limits using anti-HLA mouse monoclonal antibody. (Heat-induced epitope retrieval by 1mM EDTA in 10mM Tris buffer (pH8.5) at 120°C for 3min)

Immunohistochemical staining of paraffin-embedded Human appendix tissue within the normal limits using anti-HLA mouse monoclonal antibody. (Heat-induced epitope retrieval by 1mM EDTA in 10mM Tris buffer (pH8.5) at 120°C for 3min)



Submit a product review to Biocompare.com

Submit a review of this product to Biocompare.com to receive a \$20 Amazon.com giftcard! Your reviews help your fellow scientists make the right decisions. Thank you for your contribution.



Anti-HLA-DRB5 Mouse Monoclonal Antibody [Clone ID: OTI4G7]

For Research Use Only. Not for use in diagnostic procedures.