

Anti-TFE3 Monoclonal Antibody

Catalog Number: M01791

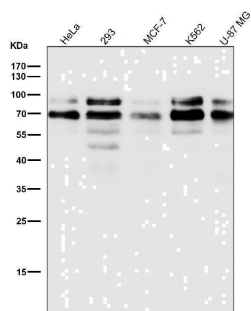
Overview

Product Name	Anti-TFE3 Monoclonal Antibody
Reactive Species	Human
Description	Boster Bio Anti-TFE3 Monoclonal Antibody catalog # M01791. Tested in IHC, ICC/IF, Flow Cytometry applications. This antibody reacts with Human.
Application	Flow Cytometry, IF, IHC, ICC
Clonality	Monoclonal AFHC-20
Formulation	Rabbit IgG in stabilizing components, phosphate buffered saline, pH 7.4, 150mM NaCl, 0.02% sodium azide and 50% glycerol. *This antibody is supplied in a stabilized formulation. Compatibility with conjugation reactions depends on the chemistry of the conjugation method used. For conjugation methods that are not compatible with the stabilizing components present in this formulation, a carrier-free antibody format is required.
Storage Instructions	Store at -20°C for one year. For short term storage and frequent use, store at 4°C for up to one month. Avoid repeated freeze-thaw cycles.
Host	Rabbit
Uniprot ID	P19532

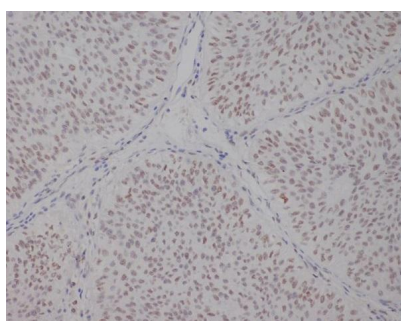
Technical Details

Immunogen	A synthesized peptide derived from human TFE3
Isotype	Rabbit IgG
Form	Liquid
Concentration	0.5mg/ml
Purification	Affinity-chromatography
Suggested Dilutions	IHC 1:50-1:200 ICC/IF 1:50-1:100 FC 1:50

Anti-TFE3 Monoclonal Antibody (M01791) Images



All lanes use the Antibody at 1:1K dilution for 1 hour at room temperature.



Immunohistochemical analysis of paraffin-embedded human bladder, using TFE3 Antibody.

Submit a product review to Biocompare.com

Submit a review of this product to Biocompare.com to receive a \$20 Amazon.com giftcard! Your reviews help your fellow scientists make the right decisions. Thank you for your contribution.



Anti-TFE3 Monoclonal Antibody

For Research Use Only. Not for use in diagnostic procedures.