

Anti-ATGL / PNPLA2 Rabbit Monoclonal Antibody

Catalog Number: M01800

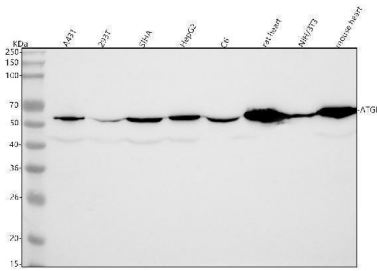
Overview

Product Name	Anti-ATGL / PNPLA2 Rabbit Monoclonal Antibody
Reactive Species	Human, Mouse, Rat
Description	Boster Bio Anti-ATGL / PNPLA2 Rabbit Monoclonal Antibody catalog # M01800. Tested in WB application. This antibody reacts with Human, Mouse, Rat.
Application	WB
Clonality	Monoclonal 23P38
Formulation	Rabbit IgG in stabilizing components, phosphate buffered saline, pH 7.4, 150mM NaCl, 0.02% sodium azide and 50% glycerol. *This antibody is supplied in a stabilized formulation. Compatibility with conjugation reactions depends on the chemistry of the conjugation method used. For conjugation methods that are not compatible with the stabilizing components present in this formulation, a carrier-free antibody format is required.
Storage Instructions	Store at -20°C for one year. For short term storage and frequent use, store at 4°C for up to one month. Avoid repeated freeze-thaw cycles.
Host	Rabbit
Uniprot ID	Q96AD5

Technical Details

Immunogen	A synthesized peptide derived from human ATGL / PNPLA2
Isotype	IgG
Form	Liquid
Concentration	0.5mg/ml
Purification	Affinity-chromatography
Suggested Dilutions	WB 1:500-2000

Anti-ATGL / PNPLA2 Rabbit Monoclonal Antibody (M01800) Images



Western blot analysis of ATGL/PNPLA2 using anti-ATGL/PNPLA2 antibody (M01800). Electrophoresis was performed on a 5-20% SDS-PAGE gel at 70V (Stacking gel) / 90V (Resolving gel) for 2-3 hours. The sample well of each lane was loaded with 30 ug of sample under reducing conditions. Lane 1: human A431 whole cell lysates, Lane 2: human 293T whole cell lysates, Lane 3: human SiHa whole cell lysates, Lane 4: human HepG2 whole cell lysates, Lane 5: rat C6 whole cell lysates, Lane 6: rat heart tissue lysates, Lane 7: mouse NIH/3T3 whole cell lysates, Lane 8: mouse heart tissue lysates. After electrophoresis, proteins were transferred to a nitrocellulose membrane at 150 mA for 50-90 minutes. Blocked the membrane with 5% non-fat milk/TBS for 1.5 hour at RT. The membrane was incubated with rabbit anti-ATGL/PNPLA2 antigen affinity purified monoclonal antibody (Catalog # M01800) at 1:500 overnight at 4°C, then washed with TBS-0.1%Tween 3 times with 5 minutes each and probed with a goat anti-rabbit IgG-HRP secondary antibody at a dilution of 1:1000 for 1.5 hour at RT. The signal is developed using an Enhanced Chemiluminescent detection (ECL) kit (Catalog # EK1002) with Tanon 5200 system. A specific band was detected for ATGL/PNPLA2 at approximately 55 kDa. The expected band size for ATGL/PNPLA2 is at 55 kDa.

Submit a product review to Biocompare.com

Submit a review of this product to Biocompare.com to receive a \$20 Amazon.com giftcard! Your reviews help your fellow scientists make the right decisions. Thank you for your contribution.



Anti-ATGL / PNPLA2 Rabbit Monoclonal Antibody

For Research Use Only. Not for use in diagnostic procedures.