

Anti-Acetyl-CoA Carboxylase ACACA Rabbit Monoclonal Antibody, Clone#RM232

Catalog Number: M01802-1

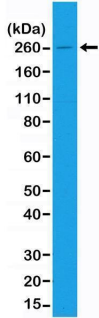
Overview

| | |
|----------------------|--|
| Product Name | Anti-Acetyl-CoA Carboxylase ACACA Rabbit Monoclonal Antibody, Clone#RM232 |
| Reactive Species | Human |
| Description | Boster Bio Anti-Acetyl-CoA Carboxylase ACACA Rabbit Monoclonal Antibody, Clone#RM232 (Catalog # M01802-1). Tested in IHC, WB applications. This antibody reacts with Human. |
| Application | IHC, WB |
| Clonality | Monoclonal RM232 |
| Formulation | 50% Glycerol/PBS with 1% stabilizing protein and 0.09% sodium azide This antibody is supplied in a stabilized formulation. Compatibility with conjugation reactions depends on the chemistry of the conjugation method used. For conjugation methods that are not compatible with the stabilizing components present in this formulation, a carrier-free antibody format is required. |
| Storage Instructions | Store at -20°C for one year. Avoid repeated freeze-thaw cycles. |
| Host | Rabbit |
| Uniprot ID | Q13085 |

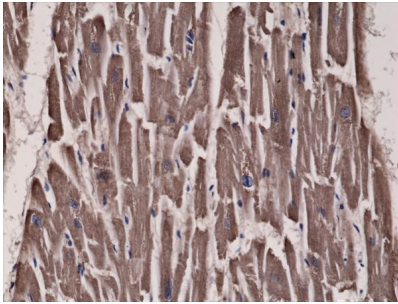
Technical Details

| | |
|----------------------------|--|
| Immunogen | A peptide corresponding to human Acetyl CoA Carboxylase 1. |
| Predicted Reactive Species | Mouse, Rat |
| Cross Reactivity | This antibody reacts to human Acetyl CoA Carboxylase 1. This antibody may also react to mouse or rat Acetyl CoA Carboxylase 1, as predicted by immunogen homology. |
| Isotype | Rabbit IgG |
| Form | Liquid |
| Concentration | 0.5-1mg/ml, actual concentration vary by lot. Use suggested dilution ratio to decide dilution procedure. |
| Purification | Protein A affinity purified from an animal origin-free culture supernatant |
| Suggested Dilutions | Immunohistochemistry (IHC): 1:300-1:500 dilution WB: 1:1000-1:2000 dilution. |

Anti-Acetyl-CoA Carboxylase ACACA Rabbit Monoclonal Antibody, Clone#RM232 (M01802-1) Images



Western Blotting result Western Blot of A431 cell lysates using Anti-Acetyl CoA Carboxylase 1 (RM232) at a 1:1,000 dilution, showed a band of Acetyl CoA Carboxylase 1 (~260 kDa) expressed in A431 cells.



IHC result Immunohistochemical staining of formalin fixed and paraffin embedded human heart tissue sections using Anti-Acetyl CoA Carboxylase 1 RM232 at a 1:300 dilution.

Submit a product review to Biocompare.com

Submit a review of this product to Biocompare.com to receive a \$20 Amazon.com giftcard! Your reviews help your fellow scientists make the right decisions. Thank you for your contribution.



Anti-Acetyl-CoA Carboxylase ACACA Rabbit Monoclonal Antibody, Clone#RM232

For Research Use Only. Not for use in diagnostic procedures.