

## Anti-IKBKE Mouse Monoclonal Antibody [Clone ID: OTI3C5]

Catalog Number: M01816-1

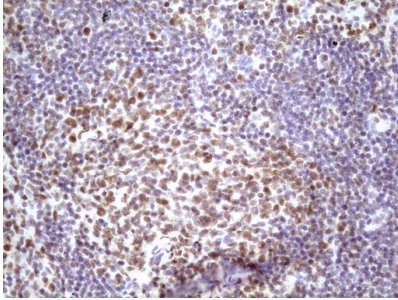
### Overview

Product Name	Anti-IKBKE Mouse Monoclonal Antibody [Clone ID: OTI3C5]
Reactive Species	Human
Description	Boster Bio IKBKE mouse monoclonal antibody, clone OTI3C5 (formerly 3C5). Catalog# M01816-1. Tested in IHC, WB. This antibody reacts with Human.
Conjugate	Unconjugated
Application	IHC, WB
Clonality	Monoclonal OTI3C5
Formulation	PBS (pH 7.3) containing 1% stabilizing protein, 50% glycerol and 0.02% sodium azide. This antibody is supplied in a stabilized formulation. Compatibility with conjugation reactions depends on the chemistry of the conjugation method used. For conjugation methods that are not compatible with the stabilizing components present in this formulation, a carrier-free antibody format is required.
Storage Instructions	Store at -20°C for one year. For short term storage and frequent use, store at 4°C for up to one month. Avoid repeated freeze-thaw cycles.
Host	Mouse
Uniprot ID	Q14164

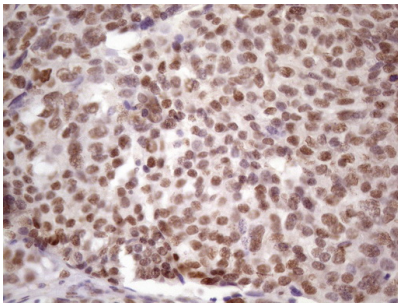
### Technical Details

Immunogen	Human recombinant protein fragment corresponding to amino acids 474-716 of human IKBKE (NP_054721) produced in E.coli.
Isotype	IgG1
Concentration	1 mg/ml
Purification	Purified from mouse ascites fluids or tissue culture supernatant by affinity chromatography (protein A/G)
Suggested Dilutions	WB 1:2000 IHC 1:150

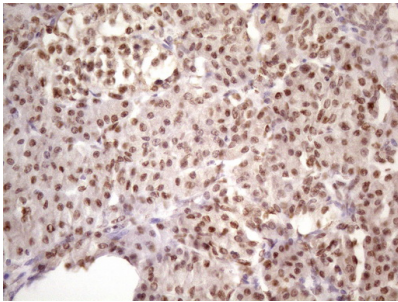
## Anti-IKBKE Mouse Monoclonal Antibody [Clone ID: OTI3C5] (M01816-1) Images



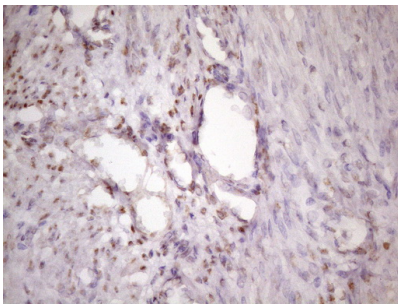
Immunohistochemical staining of paraffin-embedded Carcinoma of Human lung tissue using anti-IKBKE mouse monoclonal antibody. (Heat-induced epitope retrieval by 1 mM EDTA in 10mM Tris)



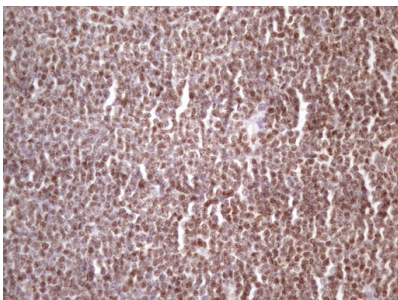
Immunohistochemical staining of paraffin-embedded Adenocarcinoma of Human ovary tissue using anti-IKBKE mouse monoclonal antibody. (Heat-induced epitope retrieval by 1 mM EDTA in 10mM Tris)



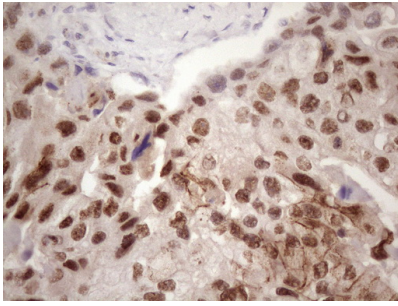
Immunohistochemical staining of paraffin-embedded Human pancreas tissue within the normal limits using anti-IKBKE mouse monoclonal antibody. (Heat-induced epitope retrieval by 1 mM EDTA in 10mM Tris)



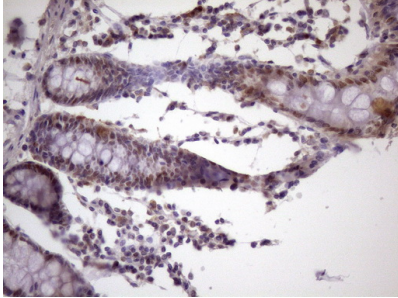
Immunohistochemical staining of paraffin-embedded Human endometrium tissue within the normal limits using anti-IKBKE mouse monoclonal antibody. (Heat-induced epitope retrieval by 1 mM EDTA in 10mM Tris)



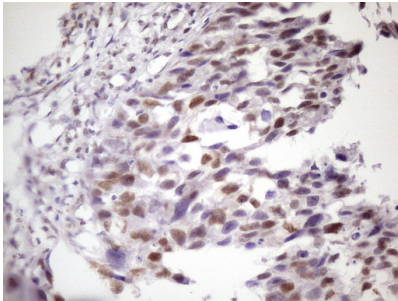
Immunohistochemical staining of paraffin-embedded Human lymphoma tissue using anti-IKBKE mouse monoclonal antibody. (Heat-induced epitope retrieval by 1 mM EDTA in 10mM Tris)



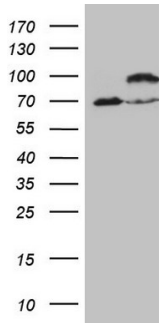
Immunohistochemical staining of paraffin-embedded Adenocarcinoma of Human breast tissue using anti-IKBKE mouse monoclonal antibody. (Heat-induced epitope retrieval by 1 mM EDTA in 10mM Tris)



Immunohistochemical staining of paraffin-embedded Human colon tissue within the normal limits using anti-IKBKE mouse monoclonal antibody. (Heat-induced epitope retrieval by 1 mM EDTA in 10mM Tris)



Immunohistochemical staining of paraffin-embedded Carcinoma of Human kidney tissue using anti-IKBKE mouse monoclonal antibody. (Heat-induced epitope retrieval by 1 mM EDTA in 10mM Tris)



HEK293T cells were transfected with the pCMV6-ENTRY control (Left lane) or pCMV6-ENTRY IKBKE (Right lane) cDNA for 48 hrs and lysed. Equivalent amounts of cell lysates (5 ug per lane) were separated by SDS-PAGE and immunoblotted with anti-IKBKE (1:2000).

## Submit a product review to [Biocompare.com](https://www.biocompare.com)

Submit a review of this product to [Biocompare.com](https://www.biocompare.com) to receive a \$20 Amazon.com giftcard! Your reviews help your fellow scientists make the right decisions. Thank you for your contribution.



Anti-IKBKE Mouse Monoclonal Antibody [Clone ID: OTI3C5]

For Research Use Only. Not for use in diagnostic procedures.